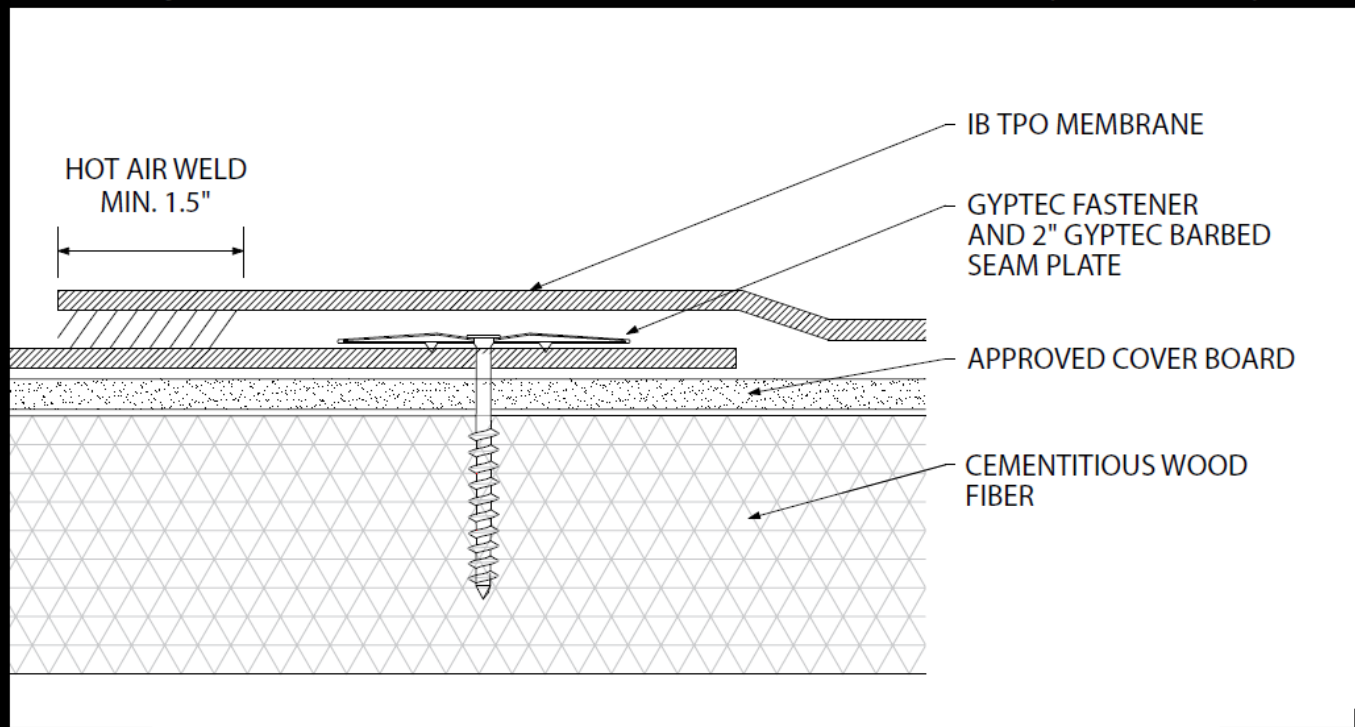


Mechanically Attached TPO Membrane - Cover Board - Cementitious Wood Fiber (New or Tear Off)



Deck Type	Cover Board			IB Membrane Securement*	
	Type ^{1,2}	Attachment	Fastener/Plate	Fastener/Plate**	Attachment***
Cementitious Wood Fiber	Approved Cover Board	1 per 6.4 sq. ft. (5 per 4' x 8')	GypTec or Deklite, 3" Insulation Plate	GypTec or DekLite, 2" Barbed Seam Plate	In-Seam @ 6" oc. x 66" max width
Cementitious Wood Fiber	Approved Cover Board	1 per 6.4 sq. ft. (5 per 4' x 8')	GypTec or Deklite, 3 Insulation Plate	GypTec or DekLite, 2" Barbed Seam Plate	In-Seam @ 6" oc. x 54" max width

¹Approved Cover Board: DensDeck, DensDeck Prime, DensDeck StormX Prime, Securock Ultralight Glass-Mat, Securock Ultralight Coated Glass-Mat, Securock Gypsum Fiber Board, DEXcell Glass-Mat Roof Board, or DEXcell FA Glass Mat Roof Board, minimum 1/4" thickness; or minimum 7/16" DEXcell Cement Roof Board; or minimum 1/2" IB HD ISO-J, or 1/2" IB Recovery Energy Board III-J.
²The use of some IB Approved Cover Boards may not achieve UL Classification.
 System Uplift Note(s): *Refer to applicable Approval Guide for System Code and/or FM Approvals Information.
 Refer to Substrate Resistance Table for required pull-out values. *Contact IB Technical Services for maximum sheet width allowed relative to in-seam fastening pattern.

For additional information about IB Roof Systems requirements, recommendations, installation details, approvals, and limitations for the above assemblies, please refer to the latest edition of the IB Roof Systems Specifications Manual. For Technical Services please contact IB Technical Department at 800-426-1626.

Membranes:		Membrane Color:			Warranty Length**				Warranty Type**	
IB TPO SM 60 Mil		White*	Gray	Tan	10 Year	15 Year	20 Year		Contractor Warranty Only	
IB TPO SM 80 Mil		White*	Gray	Tan	15 Year	20 Year	25 Year		Total Systems - No Dollar Limit (TSW)	
IB TPO FB 115 Mil		White*			10 Year	15 Year	20 Year		Warranty Plus (WP)	
IB TPO FB 135 Mil		White*			15 Year	20 Year	25 Year		Commercial Limited Material Warranty (CLMW) Residential Limited Material Warranty (RLMW)	

*Meets CRRC, Title 24, LEED (SRI)
 **Refer to Warranty Selection Guide for Warranty Riders, Term Length Limitations, and eligibility requirements of the IB Warranty Program.

Submitted By:		Project Name:	
Company Name:		Address:	
Email/Phone:		City/State:	