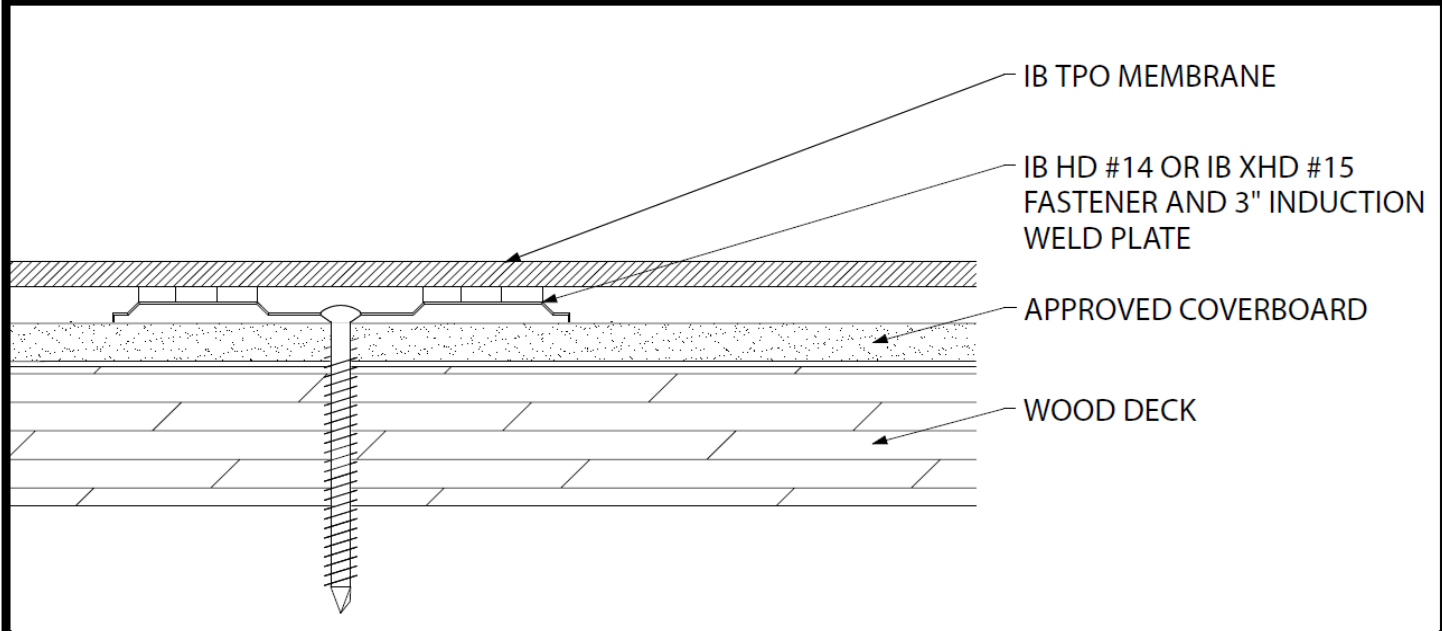




Induction Welded TPO Membrane - Cover Board - Wood Deck (New or Tear-Off)



Deck Type	Cover Board Type ^{1,2}	Insulation Securement			IB Membrane Securement** Attachment***
		Insulation Attachment	TPO Induction Plate	Density	
Min. 7/16" OSB	Approved Cover Board	IB HD #14 or XHD #15 Roofing Fastener	Rhinobond TPO Plate, Trufast TPO IW Plate, or isoweld TPO Plate	1 per 4 sq. ft. (8 per 4' x 8')	Plate bonded
Min. 7/16" OSB	Approved Cover Board	IB HD #14 or XHD #15 Roofing Fastener	Rhinobond TPO Plate, Trufast TPO IW Plate, or isoweld TPO Plate	1 per 2.67 sq. ft. (12 per 4' x 8')	Plate bonded
Min. 15/32" Plywood	Approved Cover Board	IB HD #14 or XHD #15 Roofing Fastener	Rhinobond TPO Plate	1 per 4 sq. ft. (8 per 4' x 8')	Plate bonded
Min. 15/32" Plywood	Approved Cover Board	IB HD #14 or XHD #15 Roofing Fastener	Rhinobond TPO Plate, Trufast TPO IW Plate, or isoweld TPO Plate	1 per 2.67 sq. ft. (12 per 4' x 8')	Plate bonded
Min. 19/32" Plywood	Approved Cover Board	IB HD #14 or XHD #15 Roofing Fastener	Rhinobond TPO Plate, Trufast TPO IW Plate, or isoweld TPO Plate	1 per 5.33 sq. ft. (6 per 4' x 8')	Plate bonded
Min. 19/32" Plywood	Approved Cover Board	IB HD #14 or XHD #15 Roofing Fastener	Rhinobond TPO Plate	1 per 5.33 sq. ft. (6 per 4' x 8')	Plate bonded

¹Approved Cover Board: DensDeck, DensDeck Prime, DensDeck StormX Prime, Securock Ultralight Glass-Mat, Securock Ultralight Coated Glass-Mat, Securock Gypsum Fiber Board, DEXcell Glass-Mat Roof Board, or DEXcell FA Glass Mat Roof Board, minimum 1/4" thickness; or minimum 7/16" DEXcell Cement Roof Board; or minimum 1/2" IB HD ISO-J, or 1/2" IB Recovery Energy Board III-J.

²The use of some IB Approved Cover Boards may not achieve UL Classification.

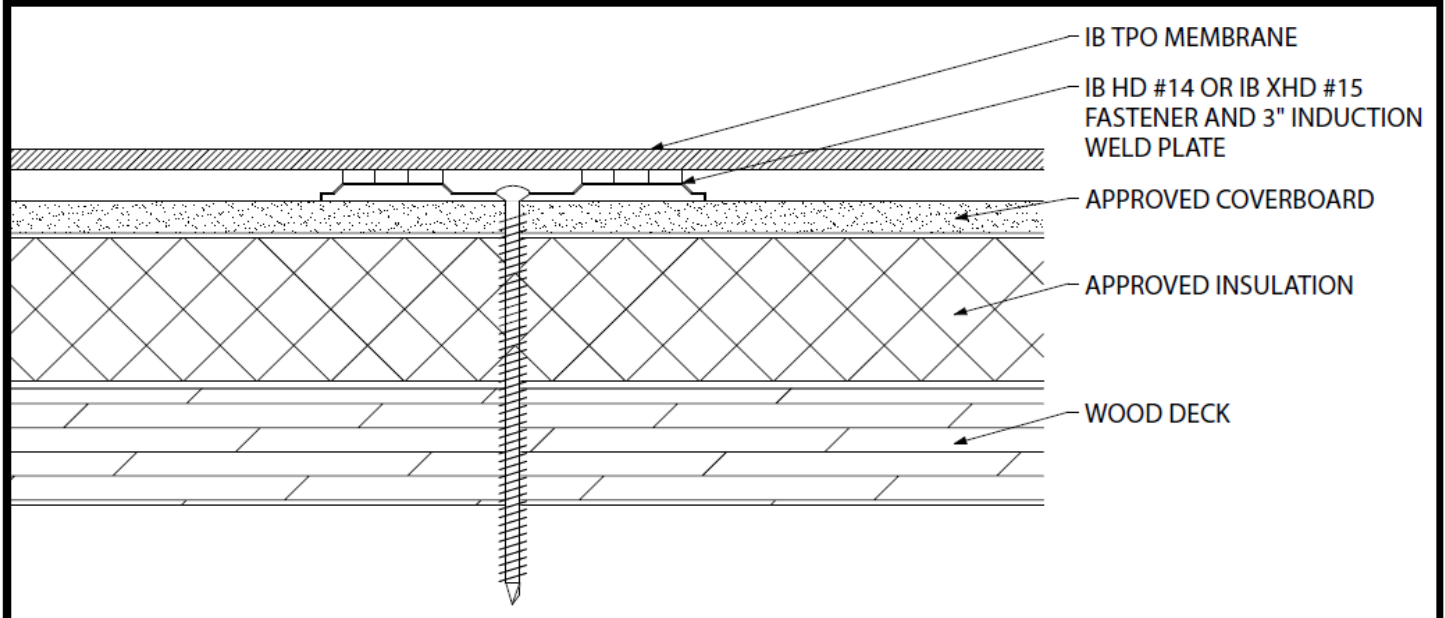
System Uplift Note(s): **Refer to applicable Approval Guide for System Code and/or FM Approvals Information. ***Refer to Substrate Resistance Table for required pull-out values.

For additional information about IB Roof Systems requirements, recommendations, installation details, approvals, and limitations for the above assemblies, please refer to the latest edition of the IB Roof Systems Specifications Manual. For Technical Services please contact IB Technical Department at 800-426-1626.

Membranes:		Membrane Color:			Warranty Length**			Warranty Type**	
IB TPO SM 60 Mil	White*	Gray	Tan	10 Year	15 Year	20 Year	Contractor Warranty Only		
IB TPO SM 80 Mil	White*	Gray	Tan	15 Year	20 Year	25 Year	Total Systems - No Dollar Limit (TSW)		
¹ Meets CRRC, Title 24, LEED (SRI)					² Refer to Warranty Selection Guide for Warranty Riders, Term Length Limitations, and eligibility requirements of the IB Warranty Program			Warranty Plus (WP)	
								Commercial Limited Material Warranty (CLMW)	
								Residential Limited Material Warranty (RLMW)	

Submitted By:	Project Name:
Company Name:	Address:
Email/Phone:	City/State:

Induction Welded TPO Membrane - Cover Board - Insulation - Wood Deck (New or Tear-Off)



Deck Type	Insulation/Cover Board Type ^{1,2}	Insulation Securement			IB Membrane Securement ^{**}
		Insulation Attachment	TPO Induction Plate	Density	
Min. 7/16" OSB	Approved Cover Board & Approved Insulation	IB HD #14 or XHD #15 Roofing Fastener	Rhinobond TPO Plate, Trufast TPO IW Plate, or isoweld TPO Plate	1 per 4 sq. ft. (8 per 4' x 8')	Plate bonded
Min. 7/16" OSB	Approved Cover Board & Approved Insulation	IB HD #14 or XHD #15 Roofing Fastener	Rhinobond TPO Plate, Trufast TPO IW Plate, or isoweld TPO Plate	1 per 2.67 sq. ft. (12 per 4' x 8')	Plate bonded
Min. 15/32" Plywood	Approved Cover Board & Approved Insulation	IB HD #14 or XHD #15 Roofing Fastener	Rhinobond TPO Plate	1 per 4 sq. ft. (8 per 4' x 8')	Plate bonded
Min. 15/32" Plywood	Approved Cover Board & Approved Insulation	IB HD #14 or XHD #15 Roofing Fastener	Rhinobond TPO Plate, Trufast TPO IW Plate, or isoweld TPO Plate	1 per 2.67 sq. ft. (12 per 4' x 8')	Plate bonded
Min. 19/32" Plywood	Approved Cover Board & Approved Insulation	IB HD #14 or XHD #15 Roofing Fastener	Rhinobond TPO Plate, Trufast TPO IW Plate, or isoweld TPO Plate	1 per 5.33 sq. ft. (6 per 4' x 8')	Plate bonded
Min. 19/32" Plywood	Approved Cover Board & Approved Insulation	IB HD #14 or XHD #15 Roofing Fastener	Rhinobond TPO Plate	1 per 5.33 sq. ft. (6 per 4' x 8')	Plate bonded

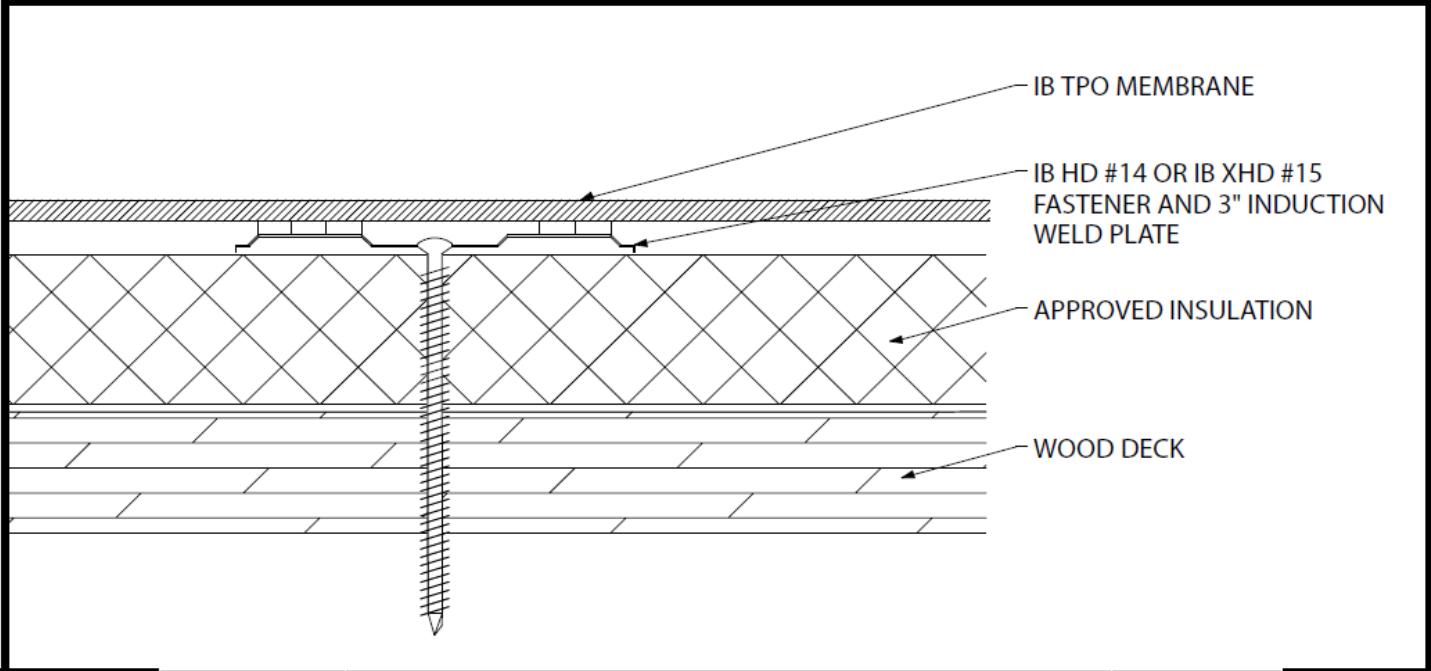
¹Approved Insulation: IB Energy Board II or III, or IB Approved UL Classified Polyisocyanurate, IB Approved UL Classified Expanded Polystyrene, IB Approved UL Classified Extruded Polystyrene Insulation
²Approved Cover Board: DensDeck, DensDeck Prime, DensDeck StormX Prime, Securock Ultralight Glass-Mat, Securock Ultralight Coated Glass-Mat, Securock Gypsum Fiber Board, DEXcell Glass-Mat Roof Board, or DEXcell FA Glass Mat Roof Board, minimum 1/4" thickness; or minimum 7/16" DEXcell Cement Roof Board; or minimum 1/2" IB HD ISO-J, or 1/2" IB Recovery Energy Board III-J.
³The use of some IB Approved Insulations/Cover Boards and or combinations thereof may not achieve UL Classification.
System Uplift Note(s): *Refer to applicable Approval Guide for System Code and/or FM Approvals Information. **Refer to Substrate Resistance Table for required pull-out values.
For additional information about IB Roof Systems requirements, recommendations, installation details, approvals, and limitations for the above assemblies, please refer to the latest edition of the IB Roof Systems Specifications Manual. For Technical Services please contact IB Technical Department at 800-426-1626.

Membranes:		Membrane Color:			Warranty Length ^{**}			Warranty Type ^{**}	
IB TPO SM 60 Mil	White*	Gray	Tan	10 Year	15 Year	20 Year	Contractor Warranty Only		
IB TPO SM 80 Mil	White*	Gray	Tan	15 Year	20 Year	25 Year	Total Systems - No Dollar Limit (TSW)		
*Meets CRRC, Title 24, LEED (SRI) **Refer to Warranty Selection Guide for Warranty Riders, Term Length Limitations, and eligibility requirements of the IB Warranty Program.							Warranty Plus (WP)		
							Commercial Limited Material Warranty (CLMW)		
							Residential Limited Material Warranty (RLMW)		

Submitted By:		Project Name:	
Company Name:		Address:	
Email/Phone:		City/State:	



Induction Welded TPO Membrane - Insulation - Wood Deck (New or Tear-Off)



Deck Type	Insulation Type ^{1,2}	Insulation Securement			IB Membrane Securement**
		Insulation Attachment	TPO Induction Plate	Density	
Min. 7/16" OSB	Approved Insulation	IB HD #14 or XHD #15 Roofing Fastener	Rhinobond TPO Plate, Trufast TPO IW Plate, or isoweld TPO Plate	1 per 4 sq. ft. (8 per 4' x 8')	Plate bonded
Min. 7/16" OSB	Approved Insulation	IB HD #14 or XHD #15 Roofing Fastener	Rhinobond TPO Plate, Trufast TPO IW Plate, or isoweld TPO Plate	1 per 2.67 sq. ft. (12 per 4' x 8')	Plate bonded
Min. 15/32" Plywood	Approved Insulation	IB HD #14 or XHD #15 Roofing Fastener	Rhinobond TPO Plate	1 per 4 sq. ft. (8 per 4' x 8')	Plate bonded
Min. 15/32" Plywood	Approved Insulation	IB HD #14 or XHD #15 Roofing Fastener	Rhinobond TPO Plate, Trufast TPO IW Plate, or isoweld TPO Plate	1 per 2.67 sq. ft. (12 per 4' x 8')	Plate bonded
Min. 19/32" Plywood	Approved Insulation	IB XHD #15 Roofing Fastener	Rhinobond TPO Plate, Trufast TPO IW Plate, or isoweld TPO Plate	1 per 5.33 sq. ft. (6 per 4' x 8')	Plate bonded
Min. 19/32" Plywood	Approved Insulation	IB HD #14 or XHD #15 Roofing Fastener	Rhinobond TPO Plate	1 per 5.33 sq. ft. (6 per 4' x 8')	Plate bonded

¹Approved Insulation: IB Energy Board II or III, or IB Approved UL Classified Polyisocyanurate
²The use of some IB Approved Insulations may not achieve UL Classification.

System Uplift Note(s): **Refer to applicable Approval Guide for System Code and/or FM Approvals Information. ***Refer to Substrate Resistance Table for required pull-out values.

For additional information about IB Roof Systems requirements, recommendations, installation details, approvals, and limitations for the above assemblies, please refer to the latest edition of the IB Roof Systems Specifications Manual. For Technical Services please contact IB Technical Department at 800-426-1626.

Membranes:		Membrane Color:			Warranty Length**			Warranty Type**	
IB TPO SM 60 Mil		White*	Gray	Tan	10 Year	15 Year	20 Year	Contractor Warranty Only	
IB TPO SM 80 Mil		White*	Gray	Tan	15 Year	20 Year	25 Year	Total Systems - No Dollar Limit (TSW)	
*Meets CRRC, Title 24, LEED (SRI)					**Refer to Warranty Selection Guide for Warranty Riders, Term Length Limitations, and eligibility requirements of the IB Warranty Program			Warranty Plus (WP)	
								Commercial Limited Material Warranty (CLMW)	
								Residential Limited Material Warranty (RLMW)	
Submitted By:				Project Name:					
Company Name:				Address:					
Email/Phone:				City/State:					