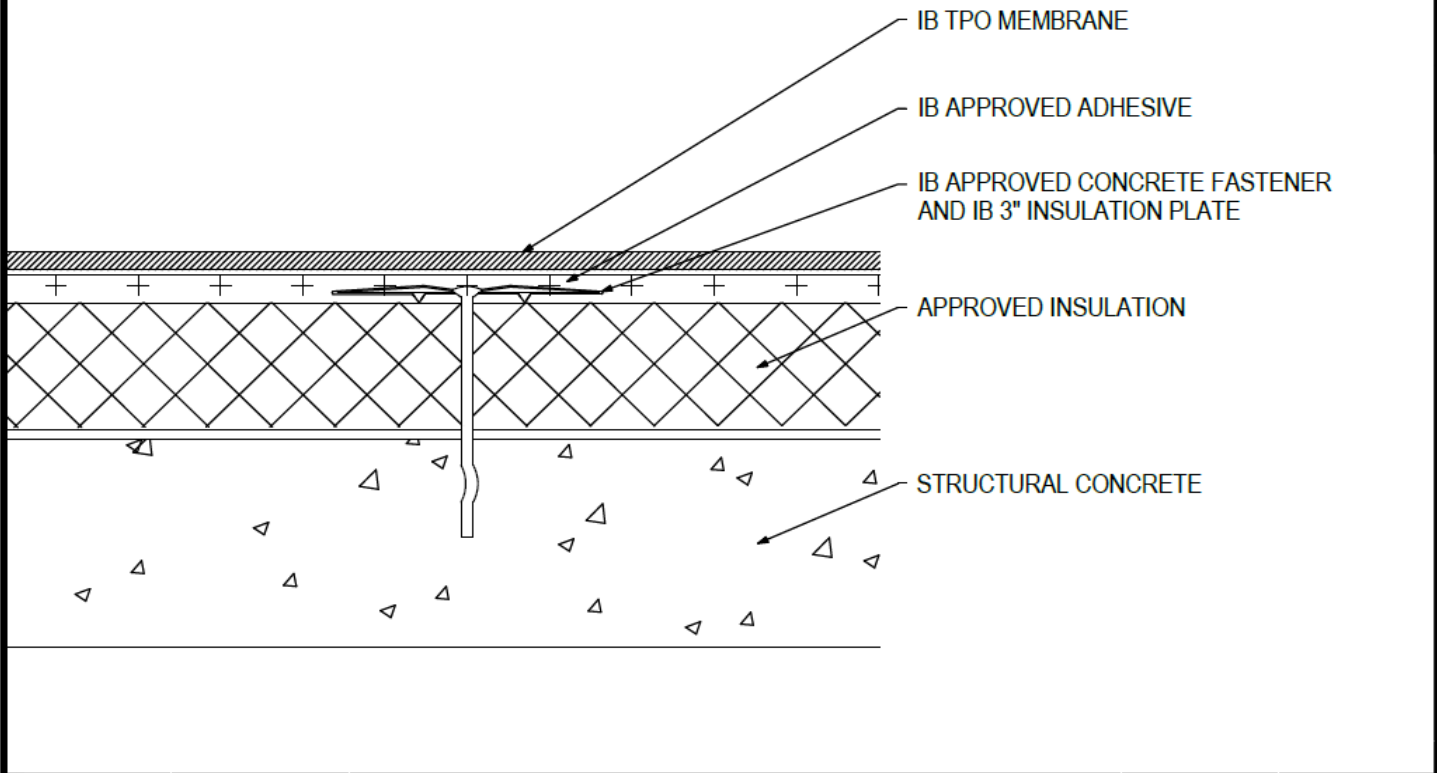


Adhered TPO Membrane - Insulation (MA) - Concrete Deck (New or Tear-Off)



Deck Type	Insulation			IB Membrane Securement**
	Type ^{1,2}	Attachment	Fastener/Plate***	Attachment ³
Structural Concrete	Approved Insulation	8 per 4' x 8' (1 per 4.0 sq. ft.)	DekSpike, or CD-10, 3" IB Insulation Plate	IB Approved Adhesive
Structural Concrete	Approved Insulation	10 per 4' x 8' (1 per 3.2 sq. ft.)	DekSpike, or CD-10, 3" IB Insulation Plate	IB Approved Adhesive
Structural Concrete	Approved Insulation	12 per 4' x 8' (1 per 2.67 sq. ft.)	DekSpike, or CD-10, 3" IB Insulation Plate	IB Approved Adhesive
Structural Concrete	Approved Insulation	16 per 4' x 8' (1 per 2.0 sq. ft.)	DekSpike, or CD-10, 3" IB Insulation Plate	IB Approved Adhesive
Structural Concrete	Approved Insulation	20 per 4' x 8' (1 per 1.6 sq. ft.)	DekSpike, or CD-10, 3" IB Insulation Plate	IB Approved Adhesive
Structural Concrete	Approved Insulation	24 per 4' x 8' (1 per 1.3 sq. ft.)	DekSpike, or CD-10, 3" IB Insulation Plate	IB Approved Adhesive

¹Approved Insulation: IB Energy Board II or III, or IB Approved UL Classified Polyisocyanurate

²The use of some IB Approved Insulations may not achieve UL Classification.

³Approved Membrane Adhesive: IB TPO Water Based Adhesive, IB TPO Bonding Adhesive, IB TPO LVOC Adhesive, IB TPO CA LVOC Adhesive, or IB TPO Spray Contact Adhesive.

Note: IB TPO Bonding Adhesive, IB TPO LVOC Adhesive and IB TPO CA LVOC Adhesive cannot be used with IB TPO FB Membranes.

System Uplift Note(s): **Refer to applicable Approval Guide for System Code and/or FM Approvals Information. ***Refer to Substrate Resistance Table for required pull-out values.

For additional information about IB Roof Systems requirements, recommendations, installation details, approvals, and limitations for the above assemblies, please refer to the latest edition of the IB Roof Systems Specifications Manual. For Technical Services please contact IB Technical Department at 800-426-1626.

Membranes:		Membrane Color:			Warranty Length**				Warranty Type**	
IB TPO SM 60 Mil	White*	Gray	Tan	10 Year	15 Year	20 Year	Contractor Warranty Only			
IB TPO SM 80 Mil	White*	Gray	Tan	15 Year	20 Year	25 Year	Total Systems - No Dollar Limit (TSW)			
IB TPO FB 115 Mil	White*			10 Year	15 Year	20 Year	Warranty Plus (WP)			
IB TPO FB 135 Mil	White*			15 Year	20 Year	25 Year	Commercial Limited Material Warranty (CLMW)			
									Residential Limited Material Warranty (RLMW)	

*Meets CRRC, Title 24, LEED (SRI)

**Refer to Warranty Selection Guide for Warranty Riders, Term Length Limitations, and eligibility requirements of the IB Warranty Program

Submitted By:	Project Name:
Company Name:	Address:
Email/Phone:	City/State: