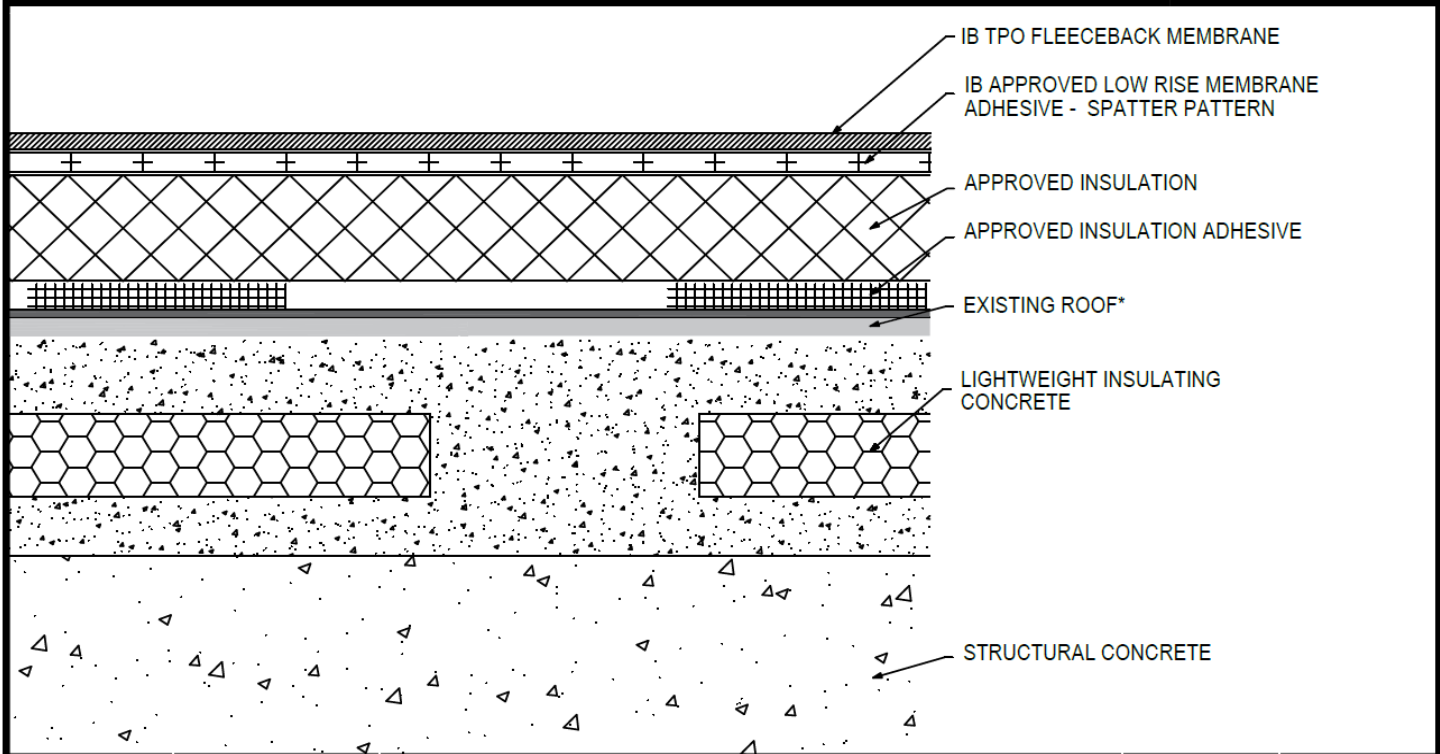


Adhered TPO Membrane (SP) - Insulation (RB) - Existing Roof - LWIC Deck (Recover)


Deck Type		Insulation (over Existing Roof) ¹			IB TPO Fleeceback Membrane Securement ^{4,5,6}
Sub-Deck	Top Deck	Type ^{2,3}	Insulation Adhesive ⁴	Pattern ^{***}	Attachment ^{5,6}
Structural Concrete	Lightweight Concrete	Approved Insulation	Approved Insulation Adhesive	Continuous Ribbons, 12" oc.	IB Approved Low Rise Membrane Adhesive
Structural Concrete	Lightweight Concrete	Approved Insulation	Approved Insulation Adhesive	Continuous Ribbons, 6" oc.	IB Approved Low Rise Membrane Adhesive

¹Existing Roof: APP or SBS modified bitumen, smooth or granule surfaced asphaltic built-up roof only.

²Approved Insulation: IB Energy Board II or III, or IB Approved UL Classified Polyisocyanurate

³The use of some IB Approved Insulations may not achieve UL Classification.

⁴Approved Insulation Adhesive: Rapid Set Adhesive, Rapid Set PG Foam, Rapid Set ECO Spray Foam, Rapid Set ECO₂ Spray Foam, Millennium One Step, Millennium PG-1 SAF Pump Grade, Millennium PG-1 EF ECO, Millennium PG-1 EF ECO₂, OB500 Adhesive Fastener, OB500 Cannister, or TruFast Roofing Adhesive

⁵Approved Low Rise Membrane Adhesive: IB Rapid Set ECO₂ Spray Foam, Millennium PG-1 EF ECO₂ Adhesive.

⁶The use of some IB Approved Low Rise Membrane Adhesives may not achieve UL Classification

System Uplift Note(s): ****Refer to applicable Approval Guide for System Code and/or FM Approvals Information. ***Refer to Substrate Resistance Table for required pull-out values.**

For additional information about IB Roof Systems requirements, recommendations, installation details, approvals, and limitations for the above assemblies, please refer to the latest edition of the IB Roof Systems Specifications Manual. For Technical Services please contact IB Technical Department at 800-426-1626.

Membranes:		Membrane Color:		Warranty Length ^{**}				Warranty Type ^{**}	
IB TPO FB 115 Mil		White*		10 Year	15 Year	20 Year		Contractor Warranty Only	
IB TPO FB 135 Mil		White*		10 Year	15 Year	20 Year		Total Systems - No Dollar Limit (TSW)	
*Meets CRRC, Title 24, LEED (SRI)				**Refer to Warranty Selection Guide for Warranty Riders, Term Length Limitations, and eligibility requirements of the IB Warranty Program					Warranty Plus (WP)
									Commercial Limited Material Warranty (CLMW)
									Residential Limited Material Warranty (RLMW)

Submitted By:		Project Name:	
Company Name:		Address:	
Email/Phone:		City/State:	