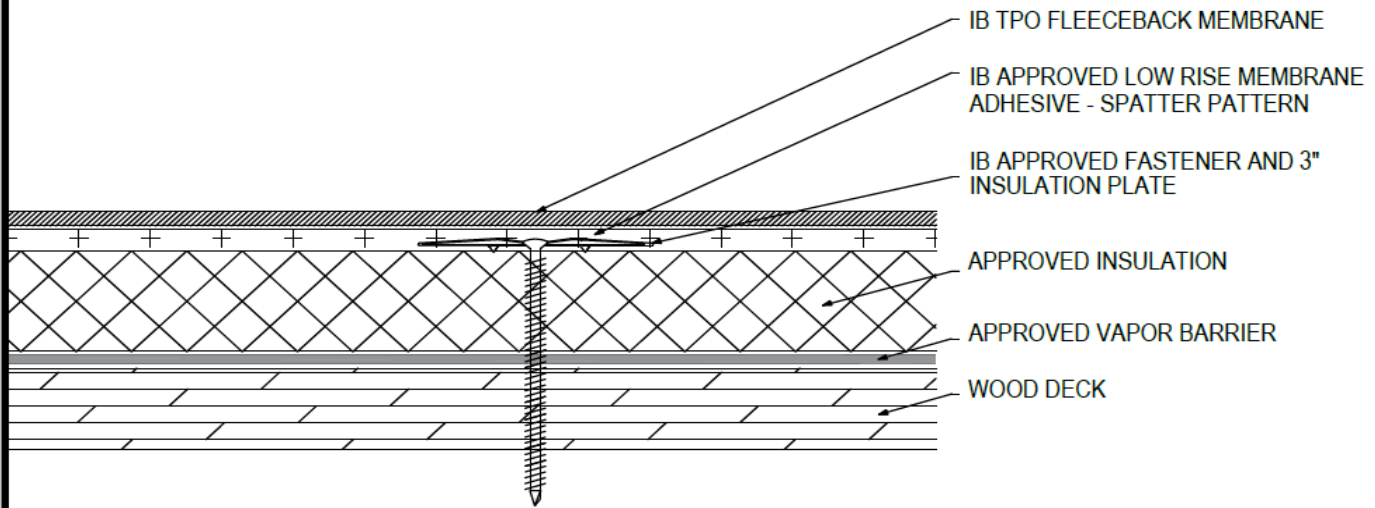


Adhered TPO Membrane (SP) - Insulation (MA) - Vapor Barrier - Wood Deck (New or Tear-Off)



Deck Type	Insulation/Vapor Barrier			IB Membrane Securement**
	Type ^{1,2,3}	Attachment	Fastener/Plate***	Type ⁴
Min. 7/16" OSB	Approved Insulation & Approved Vapor Barrier	12 per 4' x 8' (1 per 2.67 sq. ft.)	IB SD #12 or HD #14, IB 3" Insulation Plate	IB Approved Low Rise Membrane Adhesive
Min. 7/16" OSB	Approved Insulation & Approved Vapor Barrier	16 per 4' x 8' (1 per 2.0 sq. ft.)	IB SD #12 or HD #14, IB 3" Insulation Plate	IB Approved Low Rise Membrane Adhesive
Min. 1/2" Plywood	Approved Insulation & Approved Vapor Barrier	8 per 4' x 8' (1 per 4.0 sq. ft.)	IB SD #12 or HD #14, IB 3" Insulation Plate	IB Approved Low Rise Membrane Adhesive
Min. 1/2" Plywood	Approved Insulation & Approved Vapor Barrier	10 per 4' x 8' (1 per 3.2 sq. ft.)	IB SD #12 or HD #14, IB 3" Insulation Plate	IB Approved Low Rise Membrane Adhesive
Min. 1/2" Plywood	Approved Insulation & Approved Vapor Barrier	12 per 4' x 8' (1 per 2.67 sq. ft.)	IB SD #12 or HD #14, IB 3" Insulation Plate	IB Approved Low Rise Membrane Adhesive
Min. 19/32" Plywood	Approved Insulation & Approved Vapor Barrier	16 per 4' x 8' (1 per 2.0 sq. ft.)	IB SD #12 or HD #14, IB 3" Insulation Plate	IB Approved Low Rise Membrane Adhesive
Min. 19/32" Plywood	Approved Insulation & Approved Vapor Barrier	20 per 4' x 8' (1 per 1.6 sq. ft.)	IB SD #12 or HD #14, IB 3" Insulation Plate	IB Approved Low Rise Membrane Adhesive
Min. 19/32" Plywood	Approved Insulation & Approved Vapor Barrier	24 per 4' x 8' (1 per 1.3 sq. ft.)	IB SD #12 or HD #14, IB 3" Insulation Plate	IB Approved Low Rise Membrane Adhesive

¹Approved Vapor Barrier: IBarrier SA Membrane, IBarrier FG SAR, IBarrier XP SA Membrane, applied using self-adhesive techniques.

²Approved Insulation: IB Energy Board II or III, or IB Approved UL Classified Polyisocyanurate.

³The use of some IB Approved Insulations may not achieve UL Classification.

⁴Approved Low Rise Membrane Adhesive: IB Rapid Set ECO₂ Spray Foam, Millennium PG-1 EF ECO₂ Adhesive.

System Uplift Note(s): **Refer to applicable Approval Guide for System Code and/or FM Approvals Information. ***Refer to Substrate Resistance Table for required pull-out values.

For additional information about IB Roof Systems requirements, recommendations, installation details, approvals, and limitations for the above assemblies, please refer to the latest edition of the IB Roof Systems Specifications Manual. For Technical Services please contact IB Technical Department at 800-426-1626.

Membranes:	Membrane Color:	Warranty Length**			Warranty Type**
IB TPO FB 115 Mil	White*	10 Year	15 Year	20 Year	Contractor Warranty Only
IB TPO FB 135 Mil	White*	15 Year	20 Year	25 Year	Total Systems - No Dollar Limit (TSW)
*Meets CRRC, Title 24, LEED (SRI)		**Refer to Warranty Selection Guide for Warranty Riders, Term Length Limitations, and eligibility requirements of the IB Warranty Program			Warranty Plus (WP)
					Commercial Limited Material Warranty (CLMW)
					Residential Limited Material Warranty (RLMW)

Submitted By:	Project Name:
Company Name:	Address:
Email/Phone:	City/State: