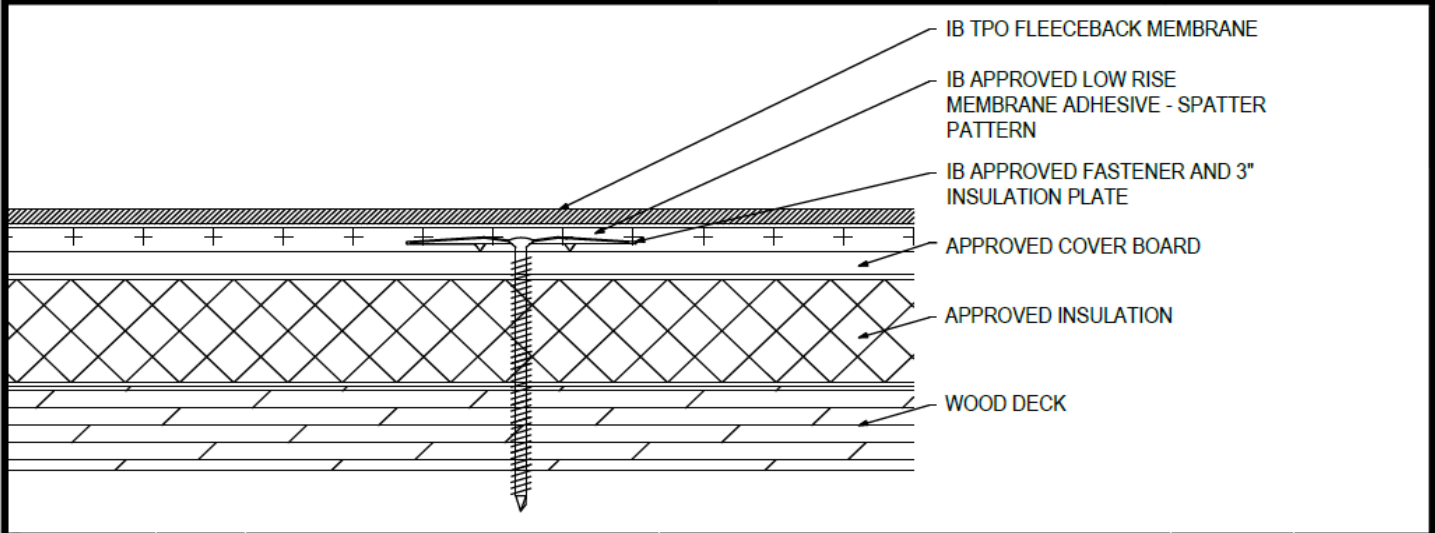


Adhered TPO Membrane (SP) - Cover Board (RB) - Insulation (MA) - Wood Deck (New or Tear-Off)



Deck Type	Insulation			Cover Board			IB Membrane Securement**
	Type ^{1,3}	Attachment	Fastener/Plate***	Type ^{2,3}	Adhesive Type ⁴	Pattern***	Attachment ⁵
Min. 7/16" OSB	Approved Insulation	12 per 4' x 8' (1 per 2.67 sq. ft.)	IB SD #12 or HD #14, IB 3" Insulation Plate	Approved Cover Board	Approved Insulation Adhesive	Min. Four Continuous Ribbons, 12" oc.	IB Approved Low Rise Membrane Adhesive
Min. 7/16" OSB	Approved Insulation	16 per 4' x 8' (1 per 2.0 sq. ft.)	IB SD #12 or HD #14, IB 3" Insulation Plate	Approved Cover Board	Approved Insulation Adhesive	Min. Eight Continuous Ribbons, 6" oc.	IB Approved Low Rise Membrane Adhesive
Min. 1/2" Plywood	Approved Insulation	10 per 4' x 8' (1 per 3.2 sq. ft.)	IB SD #12 or HD #14, IB 3" Insulation Plate	Approved Cover Board	Approved Insulation Adhesive	Min. Four Continuous Ribbons, 12" oc.	IB Approved Low Rise Membrane Adhesive
Min. 1/2" Plywood	Approved Insulation	8 per 4' x 8' (1 per 4.0 sq. ft.)	IB SD #12 or HD #14, IB 3" Insulation Plate	Approved Cover Board	Approved Insulation Adhesive	Min. Eight Continuous Ribbons, 6" oc.	IB Approved Low Rise Membrane Adhesive
Min. 1/2" Plywood	Approved Insulation	10 per 4' x 8' (1 per 3.2 sq. ft.)	IB SD #12 or HD #14, IB 3" Insulation Plate	Approved Cover Board	Approved Insulation Adhesive	Min. Four Continuous Ribbons, 12" oc.	IB Approved Low Rise Membrane Adhesive
Min. 19/32" Plywood	Approved Insulation	16 per 4' x 8' (1 per 2.0 sq. ft.)	IB SD #12 or HD #14, IB 3" Insulation Plate	Approved Cover Board	Approved Insulation Adhesive	Min. Eight Continuous Ribbons, 6" oc.	IB Approved Low Rise Membrane Adhesive
Min. 19/32" Plywood	Approved Insulation	20 per 4' x 8' (1 per 1.6 sq. ft.)	IB SD #12 or HD #14, IB 3" Insulation Plate	Approved Cover Board	Approved Insulation Adhesive	Min. Four Continuous Ribbons, 12" oc.	IB Approved Low Rise Membrane Adhesive
Min. 19/32" Plywood	Approved Insulation	24 per 4' x 8' (1 per 1.3 sq. ft.)	IB SD #12 or HD #14, IB 3" Insulation Plate	Approved Cover Board	Approved Insulation Adhesive	Min. Eight Continuous Ribbons, 6" oc.	IB Approved Low Rise Membrane Adhesive

¹Approved Insulation: IB Energy Board II or III, or IB Approved UL Classified Polyisocyanurate, IB Approved UL Classified Expanded Polystyrene, IB Approved UL Classified Extruded Polystyrene Insulation.
²Approved Cover Board: DensDeck Prime, DensDeck ProFast Prime, DensDeck StormX Prime, Securock Ultraight Coated Glass-Mat, Securock Gypsum Fiber Board, or DEXcell FA Glass Mat Roof Board, minimum 1/4" thickness; or minimum 7/16" DEXcell Cement Roof Board; or minimum 1/2" IB HD ISO-J, or 1/2" IB Recovery Board III-J.
³The use of some IB Approved Insulations and/or Cover Boards or combinations thereof may not achieve UL Classification.
⁴Approved Insulation Adhesive: Rapid Set Adhesive, Rapid Set PG Foam, Rapid Set ECO Spray Foam, Rapid Set ECO₂ Spray Foam, Millennium One Step, Millennium PG-1 SAF Pump Grade, Millennium PG-1 EF ECO, Millennium PG-1 EF ECO₂, OB500 Adhesive Fastener, OB500 Cannister, or TruFast Roofing Adhesive.
⁵Approved Low Rise Membrane Adhesive: IB Rapid Set ECO₂ Spray Foam, Millennium PG-1 EF ECO₂ Adhesive.
 System Uplift Note(s): **Refer to applicable Approval Guide for System Code and/or FM Approvals Information. ***Refer to Substrate Resistance Table for required pull-out values.

For additional information about IB Roof Systems requirements, recommendations, installation details, approvals, and limitations for the above assemblies, please refer to the latest edition of the IB Roof Systems Specifications Manual. For Technical Services please contact IB Technical Department at 800-426-1626.

Membranes:		Membrane Color:		Warranty Length**				Warranty Type**	
IB TPO FB 115 Mil	White*			10 Year	15 Year	20 Year		Contractor Warranty Only	
IB TPO FB 135 Mil	White*			15 Year	20 Year	25 Year		Total Systems - No Dollar Limit (TSW)	
*Meets CRRC, Title 24, LEED (SRI)				**Refer to Warranty Selection Guide for Warranty Riders, Term Length Limitations, and eligibility requirements of the IB Warranty Program					Warranty Plus (WP)
									Commercial Limited Material Warranty (CLMW)
									Residential Limited Material Warranty (RLMW)
Submitted By:		Project Name:		Address:		City/State:			
Company Name:		Project Name:		Address:		City/State:			
Email/Phone:		Project Name:		Address:		City/State:			