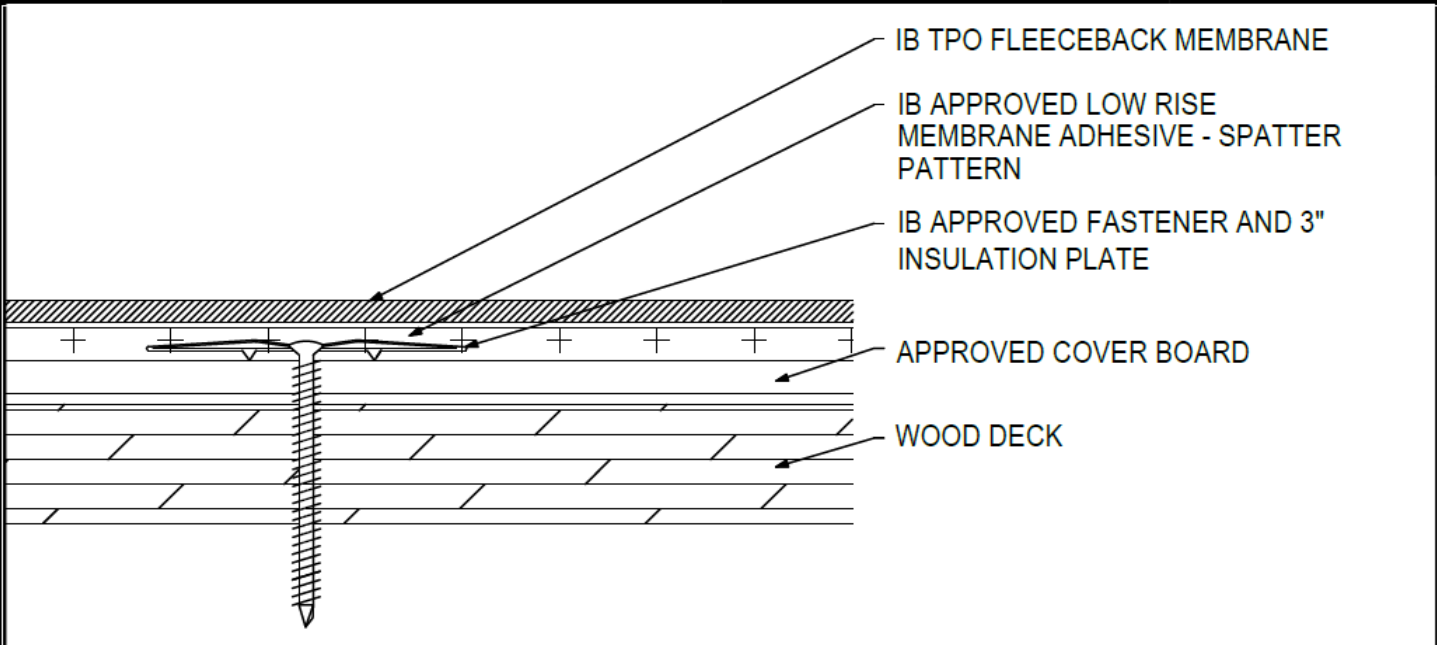


Adhered TPO Membrane (SP) - Cover Board (MA) - Wood Deck (New or Tear-Off)



Deck Type	Cover Board			IB Membrane Securement**
	Type ^{1,2}	Attachment	Fastener/Plate***	Attachment ³
Min. 7/16" OSB	Approved Cover Board	12 per 4' x 8' (1 per 2.67 sq. ft.)	IB SD #12 or HD #14, IB 3" Insulation Plate	IB Approved Low Rise Membrane Adhesive
Min. 7/16" OSB	Approved Cover Board	16 per 4' x 8' (1 per 2.0 sq. ft.)	IB SD #12 or HD #14, IB 3" Insulation Plate	IB Approved Low Rise Membrane Adhesive
Min. 1/2" Plywood	Approved Cover Board	8 per 4' x 8' (1 per 4.0 sq. ft.)	IB SD #12 or HD #14, IB 3" Insulation Plate	IB Approved Low Rise Membrane Adhesive
Min. 1/2" Plywood	Approved Cover Board	10 per 4' x 8' (1 per 3.2 sq. ft.)	IB SD #12 or HD #14, IB 3" Insulation Plate	IB Approved Low Rise Membrane Adhesive
Min. 1/2" Plywood	Approved Cover Board	12 per 4' x 8' (1 per 2.67 sq. ft.)	IB SD #12 or HD #14, IB 3" Insulation Plate	IB Approved Low Rise Membrane Adhesive
Min. 19/32" Plywood	Approved Cover Board	16 per 4' x 8' (1 per 2.0 sq. ft.)	IB SD #12 or HD #14, IB 3" Insulation Plate	IB Approved Low Rise Membrane Adhesive
Min. 19/32" Plywood	Approved Cover Board	20 per 4' x 8' (1 per 1.6 sq. ft.)	IB SD #12 or HD #14, IB 3" Insulation Plate	IB Approved Low Rise Membrane Adhesive
Min. 19/32" Plywood	Approved Cover Board	24 per 4' x 8' (1 per 1.3 sq. ft.)	IB SD #12 or HD #14, IB 3" Insulation Plate	IB Approved Low Rise Membrane Adhesive

¹**Approved Cover Board:** DensDeck Prime, DensDeck ProFast Prime, DensDeck StormX Prime, Securock Ultralight Coated Glass-Mat, Securock Gypsum Fiber Board, or DEXcell FA Glass Mat Roof Board, minimum 1/4" thickness; or minimum 7/16" DEXcell Cement Roof Board; or minimum 1/2" IB HD ISO-J, or 1/2" IB Recovery Board III-J.

²The use of some IB Approved Cover Boards may not achieve UL Classification.

³**Approved Low Rise Membrane Adhesive:** IB Rapid Set ECO₂ Spray Foam, Millennium PG-1 EF ECO₂ Adhesive.

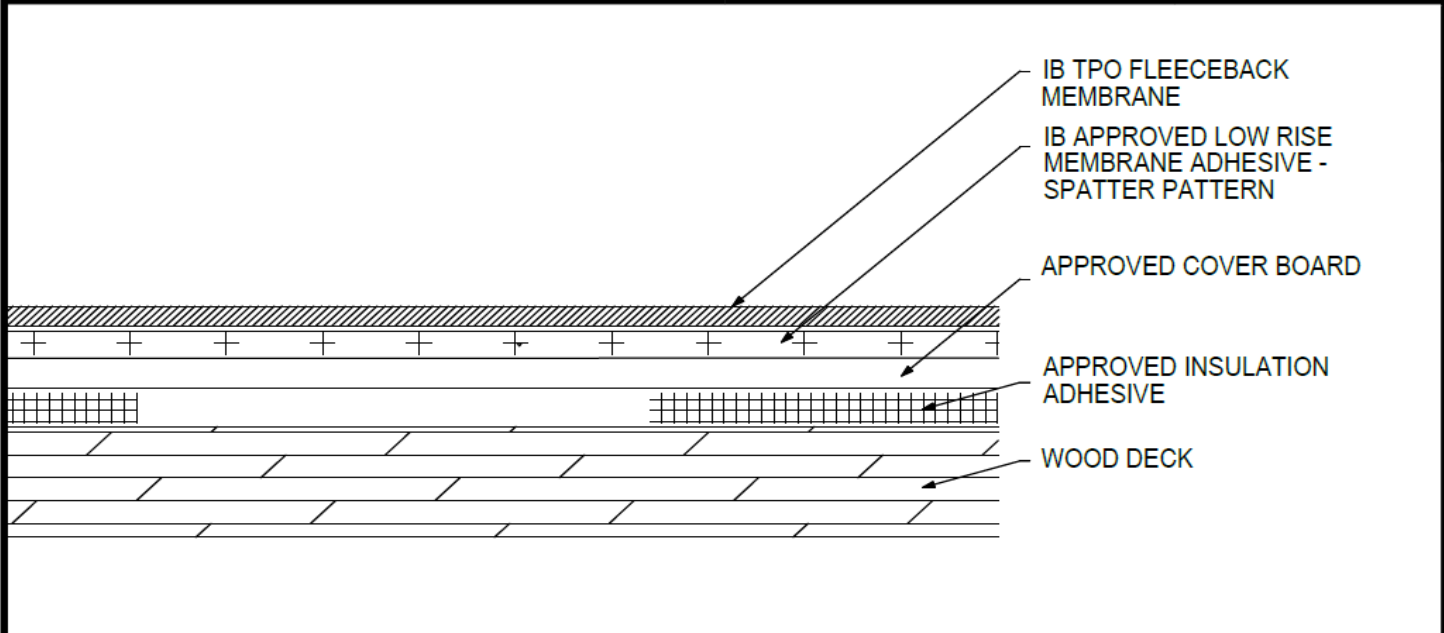
System Uplift Note(s): **Refer to applicable Approval Guide for System Code and/or FM Approvals Information. ***Refer to Substrate Resistance Table for required pull-out values.

For additional information about IB Roof Systems requirements, recommendations, installation details, approvals, and limitations for the above assemblies, please refer to the latest edition of the IB Roof Systems Specifications Manual. For Technical Services please contact IB Technical Department at 800-426-1626.

Membranes:		Membrane Color:		Warranty Length**			Warranty Type**	
IB TPO FB 115 Mil		White*		10 Year	15 Year	20 Year	Contractor Warranty Only Total Systems - No Dollar Limit (TSW) Warranty Plus (WP) Commercial Limited Material Warranty (CLMW) Residential Limited Material Warranty (RLMW)	
IB TPO FB 135 Mil		White*		15 Year	20 Year	25 Year		
[*] Meets CRRC, Title 24, LEED (SRI)				^{**} Refer to Warranty Selection Guide for Warranty Riders, Term Length Limitations, and eligibility requirements of the IB Warranty Program				

Submitted By:		Project Name:	
Company Name:		Address:	
Email/Phone:		City/State:	

Adhered TPO Membrane (SP) - Cover Board (RB) - Wood Deck (New or Tear-Off)



Deck Type	Insulation			IB Membrane Securement**
	Type ^{1,2}	Insulation Adhesive ³	Pattern	Attachment ⁴
Min. 7/16" OSB	Approved Insulation	Approved Insulation Adhesive	Min. Four Continuous Ribbons, 12" oc.	IB Approved Low Rise Membrane Adhesive
Min. 1/2" Plywood	Approved Insulation	Approved Insulation Adhesive	Min. Four Continuous Ribbons, 12" oc.	IB Approved Low Rise Membrane Adhesive
Min. 19/32" Plywood	Approved Insulation	Approved Insulation Adhesive	Min. Four Continuous Ribbons, 12" oc.	IB Approved Low Rise Membrane Adhesive

¹Approved Insulation: IB Energy Board II or III, or IB Approved UL Classified Polyisocyanurate.

²The use of some IB Approved Insulations may not achieve UL Classification.

³Approved Insulation Adhesive: Rapid Set Adhesive, Rapid Set PG Foam, Rapid Set ECO Spray Foam, Rapid Set ECO₂ Spray Foam, Millennium One Step, Millennium PG-1 SAF Pump Grade, Millennium PG-1 EF ECO, Millennium PG-1 EF ECO₂, OB500 Adhesive Fastener, OB500 Cannister, or TruFast Roofing Adhesive.

⁴Approved Low Rise Membrane Adhesive: IB Rapid Set ECO₂ Spray Foam, Millennium PG-1 EF ECO₂ Adhesive.

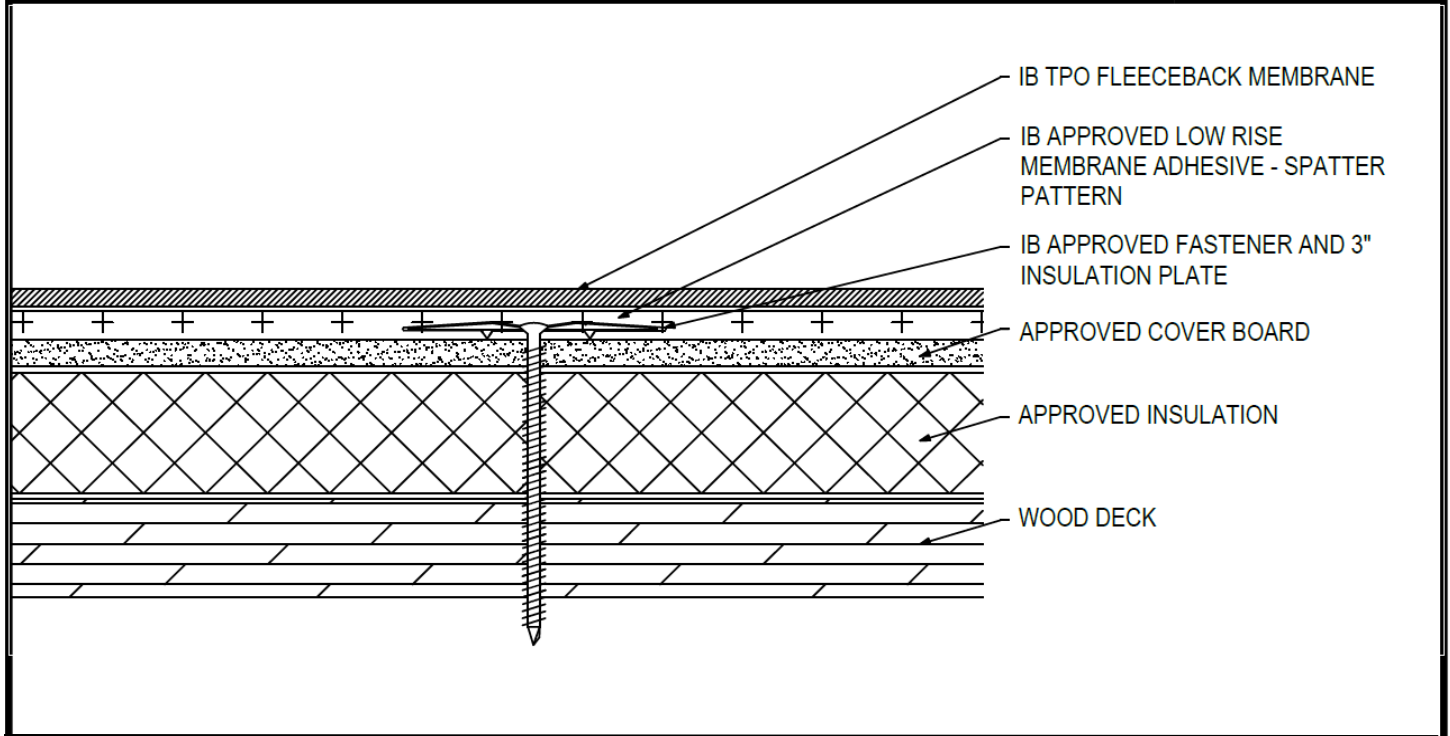
System Uplift Note(s): **Refer to applicable Approval Guide for System Code and/or FM Approvals Information. ***Refer to Substrate Resistance Table for required pull-out values.

For additional information about IB Roof Systems requirements, recommendations, installation details, approvals, and limitations for the above assemblies, please refer to the latest edition of the IB Roof Systems Specifications Manual. For Technical Services please contact IB Technical Department at 800-426-1626.

Membranes:		Membrane Color:		Warranty Length**				Warranty Type**	
IB TPO FB 115 Mil		White*		10 Year	15 Year	20 Year		Contractor Warranty Only	
IB TPO FB 135 Mil		White*		15 Year	20 Year	25 Year		Total Systems - No Dollar Limit (TSW)	
*Meets CRRC, Title 24, LEED (SRI)				**Refer to Warranty Selection Guide for Warranty Riders, Term Length Limitations, and eligibility requirements of the IB Warranty Program					Warranty Plus (WP)
									Commercial Limited Material Warranty (CLMW)
									Residential Limited Material Warranty (RLMW)

Submitted By:		Project Name:	
Company Name:		Address:	
Email/Phone:		City/State:	

Adhered TPO Membrane (SP) - Cover Board (MA) - Insulation (MA) - Wood Deck (New or Tear-Off)



Deck Type	Insulation/Cover Board			IB Membrane Securement**
	Type ^{1,2,3}	Attachment	Fastener/Plate***	Attachment ⁴
Min. 7/16" OSB	Approved Insulation & Approved Cover Board	12 per 4' x 8' (1 per 2.67 sq. ft.)	IB SD #12 or HD #14, IB 3" Insulation Plate	IB Approved Low Rise Membrane Adhesive
Min. 7/16" OSB	Approved Insulation & Approved Cover Board	16 per 4' x 8' (1 per 2.0 sq. ft.)	IB SD #12 or HD #14, IB 3" Insulation Plate	IB Approved Low Rise Membrane Adhesive
Min. 1/2" Plywood	Approved Insulation & Approved Cover Board	8 per 4' x 8' (1 per 4.0 sq. ft.)	IB SD #12 or HD #14, IB 3" Insulation Plate	IB Approved Low Rise Membrane Adhesive
Min. 1/2" Plywood	Approved Insulation & Approved Cover Board	10 per 4' x 8' (1 per 3.2 sq. ft.)	IB SD #12 or HD #14, IB 3" Insulation Plate	IB Approved Low Rise Membrane Adhesive
Min. 1/2" Plywood	Approved Insulation & Approved Cover Board	12 per 4' x 8' (1 per 2.67 sq. ft.)	IB SD #12 or HD #14, IB 3" Insulation Plate	IB Approved Low Rise Membrane Adhesive
Min. 19/32" Plywood	Approved Insulation & Approved Cover Board	16 per 4' x 8' (1 per 2.0 sq. ft.)	IB SD #12 or HD #14, IB 3" Insulation Plate	IB Approved Low Rise Membrane Adhesive
Min. 19/32" Plywood	Approved Insulation & Approved Cover Board	20 per 4' x 8' (1 per 1.6 sq. ft.)	IB SD #12 or HD #14, IB 3" Insulation Plate	IB Approved Low Rise Membrane Adhesive
Min. 19/32" Plywood	Approved Insulation & Approved Cover Board	24 per 4' x 8' (1 per 1.3 sq. ft.)	IB SD #12 or HD #14, IB 3" Insulation Plate	IB Approved Low Rise Membrane Adhesive

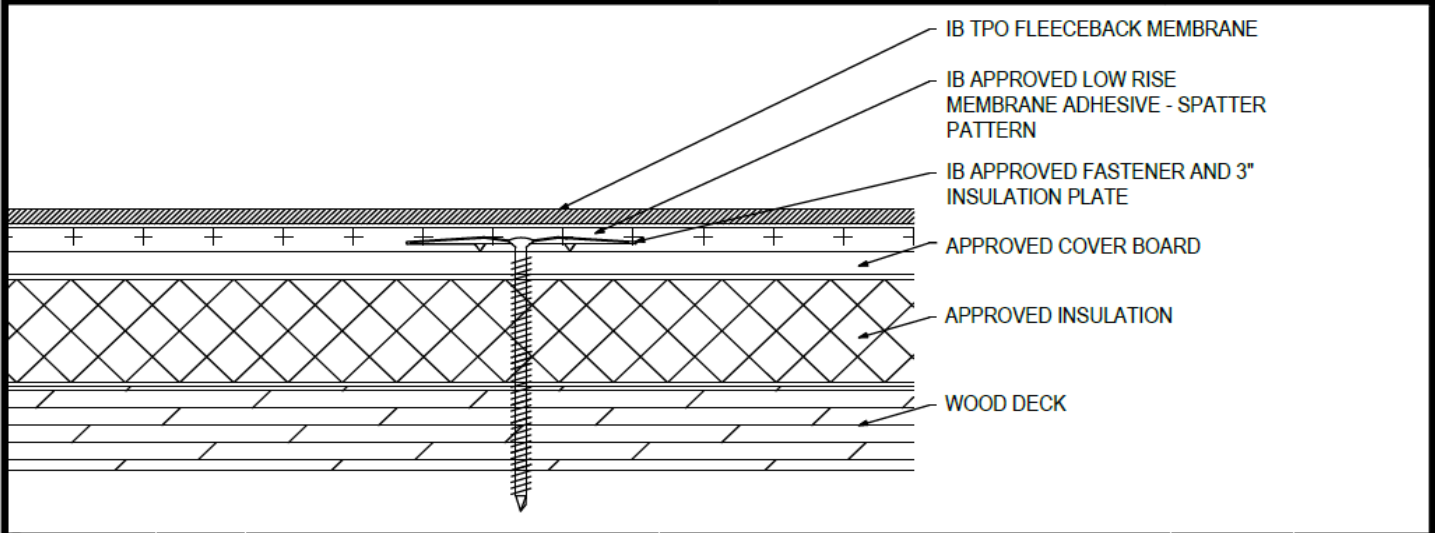
¹Approved Insulation: IB Energy Board II or III, or IB Approved UL Classified Polyisocyanurate, IB Approved UL Classified Expanded Polystyrene, IB Approved UL Classified Extruded Polystyrene Insulation.
²Approved Cover Board: DensDeck Prime, DensDeck ProFast Prime, DensDeck StormX Prime, Securock Ultralight Coated Glass-Mat, Securock Gypsum Fiber Board, or DEXcell FA Glass Mat Roof Board, minimum 1/4" thickness; or minimum 7/16" DEXcell Cement Roof Board; or minimum 1/2" IB HD ISO-J, or 1/2" IB Recovery Board III-J.
³The use of some IB Approved Insulations and/or Cover Boards or combinations thereof may not achieve UL Classification.
⁴Approved Low Rise Membrane Adhesive: IB Rapid Set ECO₂ Spray Foam, Millennium PG-1 EF ECO₂ Adhesive.
System Uplift Note(s): **Refer to applicable Approval Guide for System Code and/or FM Approvals Information. *Refer to Substrate Resistance Table for required pull-out values.**

For additional information about IB Roof Systems requirements, recommendations, installation details, approvals, and limitations for the above assemblies, please refer to the latest edition of the IB Roof Systems Specifications Manual. For Technical Services please contact IB Technical Department at 800-426-1626.

Membranes:		Membrane Color:		Warranty Length**				Warranty Type**	
IB TPO FB 115 Mil	White*			10 Year	15 Year	20 Year		Contractor Warranty Only	
IB TPO FB 135 Mil	White*			15 Year	20 Year	25 Year		Total Systems - No Dollar Limit (TSW)	
*Meets CRRC, Title 24, LEED (SRI)				**Refer to Warranty Selection Guide for Warranty Riders, Term Length Limitations, and eligibility requirements of the IB Warranty Program					Warranty Plus (WP)
									Commercial Limited Material Warranty (CLMW)
									Residential Limited Material Warranty (RLMW)

Submitted By:		Project Name:	
Company Name:		Address:	
Email/Phone:		City/State:	

Adhered TPO Membrane (SP) - Cover Board (RB) - Insulation (MA) - Wood Deck (New or Tear-Off)



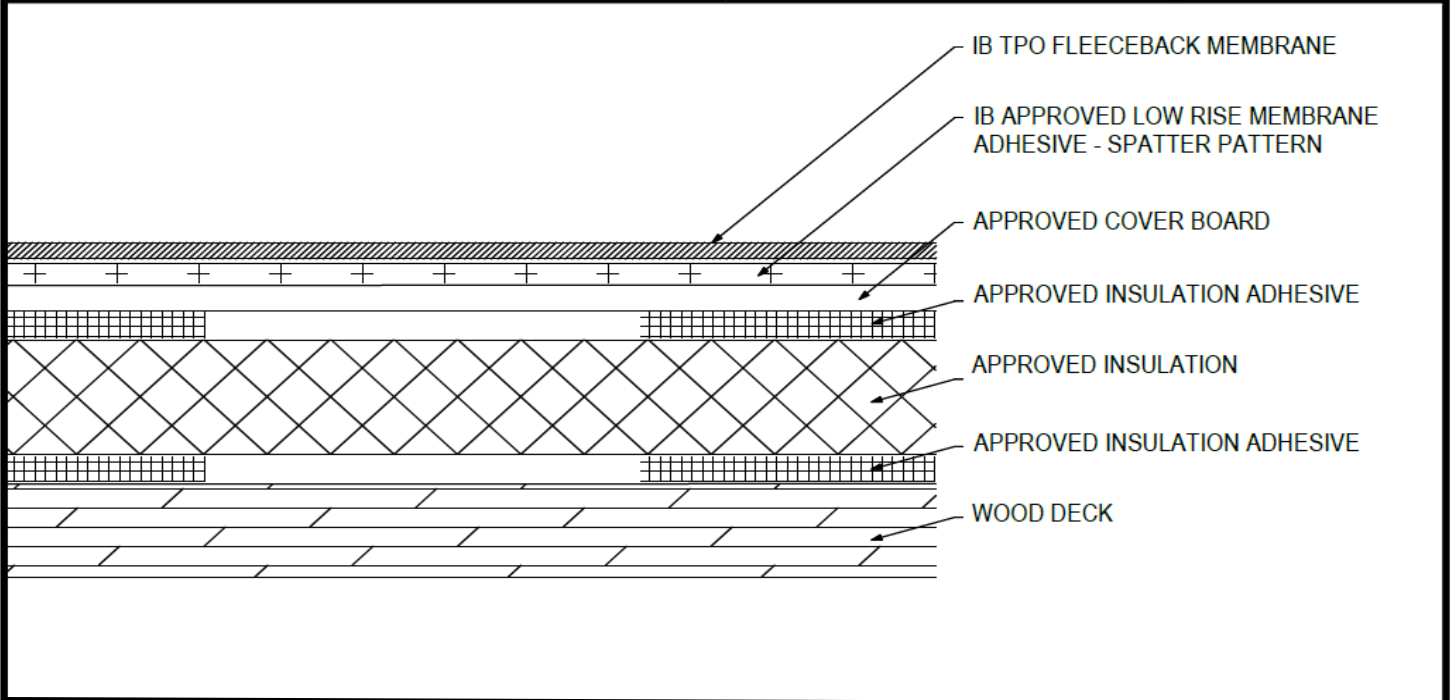
Deck Type	Insulation			Cover Board			IB Membrane Securement**
	Type ^{1,3}	Attachment	Fastener/Plate***	Type ^{2,3}	Adhesive Type ⁴	Pattern***	Attachment ⁵
Min. 7/16" OSB	Approved Insulation	12 per 4' x 8' (1 per 2.67 sq. ft.)	IB SD #12 or HD #14, IB 3" Insulation Plate	Approved Cover Board	Approved Insulation Adhesive	Min. Four Continuous Ribbons, 12" oc.	IB Approved Low Rise Membrane Adhesive
Min. 7/16" OSB	Approved Insulation	16 per 4' x 8' (1 per 2.0 sq. ft.)	IB SD #12 or HD #14, IB 3" Insulation Plate	Approved Cover Board	Approved Insulation Adhesive	Min. Eight Continuous Ribbons, 6" oc.	IB Approved Low Rise Membrane Adhesive
Min. 1/2" Plywood	Approved Insulation	10 per 4' x 8' (1 per 3.2 sq. ft.)	IB SD #12 or HD #14, IB 3" Insulation Plate	Approved Cover Board	Approved Insulation Adhesive	Min. Four Continuous Ribbons, 12" oc.	IB Approved Low Rise Membrane Adhesive
Min. 1/2" Plywood	Approved Insulation	8 per 4' x 8' (1 per 4.0 sq. ft.)	IB SD #12 or HD #14, IB 3" Insulation Plate	Approved Cover Board	Approved Insulation Adhesive	Min. Eight Continuous Ribbons, 6" oc.	IB Approved Low Rise Membrane Adhesive
Min. 1/2" Plywood	Approved Insulation	10 per 4' x 8' (1 per 3.2 sq. ft.)	IB SD #12 or HD #14, IB 3" Insulation Plate	Approved Cover Board	Approved Insulation Adhesive	Min. Four Continuous Ribbons, 12" oc.	IB Approved Low Rise Membrane Adhesive
Min. 19/32" Plywood	Approved Insulation	16 per 4' x 8' (1 per 2.0 sq. ft.)	IB SD #12 or HD #14, IB 3" Insulation Plate	Approved Cover Board	Approved Insulation Adhesive	Min. Eight Continuous Ribbons, 6" oc.	IB Approved Low Rise Membrane Adhesive
Min. 19/32" Plywood	Approved Insulation	20 per 4' x 8' (1 per 1.6 sq. ft.)	IB SD #12 or HD #14, IB 3" Insulation Plate	Approved Cover Board	Approved Insulation Adhesive	Min. Four Continuous Ribbons, 12" oc.	IB Approved Low Rise Membrane Adhesive
Min. 19/32" Plywood	Approved Insulation	24 per 4' x 8' (1 per 1.3 sq. ft.)	IB SD #12 or HD #14, IB 3" Insulation Plate	Approved Cover Board	Approved Insulation Adhesive	Min. Eight Continuous Ribbons, 6" oc.	IB Approved Low Rise Membrane Adhesive

¹Approved Insulation: IB Energy Board II or III, or IB Approved UL Classified Polyisocyanurate, IB Approved UL Classified Expanded Polystyrene, IB Approved UL Classified Extruded Polystyrene Insulation.
²Approved Cover Board: DensDeck Prime, DensDeck ProFast Prime, DensDeck StormX Prime, Securock Ultraight Coated Glass-Mat, Securock Gypsum Fiber Board, or DEXcell FA Glass Mat Roof Board, minimum 1/4" thickness; or minimum 7/16" DEXcell Cement Roof Board; or minimum 1/2" IB HD ISO-J, or 1/2" IB Recovery Board III-J.
³The use of some IB Approved Insulations and/or Cover Boards or combinations thereof may not achieve UL Classification.
⁴Approved Insulation Adhesive: Rapid Set Adhesive, Rapid Set PG Foam, Rapid Set ECO Spray Foam, Rapid Set ECO₂ Spray Foam, Millennium One Step, Millennium PG-1 SAF Pump Grade, Millennium PG-1 EF ECO, Millennium PG-1 EF ECO₂, OB500 Adhesive Fastener, OB500 Cannister, or TruFast Roofing Adhesive.
⁵Approved Low Rise Membrane Adhesive: IB Rapid Set ECO₂ Spray Foam, Millennium PG-1 EF ECO₂ Adhesive.
System Uplift Note(s): **Refer to applicable Approval Guide for System Code and/or FM Approvals Information. *Refer to Substrate Resistance Table for required pull-out values.**

For additional information about IB Roof Systems requirements, recommendations, installation details, approvals, and limitations for the above assemblies, please refer to the latest edition of the IB Roof Systems Specifications Manual. For Technical Services please contact IB Technical Department at 800-426-1626.

Membranes:		Membrane Color:		Warranty Length**				Warranty Type**	
IB TPO FB 115 Mil	White*			10 Year	15 Year	20 Year		Contractor Warranty Only	
IB TPO FB 135 Mil	White*			15 Year	20 Year	25 Year		Total Systems - No Dollar Limit (TSW)	
*Meets CRRC, Title 24, LEED (SRI)				**Refer to Warranty Selection Guide for Warranty Riders, Term Length Limitations, and eligibility requirements of the IB Warranty Program					Warranty Plus (WP)
									Commercial Limited Material Warranty (CLMW)
									Residential Limited Material Warranty (RLMW)
Submitted By:		Project Name:		Address:					
Company Name:		City/State:							
Email/Phone:									

Adhered TPO Membrane (SP) - Cover Board (RB) - Insulation (RB) - Wood Deck (New or Tear-Off)



Deck Type	Insulation			Cover Board			IB Membrane Securement**
	Type ¹	Attachment	Fastener/Plate***	Type ²	Adhesive Type ³	Pattern***	Attachment ⁵
Min. 7/16" OSB	Approved Insulation	Approved Insulation Adhesive	Min. Four Continuous Ribbons, 12" oc.	Approved Cover Board	Approved Insulation Adhesive	Min. Four Continuous Ribbons, 12" oc.	IB Approved Adhesive
Min. 7/16" OSB	Approved Insulation	Approved Insulation Adhesive	Min. Eight Continuous Ribbons, 6" oc.	Approved Cover Board	Approved Insulation Adhesive	Min. Eight Continuous Ribbons, 6" oc.	IB Approved Adhesive
Min. 1/2" Plywood	Approved Insulation	Approved Insulation Adhesive	Min. Four Continuous Ribbons, 12" oc.	Approved Cover Board	Approved Insulation Adhesive	Min. Four Continuous Ribbons, 12" oc.	IB Approved Adhesive
Min. 1/2" Plywood	Approved Insulation	Approved Insulation Adhesive	Min. Eight Continuous Ribbons, 6" oc.	Approved Cover Board	Approved Insulation Adhesive	Min. Eight Continuous Ribbons, 6" oc.	IB Approved Adhesive
Min. 19/32" Plywood	Approved Insulation	Approved Insulation Adhesive	Min. Four Continuous Ribbons, 12" oc.	Approved Cover Board	Approved Insulation Adhesive	Min. Four Continuous Ribbons, 12" oc.	IB Approved Adhesive
Min. 19/32" Plywood	Approved Insulation	Approved Insulation Adhesive	Min. Eight Continuous Ribbons, 6" oc.	Approved Cover Board	Approved Insulation Adhesive	Min. Eight Continuous Ribbons, 6" oc.	IB Approved Adhesive

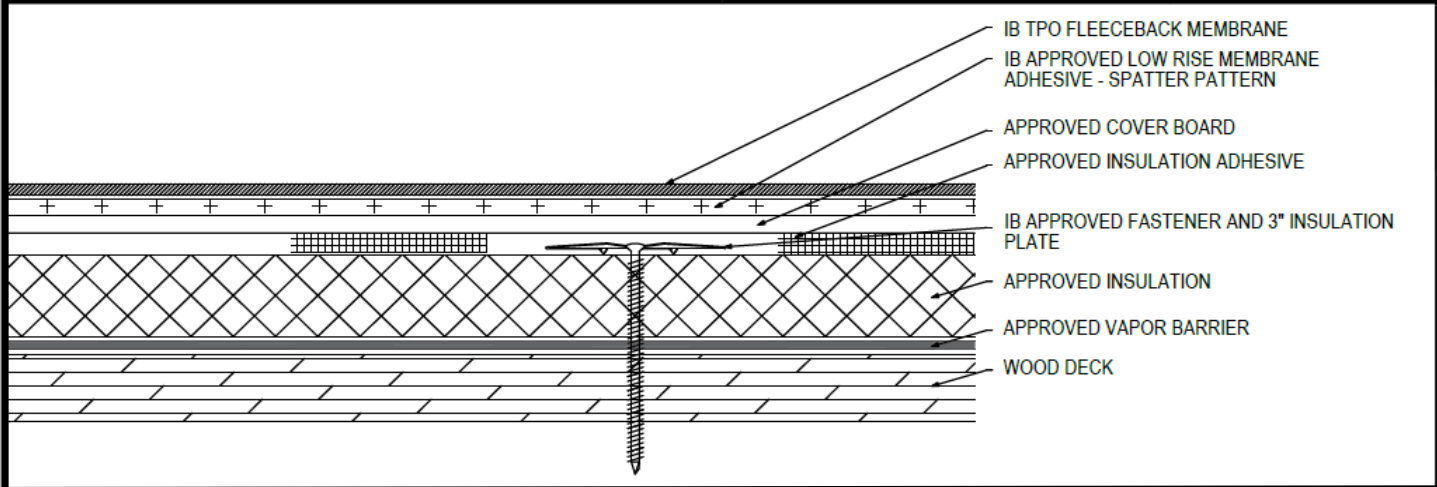
¹Approved Insulation: IB Energy Board II or III, or IB Approved UL Classified Polyisocyanurate, IB Approved UL Classified Expanded Polystyrene, IB Approved UL Classified Extruded Polystyrene Insulation.
²Approved Cover Board: DensDeck Prime, DensDeck StormX Prime, Securock Ultralight Coated Glass-Mat, Securock Gypsum Fiber Board, or DEXcell FA Glass Mat Roof Board, minimum 1/4" thickness; or minimum 7/16" DEXcell Cement Roof Board; or minimum 1/2" IB HD ISO-J, or 1/2" IB Recovery Energy Board III-J.
³The use of some IB Approved Insulations and/or Cover Boards or combinations thereof may not achieve UL Classification.
⁴Approved Insulation Adhesive: Rapid Set Adhesive, Rapid Set PG Foam, Rapid Set ECO Spray Foam, Rapid Set ECO₂ Spray Foam, Millennium One Step, Millennium PG-1 SAF Pump Grade, Millennium PG-1 EF ECO, Millennium PG-1 EF ECO₂, OB500 Adhesive Fastener, OB500 Cannister, or TruFast Roofing Adhesive.
⁵Approved Low Rise Membrane Adhesive: IB Rapid Set ECO₂ Spray Foam, Millennium PG-1 EF ECO₂ Adhesive.
System Uplift Note(s): **Refer to applicable Approval Guide for System Code and/or FM Approvals Information. *Refer to Substrate Resistance Table for required pull-out values.**

For additional information about IB Roof Systems requirements, recommendations, installation details, approvals, and limitations for the above assemblies, please refer to the latest edition of the IB Roof Systems Specifications Manual. For Technical Services please contact IB Technical Department at 800-426-1626.

Membranes:		Membrane Color:		Warranty Length**			Warranty Type**	
IB TPO FB 115 Mil	White*			10 Year	15 Year	20 Year	Contractor Warranty Only	
IB TPO FB 135 Mil	White*			15 Year	20 Year	25 Year	Total Systems - No Dollar Limit (TSW)	
*Meets CRRC, Title 24, LEED (SRI)				**Refer to Warranty Selection Guide for Warranty Riders, Term Length Limitations, and eligibility requirements of the IB Warranty Program			Warranty Plus (WP)	
							Commercial Limited Material Warranty (CLMW)	
							Residential Limited Material Warranty (RLMW)	

Submitted By:		Project Name:	
Company Name:		Address:	
Email/Phone:		City/State:	

Adhered TPO Membrane (SP) - Cover Board (RB) - Insulation (MA) - Vapor Barrier - Wood Deck (New or Tear-Off)



Deck Type	Insulation/Vapor Barrier			Cover Board			IB Membrane Securement**
	Type ^{1,2}	Attachment	Fastener/Plate***	Type ^{3,4}	Adhesive Type ⁵	Attachment***	Type ⁶
Min. 1/2" Plywood	Approved Insulation & Approved Vapor Barrier	12 per 4' x 8' (1 per 2.67 sq. ft.)	IB SD #12 or HD #14, IB 3" Insulation Plate	Approved Cover Board	Approved Insulation Adhesive	Min. Four Continuous Ribbons, 12" oc.	IB Approved Low Rise Membrane Adhesive
Min. 1/2" Plywood	Approved Insulation & Approved Vapor Barrier	12 per 4' x 8' (1 per 2.67 sq. ft.)	IB SD #12 or HD #14, IB 3" Insulation Plate	Approved Cover Board	Approved Insulation Adhesive	Min. Eight Continuous Ribbons, 6" oc.	IB Approved Low Rise Membrane Adhesive
Min. 1/2" Plywood	Approved Insulation & Approved Vapor Barrier	16 per 4' x 8' (1 per 2.0 sq. ft.)	IB SD #12 or HD #14, IB 3" Insulation Plate	Approved Cover Board	Approved Insulation Adhesive	Min. Four Continuous Ribbons, 12" oc.	IB Approved Low Rise Membrane Adhesive
Min. 1/2" Plywood	Approved Insulation & Approved Vapor Barrier	16 per 4' x 8' (1 per 2.0 sq. ft.)	IB SD #12 or HD #14, IB 3" Insulation Plate	Approved Cover Board	Approved Insulation Adhesive	Min. Eight Continuous Ribbons, 6" oc.	IB Approved Low Rise Membrane Adhesive
Min. 19/32" Plywood	Approved Insulation & Approved Vapor Barrier	20 per 4' x 8' (1 per 1.6 sq. ft.)	IB SD #12 or HD #14, IB 3" Insulation Plate	Approved Cover Board	Approved Insulation Adhesive	Min. Four Continuous Ribbons, 12" oc.	IB Approved Low Rise Membrane Adhesive
Min. 19/32" Plywood	Approved Insulation & Approved Vapor Barrier	20 per 4' x 8' (1 per 1.6 sq. ft.)	IB SD #12 or HD #14, IB 3" Insulation Plate	Approved Cover Board	Approved Insulation Adhesive	Min. Eight Continuous Ribbons, 6" oc.	IB Approved Low Rise Membrane Adhesive
Min. 19/32" Plywood	Approved Insulation & Approved Vapor Barrier	24 per 4' x 8' (1 per 1.3 sq. ft.)	IB SD #12 or HD #14, IB 3" Insulation Plate	Approved Cover Board	Approved Insulation Adhesive	Min. Four Continuous Ribbons, 12" oc.	IB Approved Low Rise Membrane Adhesive
Min. 19/32" Plywood	Approved Insulation & Approved Vapor Barrier	24 per 4' x 8' (1 per 1.3 sq. ft.)	IB SD #12 or HD #14, IB 3" Insulation Plate	Approved Cover Board	Approved Insulation Adhesive	Min. Eight Continuous Ribbons, 6" oc.	IB Approved Low Rise Membrane Adhesive

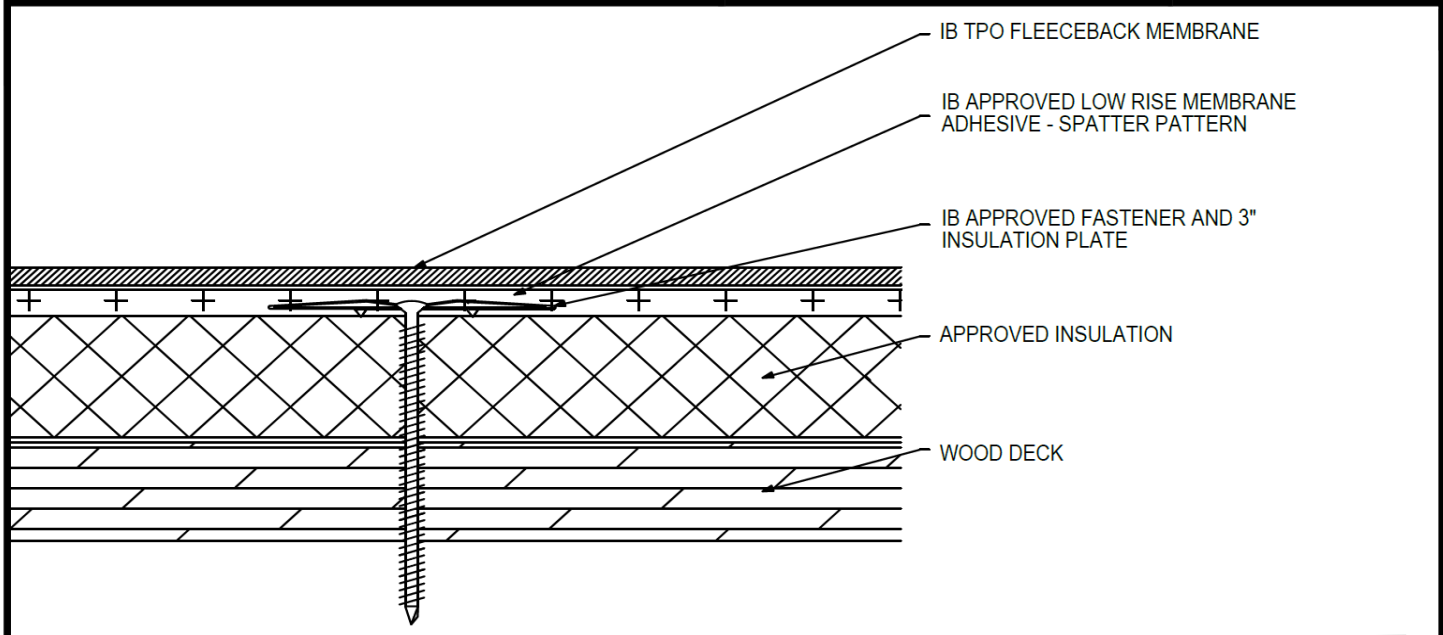
¹Approved Vapor Barrier: IBarrier SA Membrane, IBarrier FG SAR, IBarrier XP SA Membrane, applied using self-adhesive techniques.
²Approved Insulation: IB Energy Board II or III, or IB Approved UL Classified Polyisocyanurate, IB Approved UL Classified Expanded Polystyrene, IB Approved UL Classified Extruded Polystyrene Insulation.
³Approved Cover Board: DensDeck Prime, DensDeck ProFast Prime, DensDeck StormX Prime, Securock Ultralight Coated Glass-Mat, Securock Gypsum Fiber Board, or DEXcell FA Glass Mat Roof Board, minimum 1/4" thickness; or minimum 7/16" DEXcell Cement Roof Board; or minimum 1/2" IB HD ISO-J, or 1/2" IB Recovery Energy Board III-J.
⁴The use of some IB Approved Insulations and/or Cover Boards or combinations thereof may not achieve UL Classification.
⁵Approved Insulation Adhesive: Rapid Set Adhesive, Rapid Set PG Foam, Rapid Set ECO Spray Foam, Millennium One Step, Millennium PG-1 SAF Pump Grade, Millennium PG-1 EF ECO, Millennium PG-1 EF ECO₂, OB500 Adhesive Fastener, OB500 Cannister, or TruFast Roofing Adhesive.
⁶Approved Low Rise Membrane Adhesive: IB Rapid Set ECO₂ Spray Foam, Millennium PG-1 EF ECO₂ Adhesive.
System Uplift Note(s): **Refer to applicable Approval Guide for System Code and/or FM Approvals Information. *Refer to Substrate Resistance Table for required pull-out values.**

For additional information about IB Roof Systems requirements, recommendations, installation details, approvals, and limitations for the above assemblies, please refer to the latest edition of the IB Roof Systems Specifications Manual. For Technical Services please contact IB Technical Department at 800-426-1626.

Membranes:		Membrane Color:		Warranty Length**			Warranty Type**	
IB TPO FB 115 Mil	White*			10 Year	15 Year	20 Year	Contractor Warranty Only	
IB TPO FB 135 Mil	White*			15 Year	20 Year	25 Year	Total Systems - No Dollar Limit (TSW)	
*Meets CRRC, Title 24, LEED (SRI)				**Refer to Warranty Selection Guide for Warranty Riders, Term Length Limitations, and eligibility requirements of the IB Warranty Program			Warranty Plus (WP)	
							Commercial Limited Material Warranty (CLMW)	
							Residential Limited Material Warranty (RLMW)	

Submitted By:		Project Name:	
Company Name:		Address:	
Email/Phone:		City/State:	

Adhered TPO Membrane (SP) - Insulation (MA) - Wood Deck (New or Tear-Off)



Deck Type	Insulation			IB Membrane Securement**
	Type ^{1,2}	Attachment	Fastener/Plate***	Attachment ³
Min. 7/16" OSB	Approved Insulation	12 per 4' x 8' (1 per 2.67 sq. ft.)	IB SD #12 or HD #14, IB 3" Insulation Plate	IB Approved Low Rise Membrane Adhesive
Min. 7/16" OSB	Approved Insulation	16 per 4' x 8' (1 per 2.0 sq. ft.)	IB SD #12 or HD #14, IB 3" Insulation Plate	IB Approved Low Rise Membrane Adhesive
Min. 1/2" Plywood	Approved Insulation	10 per 4' x 8' (1 per 3.2 sq. ft.)	IB SD #12 or HD #14, IB 3" Insulation Plate	IB Approved Low Rise Membrane Adhesive
Min. 1/2" Plywood	Approved Insulation	8 per 4' x 8' (1 per 4.0 sq. ft.)	IB SD #12 or HD #14, IB 3" Insulation Plate	IB Approved Low Rise Membrane Adhesive
Min. 1/2" Plywood	Approved Insulation	10 per 4' x 8' (1 per 3.2 sq. ft.)	IB SD #12 or HD #14, IB 3" Insulation Plate	IB Approved Low Rise Membrane Adhesive
Min. 19/32" Plywood	Approved Insulation	16 per 4' x 8' (1 per 2.0 sq. ft.)	IB SD #12 or HD #14, IB 3" Insulation Plate	IB Approved Low Rise Membrane Adhesive
Min. 19/32" Plywood	Approved Insulation	20 per 4' x 8' (1 per 1.6 sq. ft.)	IB SD #12 or HD #14, IB 3" Insulation Plate	IB Approved Low Rise Membrane Adhesive
Min. 19/32" Plywood	Approved Insulation	24 per 4' x 8' (1 per 1.3 sq. ft.)	IB SD #12 or HD #14, IB 3" Insulation Plate	IB Approved Low Rise Membrane Adhesive

¹Approved Insulation: IB Energy Board II or III, or IB Approved UL Classified Polyisocyanurate.

²The use of some IB Approved Insulations may not achieve UL Classification.

³Approved Low Rise Membrane Adhesive: IB Rapid Set ECO₂ Spray Foam, Millennium PG-1 EF ECO₂ Adhesive.

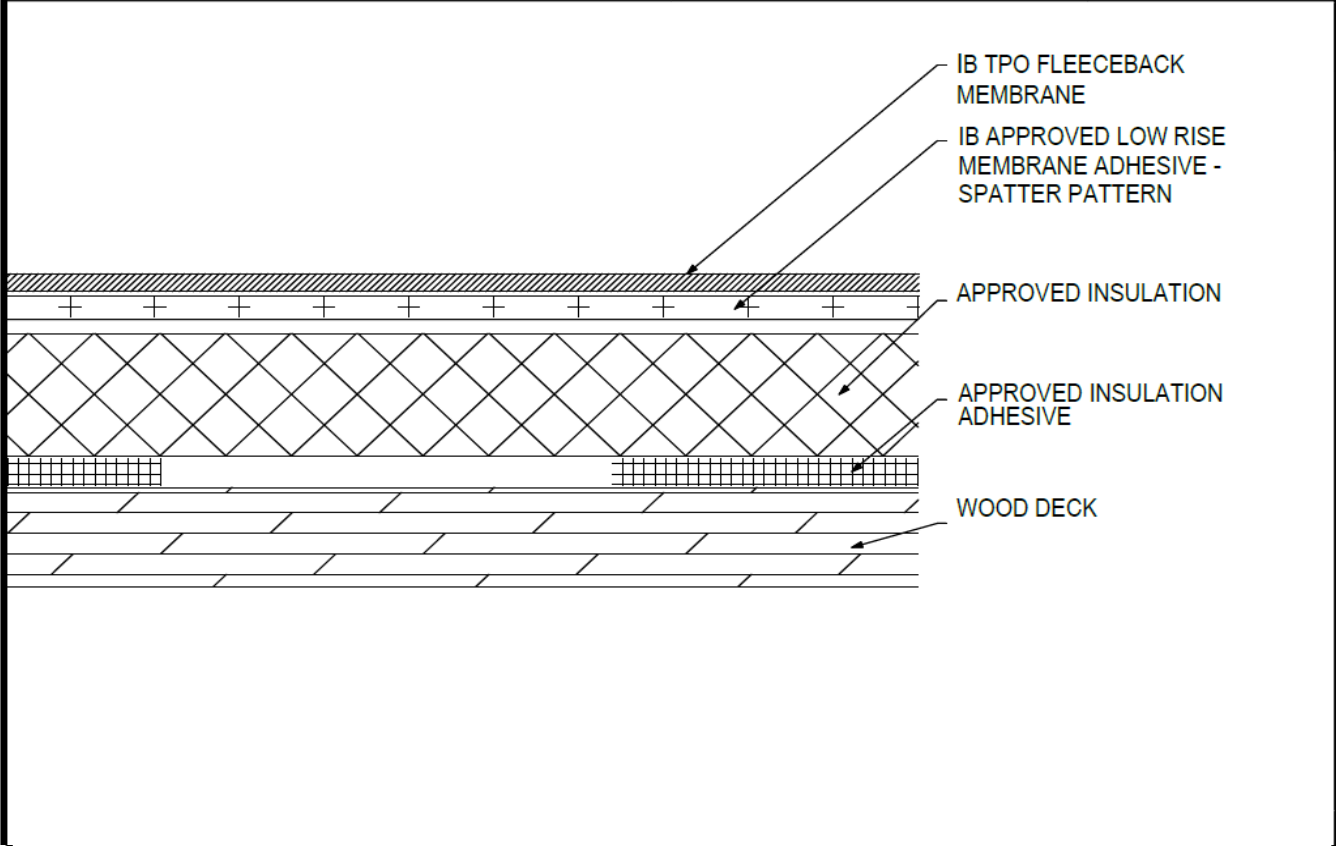
System Uplift Note(s): **Refer to applicable Approval Guide for System Code and/or FM Approvals Information. ***Refer to Substrate Resistance Table for required pull-out values.

For additional information about IB Roof Systems requirements, recommendations, installation details, approvals, and limitations for the above assemblies, please refer to the latest edition of the IB Roof Systems Specifications Manual. For Technical Services please contact IB Technical Department at 800-426-1626.

Membranes:		Membrane Color:		Warranty Length**			Warranty Type**	
IB TPO FB 115 Mil	White*			10 Year	15 Year	20 Year	Contractor Warranty Only	
IB TPO FB 135 Mil	White*			15 Year	20 Year	25 Year	Total Systems - No Dollar Limit (TSW)	
*Meets CRRC, Title 24, LEED (SRI)				**Refer to Warranty Selection Guide for Warranty Riders, Term Length Limitations, and eligibility requirements of the IB Warranty Program			Warranty Plus (WP)	
							Commercial Limited Material Warranty (CLMW)	
							Residential Limited Material Warranty (RLMW)	

Submitted By:		Project Name:	
Company Name:		Address:	
Email/Phone:		City/State:	

Adhered TPO Membrane (SP) - Insulation (RB) - Wood Deck (New or Tear-Off)



Deck Type	Insulation			IB Membrane Securement**
	Type ^{1,2}	Insulation Adhesive ³	Pattern	Attachment ⁴
Min. 7/16" OSB	Approved Insulation	Approved Insulation Adhesive	Min. Four Continuous Ribbons, 12" oc.	IB Approved Low Rise Membrane Adhesive
Min. 1/2" Plywood	Approved Insulation	Approved Insulation Adhesive	Min. Four Continuous Ribbons, 12" oc.	IB Approved Low Rise Membrane Adhesive
Min. 19/32" Plywood	Approved Insulation	Approved Insulation Adhesive	Min. Four Continuous Ribbons, 12" oc.	IB Approved Low Rise Membrane Adhesive

¹Approved Insulation: IB Energy Board II or III, or IB Approved UL Classified Polyisocyanurate.

²The use of some IB Approved Insulations may not achieve UL Classification.

³Approved Insulation Adhesive: Rapid Set Adhesive, Rapid Set PG Foam, Rapid Set ECO Spray Foam, Rapid Set ECO₂ Spray Foam, Millennium One Step, Millennium PG-1 SAF Pump Grade, Millennium PG-1 EF ECO, Millennium PG-1 EF ECO₂, OB500 Adhesive Fastener, OB500 Canister, or TriFast Roofing Adhesive.

⁴Approved Low Rise Membrane Adhesive: IB Rapid Set ECO₂ Spray Foam, Millennium PG-1 EF ECO₂ Adhesive.

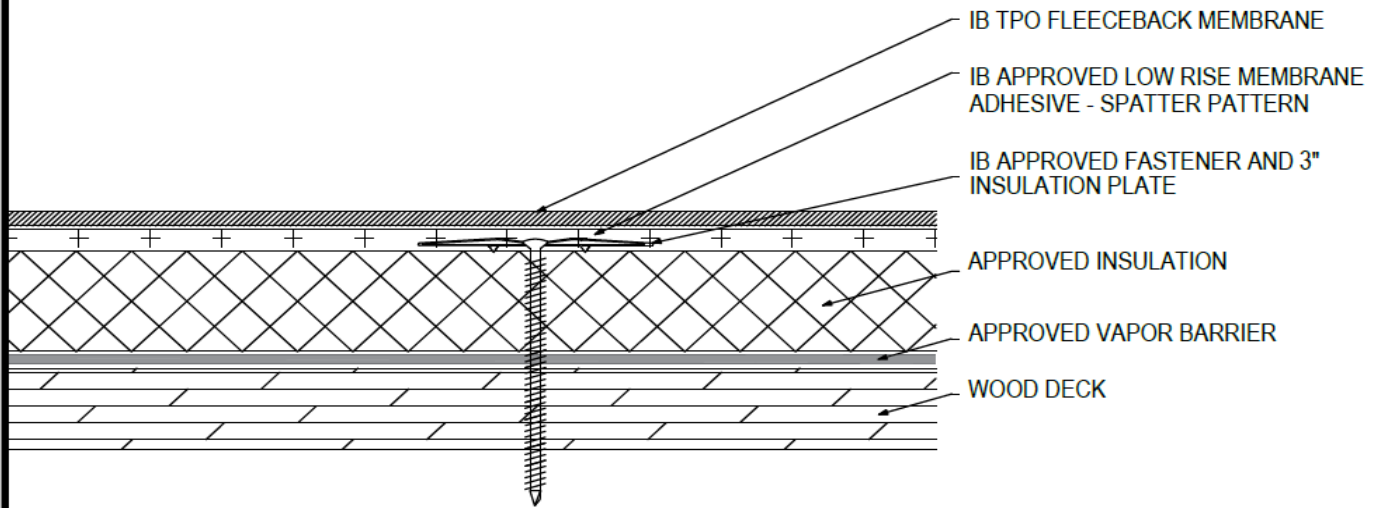
System Uplift Note(s): **Refer to applicable Approval Guide for System Code and/or FM Approvals Information. *Refer to Substrate Resistance Table for required pull-out values.**

For additional information about IB Roof Systems requirements, recommendations, installation details, approvals, and limitations for the above assemblies, please refer to the latest edition of the IB Roof Systems Specifications Manual. For Technical Services please contact IB Technical Department at 800-426-1626.

Membranes:		Membrane Color:		Warranty Length**				Warranty Type**			
<input type="checkbox"/>	IB TPO FB 115 Mil	<input type="checkbox"/>	White*	<input type="checkbox"/>	10 Year	<input type="checkbox"/>	15 Year	<input type="checkbox"/>	20 Year	<input type="checkbox"/>	Contractor Warranty Only
<input type="checkbox"/>	IB TPO FB 135 Mil	<input type="checkbox"/>	White*	<input type="checkbox"/>	15 Year	<input type="checkbox"/>	20 Year	<input type="checkbox"/>	25 Year	<input type="checkbox"/>	Total Systems - No Dollar Limit (TSW)
[*] Meets CRRC, Title 24, LEED (SRI)				^{**} Refer to Warranty Selection Guide for Warranty Riders, Term Length Limitations, and eligibility requirements of the IB Warranty Program				<input type="checkbox"/>			Warranty Plus (WP)
								<input type="checkbox"/>			Commercial Limited Material Warranty (CLMW)
								<input type="checkbox"/>			Residential Limited Material Warranty (RLMW)

Submitted By:		Project Name:	
Company Name:		Address:	
Email/Phone:		City/State:	

Adhered TPO Membrane (SP) - Insulation (MA) - Vapor Barrier - Wood Deck (New or Tear-Off)



Deck Type	Insulation/Vapor Barrier			IB Membrane Securement**
	Type ^{1,2,3}	Attachment	Fastener/Plate***	Type ⁴
Min. 7/16" OSB	Approved Insulation & Approved Vapor Barrier	12 per 4' x 8' (1 per 2.67 sq. ft.)	IB SD #12 or HD #14, IB 3" Insulation Plate	IB Approved Low Rise Membrane Adhesive
Min. 7/16" OSB	Approved Insulation & Approved Vapor Barrier	16 per 4' x 8' (1 per 2.0 sq. ft.)	IB SD #12 or HD #14, IB 3" Insulation Plate	IB Approved Low Rise Membrane Adhesive
Min. 1/2" Plywood	Approved Insulation & Approved Vapor Barrier	8 per 4' x 8' (1 per 4.0 sq. ft.)	IB SD #12 or HD #14, IB 3" Insulation Plate	IB Approved Low Rise Membrane Adhesive
Min. 1/2" Plywood	Approved Insulation & Approved Vapor Barrier	10 per 4' x 8' (1 per 3.2 sq. ft.)	IB SD #12 or HD #14, IB 3" Insulation Plate	IB Approved Low Rise Membrane Adhesive
Min. 1/2" Plywood	Approved Insulation & Approved Vapor Barrier	12 per 4' x 8' (1 per 2.67 sq. ft.)	IB SD #12 or HD #14, IB 3" Insulation Plate	IB Approved Low Rise Membrane Adhesive
Min. 19/32" Plywood	Approved Insulation & Approved Vapor Barrier	16 per 4' x 8' (1 per 2.0 sq. ft.)	IB SD #12 or HD #14, IB 3" Insulation Plate	IB Approved Low Rise Membrane Adhesive
Min. 19/32" Plywood	Approved Insulation & Approved Vapor Barrier	20 per 4' x 8' (1 per 1.6 sq. ft.)	IB SD #12 or HD #14, IB 3" Insulation Plate	IB Approved Low Rise Membrane Adhesive
Min. 19/32" Plywood	Approved Insulation & Approved Vapor Barrier	24 per 4' x 8' (1 per 1.3 sq. ft.)	IB SD #12 or HD #14, IB 3" Insulation Plate	IB Approved Low Rise Membrane Adhesive

¹Approved Vapor Barrier: IBarrier SA Membrane, IBarrier FG SAR, IBarrier XP SA Membrane, applied using self-adhesive techniques.

²Approved Insulation: IB Energy Board II or III, or IB Approved UL Classified Polyisocyanurate.

³The use of some IB Approved Insulations may not achieve UL Classification.

⁴Approved Low Rise Membrane Adhesive: IB Rapid Set ECO₂ Spray Foam, Millennium PG-1 EF ECO₂ Adhesive.

System Uplift Note(s): **Refer to applicable Approval Guide for System Code and/or FM Approvals Information. ***Refer to Substrate Resistance Table for required pull-out values.

For additional information about IB Roof Systems requirements, recommendations, installation details, approvals, and limitations for the above assemblies, please refer to the latest edition of the IB Roof Systems Specifications Manual. For Technical Services please contact IB Technical Department at 800-426-1626.

Membranes:	Membrane Color:	Warranty Length**			Warranty Type**
IB TPO FB 115 Mil	White*	10 Year	15 Year	20 Year	Contractor Warranty Only
IB TPO FB 135 Mil	White*	15 Year	20 Year	25 Year	Total Systems - No Dollar Limit (TSW)
*Meets CRRC, Title 24, LEED (SRI)		**Refer to Warranty Selection Guide for Warranty Riders, Term Length Limitations, and eligibility requirements of the IB Warranty Program			Warranty Plus (WP)
					Commercial Limited Material Warranty (CLMW)
					Residential Limited Material Warranty (RLMW)

Submitted By:		Project Name:	
Company Name:		Address:	
Email/Phone:		City/State:	