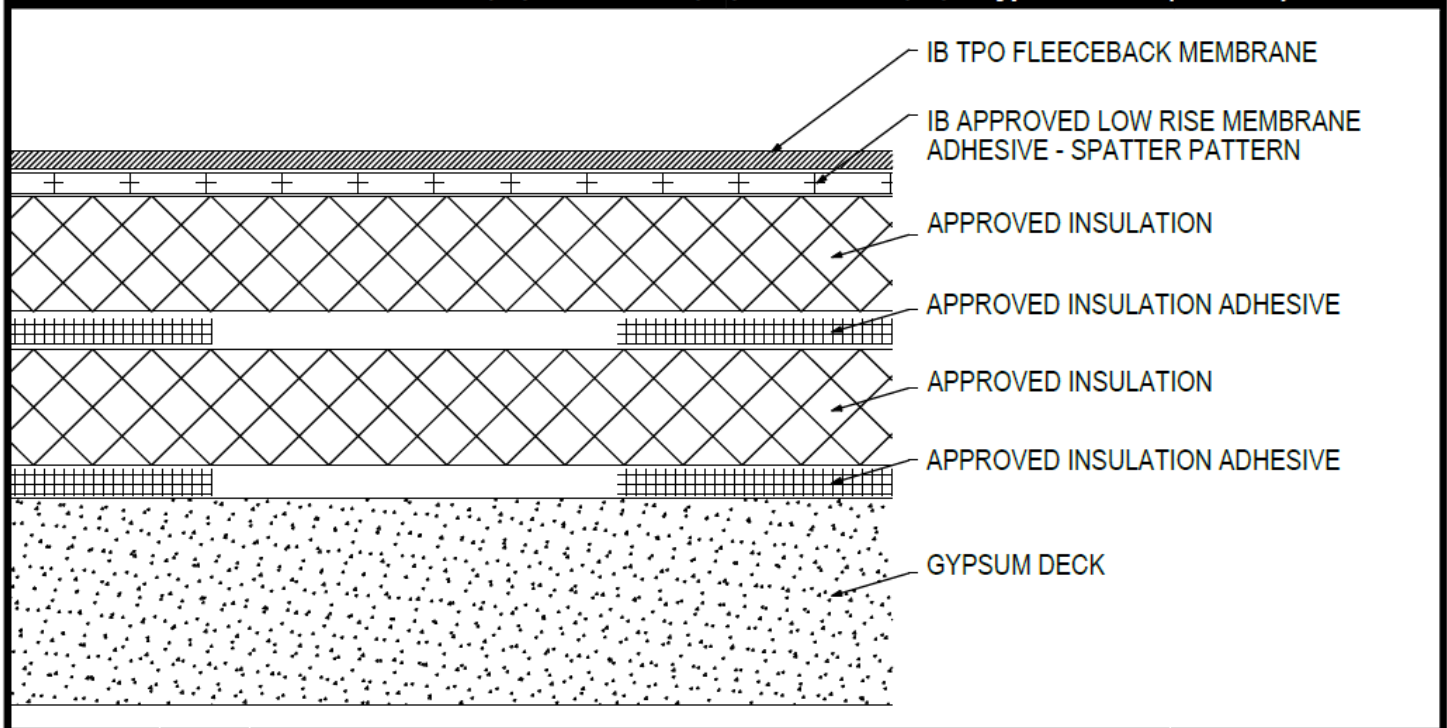


**Adhered TPO Membrane (SP) - Insulation (RB) - Insulation (RB) - Gypsum Deck (Tear-Off)**



Deck Type	Insulation			Insulation			IB TPO Fleeceback Membrane Securement** Attachment <sup>4,5</sup>
	Type <sup>1,2</sup>	Attachment <sup>3</sup>	Pattern <sup>***</sup>	Type <sup>1,2</sup>	Attachment <sup>3</sup>	Pattern <sup>***</sup>	
Poured Gypsum	Approved Insulation	Approved Insulation Adhesive	Continuous Ribbons, 12" oc.	Approved Insulation	Approved Insulation Adhesive	Continuous Ribbons, 12" oc.	IB Approved Low Rise Membrane Adhesive
Poured Gypsum	Approved Insulation	Approved Insulation Adhesive	Continuous Ribbons, 6" oc.	Approved Insulation	Approved Insulation Adhesive	Continuous Ribbons, 6" oc.	IB Approved Low Rise Membrane Adhesive

<sup>1</sup>Approved Insulation: IB Energy Board II or III, or IB Approved UL Classified Polyisocyanurate, IB Approved UL Classified Expanded Polystyrene, IB Approved UL Classified Extruded Polystyrene Insulation.

<sup>2</sup>The use of some IB Approved Insulations or combinations thereof may not achieve UL Classification.

<sup>3</sup>Approved Insulation Adhesive: Rapid Set Adhesive, Rapid Set PG Foam, Rapid Set ECO Spray Foam, Millennium One Step, Millennium PG-1 SAF Pump Grade, Millennium PG-1 EF ECO, Millennium PG-1 EF ECO<sub>2</sub>, OB500 Adhesive Fastener, OB500 Cannister, or TruFast Roofing Adhesive.

<sup>4</sup>Approved Low Rise Membrane Adhesive: IB Rapid Set ECO<sub>2</sub> Spray Foam, Millennium PG-1 EF ECO<sub>2</sub> Adhesive.

<sup>5</sup>The use of some IB Approved Low Rise Membrane Adhesives may not achieve UL Classification

**System Uplift Note(s): \*\*Refer to applicable Approval Guide for System Code and/or FM Approvals Information. \*\*\*Refer to Substrate Resistance Table for required pull-out values.**

For additional information about IB Roof Systems requirements, recommendations, installation details, approvals, and limitations for the above assemblies, please refer to the latest edition of the IB Roof Systems Specifications Manual. For Technical Services please contact IB Technical Department at 800-426-1626.

Membranes:	Membrane Color:	Warranty Length**			Warranty Type**
IB TPO FB 115 Mil	White*	10 Year	15 Year	20 Year	Contractor Warranty Only
IB TPO FB 135 Mil	White*	15 Year	20 Year	25 Year	Total Systems - No Dollar Limit (TSW)
					Warranty Plus (WP)
					Commercial Limited Material Warranty (CLMW)
					Residential Limited Material Warranty (RLMW)

\*Meets CRRC, Title 24, LEED (SRI)

\*\*Refer to Warranty Selection Guide for Warranty Riders, Term Length Limitations, and eligibility requirements of the IB Warranty Program

Submitted By:		Project Name:	
Company Name:		Address:	
Email/Phone:		City/State:	