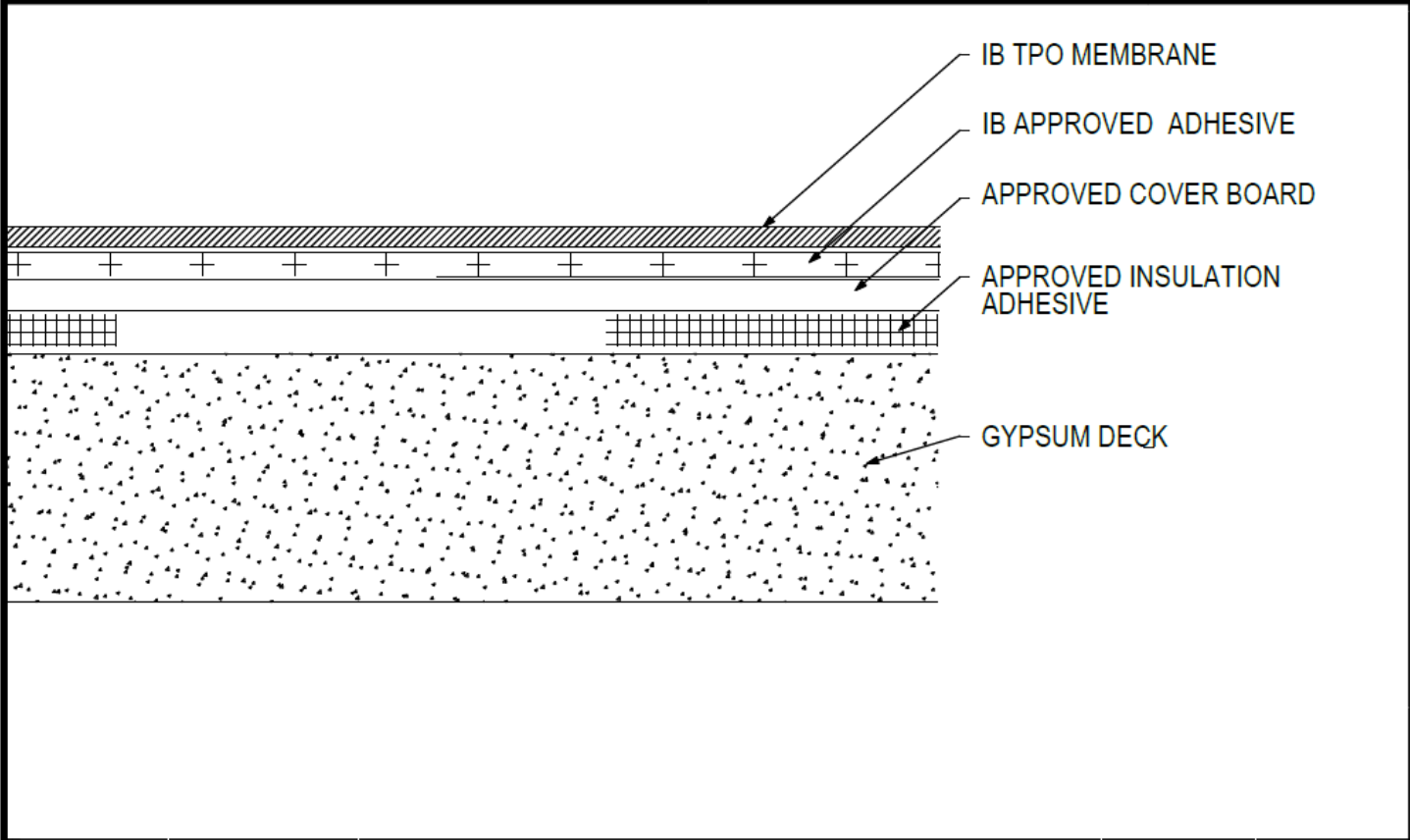


Adhered TPO Membrane - Cover Board (RB) - Gypsum Deck (Tear-Off)



Deck Type	Cover Board			IB Membrane Securement**
	Type ^{1,2}	Insulation Adhesive ³	Pattern ^{***}	
Poured Gypsum	Approved Cover Board	Approved Insulation Adhesive	Continuous Ribbons, 12" oc.	IB Approved Adhesive
Poured Gypsum	Approved Cover Board	Approved Insulation Adhesive	Continuous Ribbons, 6" oc.	IB Approved Adhesive

¹Approved Cover Board: DensDeck Prime, DensDeck StormX Prime, Securock Ultralight Coated Glass-Mat, Securock Gypsum Fiber Board, or DEXcell FA Glass Mat Roof Board, minimum 1/4" thickness; or minimum 7/16" DEXcell Cement Roof Board; or minimum 1/2" IB HD ISO-J, or 1/2" IB Recovery Energy Board III-J.

²The use of some IB Approved Cover Boards may not achieve UL Classification.

³Approved Insulation Adhesive: Rapid Set Adhesive, Rapid Set PG Foam, Rapid Set ECO Spray Foam, Rapid Set ECO₂ Spray Foam, Millennium One Step, Millennium PG-1 SAF Pump Grade, Millennium PG-1 EF ECO, Millennium PG-1 EF ECO₂, OB500 Adhesive Fastener, OB500 Cannister, or TruFast Roofing Adhesive.

⁴Approved Membrane Adhesive: IB TPO Water Based Adhesive, IB TPO Bonding Adhesive, IB TPO LVOC Adhesive, IB TPO CA LVOC Adhesive, or IB TPO Spray Contact Adhesive.

Note: IB TPO Bonding Adhesive, IB TPO LVOC Adhesive and IB TPO CA LVOC Adhesive cannot be used with IB TPO FB Membranes.

System Uplift Note(s): **Refer to applicable Approval Guide for System Code and/or FM Approvals Information. ***Refer to Substrate Resistance Table for required pull-out values.

For additional information about IB Roof Systems requirements, recommendations, installation details, approvals, and limitations for the above assemblies, please refer to the latest edition of the IB Roof Systems Specifications Manual. For Technical Services please contact IB Technical Department at 800-426-1626.

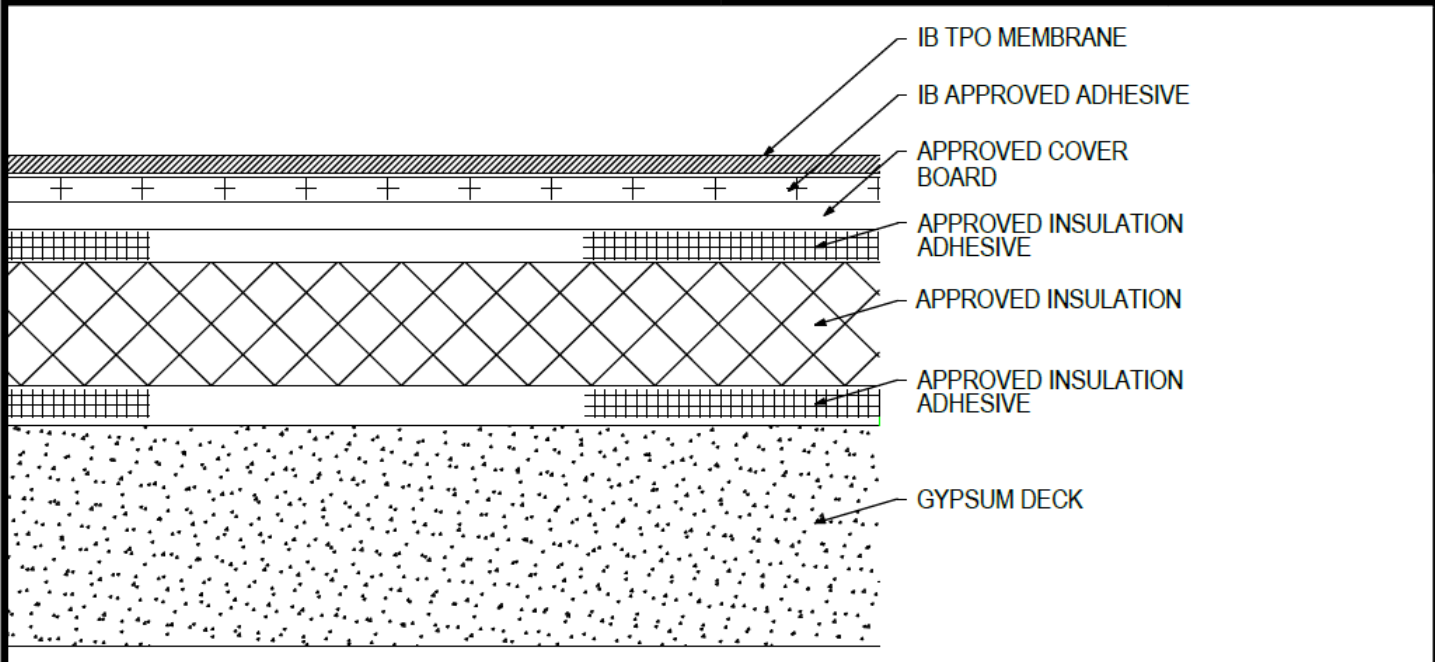
Membranes:		Membrane Color:			Warranty Length**			Warranty Type**	
IB TPO SM 60 Mil		White*	Gray	Tan	10 Year	15 Year	20 Year	Contractor Warranty Only	
IB TPO SM 80 Mil		White*	Gray	Tan	15 Year	20 Year	25 Year	Total Systems - No Dollar Limit (TSW)	
IB TPO FB 115 Mil		White*			10 Year	15 Year	20 Year	Warranty Plus (WP)	
IB TPO FB 135 Mil		White*			15 Year	20 Year	25 Year	Commercial Limited Material Warranty (CLMW)	
								Residential Limited Material Warranty (RLMW)	

*Meets CRRC, Title 24, LEED (SRI)

**Refer to Warranty Selection Guide for Warranty Riders, Term Length Limitations, and eligibility requirements of the IB Warranty Program

Submitted By:		Project Name:	
Company Name:		Address:	
Email/Phone:		City/State:	

Adhered TPO Membrane - Cover Board (RB) - Insulation (RB) - Gypsum Deck (Tear-Off)



Deck Type	Insulation			Cover Board			IB Membrane Securement**
	Type ^{1,3}	Attachment	Fastener/Plate***	Type ^{2,3}	Adhesive Type ⁴	Pattern***	Attachment ⁵
Poured Gypsum	Approved Insulation	Approved Insulation Adhesive	Continuous Ribbons, 12" oc.	Approved Cover Board	Approved Insulation Adhesive	Continuous Ribbons, 12" oc.	IB Approved Adhesive
Poured Gypsum	Approved Insulation	Approved Insulation Adhesive	Continuous Ribbons, 6" oc.	Approved Cover Board	Approved Insulation Adhesive	Continuous Ribbons, 6" oc.	IB Approved Adhesive

¹Approved Insulation: IB Energy Board II or III, or IB Approved UL Classified Polyisocyanurate, IB Approved UL Classified Expanded Polystyrene, IB Approved UL Classified Extruded Polystyrene Insulation.
²Approved Cover Board: DensDeck Prime, DensDeck StormX Prime, Securock Ultralight Coated Glass-Mat, Securock Gypsum Fiber Board, or DEXcell FA Glass Mat Roof Board, minimum 1/4" thickness; or minimum 7/16" DEXcell Cement Roof Board; or minimum 1/2" IB HD ISO-J, or 1/2" IB Recovery Energy Board III-J.
³The use of some IB Approved Insulations and/or Cover Boards or combinations thereof may not achieve UL Classification.
⁴Approved Insulation Adhesive: Rapid Set Adhesive, Rapid Set PG Foam, Rapid Set ECO Spray Foam, Rapid Set ECO₂ Spray Foam, Millennium One Step, Millennium PG-1 SAF Pump Grade, Millennium PG-1 EF ECO, Millennium PG-1 EF ECO₂, OB500 Adhesive Fastener, OB500 Cannister, or TruFast Roofing Adhesive.
⁵Approved Adhesive: IB TPO Water Based Adhesive, IB TPO Bonding Adhesive, IB TPO LVOC Adhesive, IB TPO CA LVOC Adhesive, or IB TPO Spray Contact Adhesive.
Note: IB TPO Bonding Adhesive, IB TPO LVOC Adhesive and IB TPO CA LVOC Adhesive cannot be used with IB TPO FB Membranes.
System Uplift Note(s): **Refer to applicable Approval Guide for System Code and/or FM Approvals Information. *Refer to Substrate Resistance Table for required pull-out values.**
For additional information about IB Roof Systems requirements, recommendations, installation details, approvals, and limitations for the above assemblies, please refer to the latest edition of the IB Roof Systems Specifications Manual. For Technical Services please contact IB Technical Department at 800-426-1626.

Membranes:	Membrane Color:	Warranty Length**	Warranty Type**
IB TPO SM 60 Mil	White* Gray Tan	10 Year 15 Year 20 Year	Contractor Warranty Only
IB TPO SM 80 Mil	White* Gray Tan	15 Year 20 Year 25 Year	Total Systems - No Dollar Limit (TSW)
IB TPO FB 115 Mil	White*	10 Year 15 Year 20 Year	Warranty Plus (WP)
IB TPO FB 135 Mil	White*	15 Year 20 Year 25 Year	Commercial Limited Material Warranty (CLMW) Residential Limited Material Warranty (RLMW)

*Meets CRRC, Title 24, LEED (SRI)

**Refer to Warranty Selection Guide for Warranty Riders, Term Length Limitations, and eligibility requirements of the IB Warranty Program

Submitted By:	Project Name:
Company Name:	Address:
Email/Phone:	City/State: