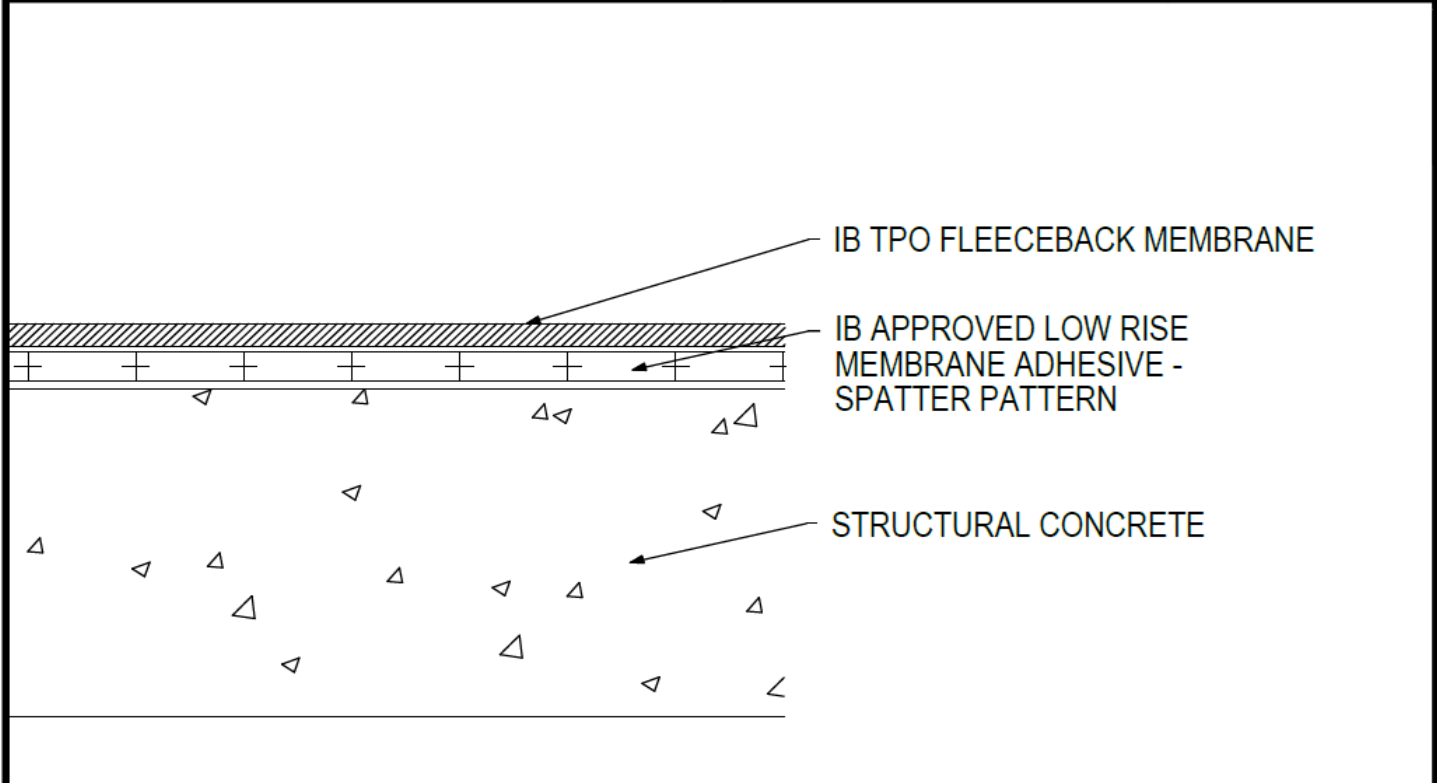


Adhered TPO Membrane (SP) - Concrete Deck (New or Tear Off)



Deck Type	IB TPO Fleeceback Membrane Attachment ^{1,2}
Structural Concrete	IB Approved Low Rise Membrane Adhesive

¹Approved Low Rise Membrane Adhesive: IB Rapid Set ECO₂ Spray Foam, Millennium PG-1 EF ECO₂ Adhesive.

²The use of some IB Approved Low Rise Membrane Adhesives may not achieve UL Classification.

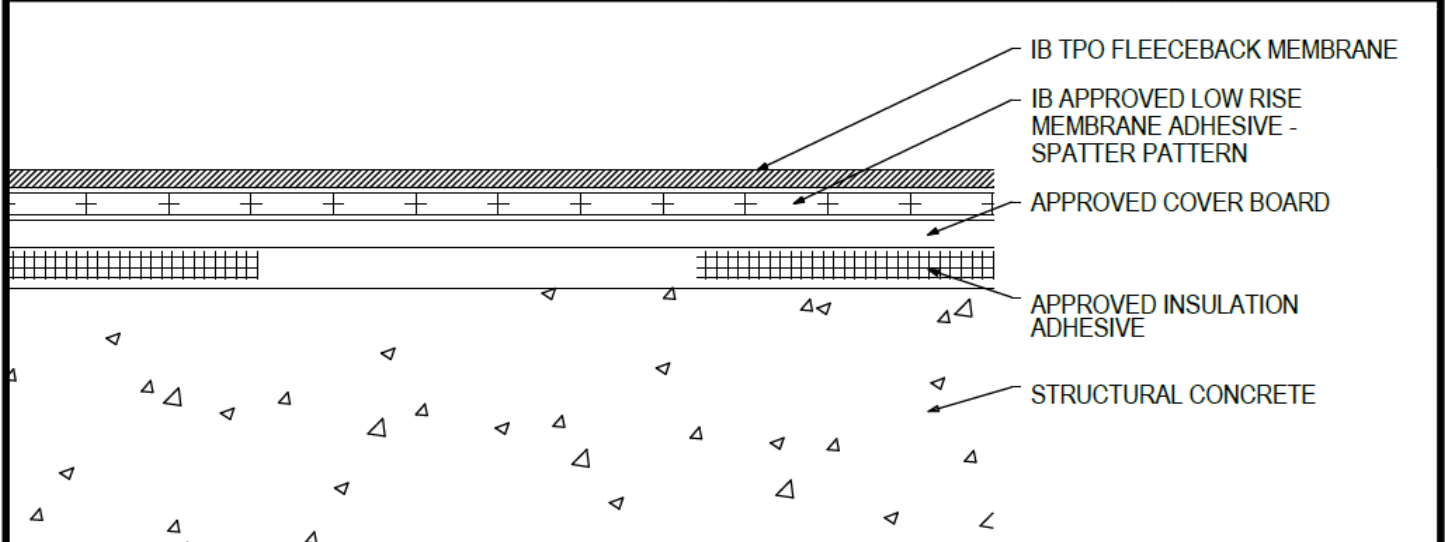
System Uplift Note(s): **Refer to applicable Approval Guide for System Code and/or FM Approvals Information. ***Refer to Substrate Resistance Table for required pull-out values.

For additional information about IB Roof Systems requirements, recommendations, installation details, approvals, and limitations for the above assemblies, please refer to the latest edition of the IB Roof Systems Specifications Manual. For Technical Services please contact IB Technical Department at 800-426-1626.

Membranes:	Membrane Color:	Warranty Length**			Warranty Type**
IB TPO FB 115 Mil	White*	10 Year	15 Year	20 Year	Contractor Warranty Only
IB TPO FB 135 Mil	White*	15 Year	20 Year	25 Year	Total Systems - No Dollar Limit (TSW)
*Meets CRRC, Title 24, LEED (SRI)		**Refer to Warranty Selection Guide for Warranty Riders, Term Length Limitations, and eligibility requirements of the IB Warranty Program			Warranty Plus (WP)
					Commercial Limited Material Warranty (CLMW)
					Residential Limited Material Warranty (RLMW)

Submitted By:		Project Name:	
Company Name:		Address:	
Email/Phone:		City/State:	

Adhered TPO Membrane (SP) - Cover Board (RB) - Concrete Deck (New or Tear-Off)



Deck Type	Cover Board			IB TPO Fleeceback Membrane Securement**
	Type ^{1,2}	Insulation Adhesive ³	Pattern ^{***}	
Structural Concrete	Approved Cover Board	Approved Insulation Adhesive	Continuous Ribbons, 12" oc.	IB Approved Low Rise Membrane Adhesive
Structural Concrete	Approved Cover Board	Approved Insulation Adhesive	Continuous Ribbons, 6" oc.	IB Approved Low Rise Membrane Adhesive

¹**Approved Cover Board:** DensDeck Prime, DensDeck StormX Prime, Securock Ultralight Coated Glass-Mat, Securock Gypsum Fiber Board, or DEXcell FA Glass Mat Roof Board, minimum 1/2" thickness; or minimum 7/16" DEXcell Cement Roof Board; or minimum 1/2" IB HD ISO-J, or 1/2" IB Recovery Energy Board III-J.

²The use of some IB Approved Cover Boards may not achieve UL Classification.

³**Approved Insulation Adhesive:** Rapid Set Adhesive, Rapid Set PG Foam, Rapid Set ECO Spray Foam, Rapid Set ECO₂ Spray Foam, Millennium One Step, Millennium PG-1 SAF Pump Grade, Millennium PG-1 EF ECO, Millennium PG-1 EF ECO₂, OB500 Adhesive Fastener, OB500 Cannister, or TruFast Roofing Adhesive.

⁴**Approved Low Rise Membrane Adhesive:** IB Rapid Set ECO₂ Spray Foam, Millennium PG-1 EF ECO₂ Adhesive.

⁵The use of some IB Approved Low Rise Membrane Adhesives may not achieve UL Classification.

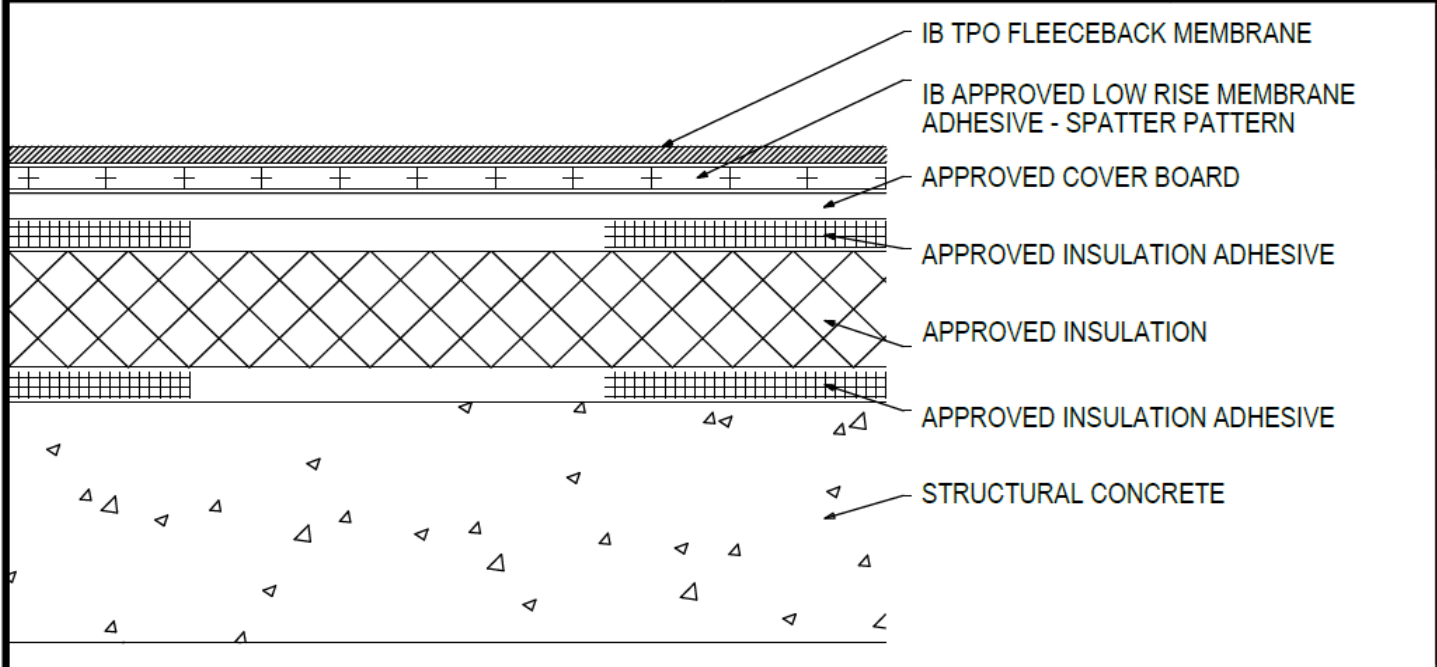
System Uplift Note(s): **Refer to applicable Approval Guide for System Code and/or FM Approvals Information. ***Refer to Substrate Resistance Table for required pull-out values.

For additional information about IB Roof Systems requirements, recommendations, installation details, approvals, and limitations for the above assemblies, please refer to the latest edition of the IB Roof Systems Specifications Manual. For Technical Services please contact IB Technical Department at 800-426-1626.

Membranes:		Membrane Color:		Warranty Length**			Warranty Type**	
IB TPO FB 115 Mil	White*	10 Year	15 Year	20 Year	Contractor Warranty Only Total Systems - No Dollar Limit (TSW) Warranty Plus (WP) Commercial Limited Material Warranty (CLMW) Residential Limited Material Warranty (RLMW)			
IB TPO FB 135 Mil	White*	15 Year	20 Year	25 Year				
*Meets CRRC, Title 24, LEED (SRI)								
**Refer to Warranty Selection Guide for Warranty Riders, Term Length Limitations, and eligibility requirements of the IB Warranty Program								

Submitted By:	Project Name:
Company Name:	Address:
Email/Phone:	City/State:

Adhered TPO Membrane (SP) - Cover Board (RB) - Insulation (RB) - Concrete Deck (New or Tear-Off)



Deck Type	Insulation			Cover Board			IB Membrane Securement**
	Type ^{1,3}	Attachment	Pattern***	Type ^{2,3}	Adhesive Type ⁴	Pattern***	Attachment ^{5,6}
Structural Concrete	Approved Insulation	Approved Insulation Adhesive	Continuous Ribbons, 12" oc.	Approved Cover Board	Approved Insulation Adhesive	Continuous Ribbons, 12" oc.	IB Approved Low Rise Membrane Adhesive
Structural Concrete	Approved Insulation	Approved Insulation Adhesive	Continuous Ribbons, 6" oc.	Approved Cover Board	Approved Insulation Adhesive	Continuous Ribbons, 6" oc.	IB Approved Low Rise Membrane Adhesive

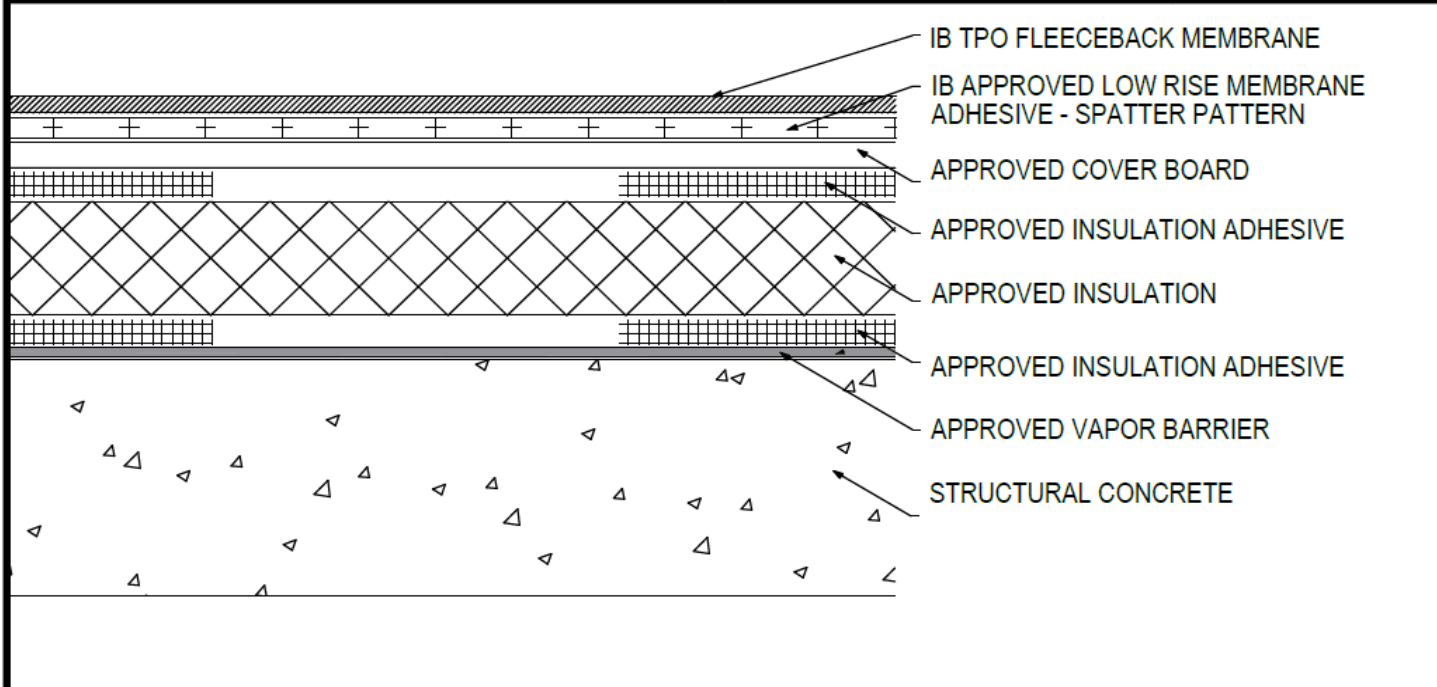
¹Approved Insulation: IB Energy Board II or III, or IB Approved UL Classified Polyisocyanurate, IB Approved UL Classified Expanded Polystyrene, IB Approved UL Classified Extruded Polystyrene Insulation.
²Approved Cover Board: DensDeck Prime, DensDeck StormX Prime, Securock Ultralight Coated Glass-Mat, Securock Gypsum Fiber Board, or DEXcell FA Glass Mat Roof Board, minimum 1/4" thickness; or minimum 7/16" DEXcell Cement Roof Board; or minimum 1/2" IB HD ISO-J, or 1/2" IB Recovery Energy Board III-J.
³The use of some IB Approved Insulations and/or Cover Boards or combinations thereof may not achieve UL Classification.
⁴Approved Insulation Adhesive: Rapid Set Adhesive, Rapid Set PG Foam, Rapid Set ECO Spray Foam, Rapid Set ECO₂ Spray Foam, Millennium One Step, Millennium PG-1 SAF Pump Grade, Millennium PG-1 EF ECO, Millennium PG-1 EF ECO₂, OB500 Adhesive Fastener, OB500 Cannister, or TruFast Roofing Adhesive.
⁵Approved Low Rise Membrane Adhesive: IB Rapid Set ECO₂ Spray Foam, Millennium PG-1 EF ECO₂ Adhesive.
⁶The use of some IB Approved Low Rise Membrane Adhesives may not achieve UL Classification.
System Uplift Note(s): **Refer to applicable Approval Guide for System Code and/or FM Approvals Information. *Refer to Substrate Resistance Table for required pull-out values.**

For additional information about IB Roof Systems requirements, recommendations, installation details, approvals, and limitations for the above assemblies, please refer to the latest edition of the IB Roof Systems Specifications Manual. For Technical Services please contact IB Technical Department at 800-426-1626.

Membranes:		Membrane Color:		Warranty Length**			Warranty Type**	
IB TPO FB 115 Mil		White*		10 Year	15 Year	20 Year	Contractor Warranty Only Total Systems - No Dollar Limit (TSW) Warranty Plus (WP) Commercial Limited Material Warranty (CLMW) Residential Limited Material Warranty (RLMW)	
IB TPO FB 135 Mil		White*		15 Year	20 Year	25 Year		
[*] Meets CRRC, Title 24, LEED (SRI)				^{**} Refer to Warranty Selection Guide for Warranty Riders, Term Length Limitations, and eligibility requirements of the IB Warranty Program				

Submitted By:		Project Name:	
Company Name:		Address:	
Email/Phone:		City/State:	

Adhered TPO Membrane (SP) - Cover Board (RB) - Insulation (RB) - Vapor Barrier - Concrete Deck (New or Tear Off)



Deck Type	Vapor Barrier/Insulation			Cover Board			IB TPO Fleeceback Membrane Securement**
	Type ^{1,2,4}	Attachment ⁵	Pattern ^{***}	Type ^{3,4}	Attachment ⁵	Pattern ^{***}	Attachment ^{6,7}
Structural Concrete	Approved Vapor Barrier & Approved Insulation	Approved Insulation Adhesive	Continuous Ribbons, 12" oc.	Approved Cover Board	Approved Insulation Adhesive	Continuous Ribbons, 12" oc.	IB Approved Low Rise Membrane Adhesive
Structural Concrete	Approved Vapor Barrier & Approved Insulation	Approved Insulation Adhesive	Continuous Ribbons, 6" oc.	Approved Cover Board	Approved Insulation Adhesive	Continuous Ribbons, 6" oc.	IB Approved Low Rise Membrane Adhesive

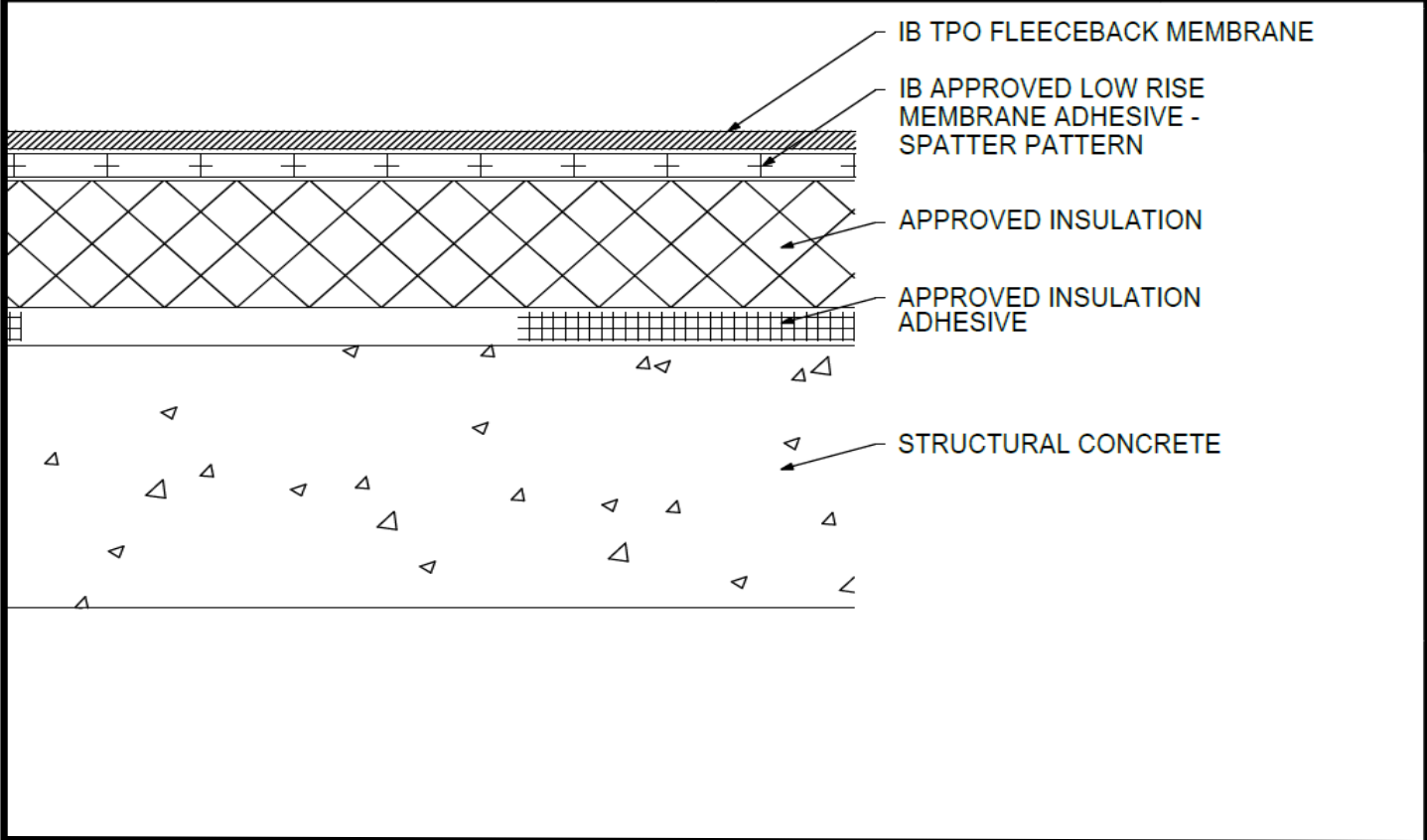
¹Approved Vapor Barrier: IBarrier SA Membrane, IBarrier FG SAR, IBarrier XP SA Membrane, applied using self-adhesive techniques. IBarrier 90G TG SBS, IBarrier 120G TG SBS, IBarrier 120P TG SGS, applied over asphalt primed substrate using torch welding techniques.
²Approved Insulation: IB Energy Board II or III, or IB Approved UL Classified Polyisocyanurate, IB Approved UL Classified Expanded Polystyrene, IB Approved UL Classified Extruded Polystyrene Insulation.
³Approved Cover Board: DensDeck Prime, DensDeck StormX Prime, Securock Ultralight Coated Glass-Mat, Securock Gypsum Fiber Board, or DEXcell FA Glass Mat Roof Board, minimum 1/4" thickness; or minimum 7/16" DEXcell Cement Roof Board; or minimum 1/2" IB HD ISO-J, or 1/2" IB Recovery Energy Board III-J.
⁴The use of some IB Approved Insulations and/or Cover Boards or combinations thereof may not achieve UL Classification.
⁵Approved Insulation Adhesive: Rapid Set Adhesive, Rapid Set PG Foam, Rapid Set ECO Spray Foam, Millennium One Step, Millennium PG-1 SAF Pump Grade, Millennium PG-1 EF ECO, Millennium PG-1 EF ECO₂, OB500 Adhesive Fastener, OB500 Cannister, or TruFast Roofing Adhesive.
⁶Approved Low Rise Membrane Adhesive: IB Rapid Set ECO₂ Spray Foam, Millennium PG-1 EF ECO₂ Adhesive.
⁷The use of some IB Approved Low Rise Membrane Adhesives may not achieve UL Classification.

System Uplift Note(s): **Refer to applicable Approval Guide for System Code and/or FM Approvals Information. *Refer to Substrate Resistance Table for required pull-out values.**
 For additional information about IB Roof Systems requirements, recommendations, installation details, approvals, and limitations for the above assemblies, please refer to the latest edition of the IB Roof Systems Specifications Manual. For Technical Services please contact IB Technical Department at 800-426-1626.

Membranes:		Membrane Color:	Warranty Length**				Warranty Type**
IB TPO FB 115 Mil	White*		10 Year	15 Year	20 Year	Contractor Warranty Only	
IB TPO FB 135 Mil	White*		15 Year	20 Year	25 Year	Total Systems - No Dollar Limit (TSW)	
*Meets CRRC, Title 24, LEED (SRI)			**Refer to Warranty Selection Guide for Warranty Riders, Term Length Limitations, and eligibility requirements of the IB Warranty Program			Warranty Plus (WP)	
						Commercial Limited Material Warranty (CLMW)	
						Residential Limited Material Warranty (RLMW)	

Submitted By:	Project Name:
Company Name:	Address:
Email/Phone:	City/State:

Adhered TPO Membrane (SP) - Insulation (RB) - Concrete Deck (New or Tear Off)



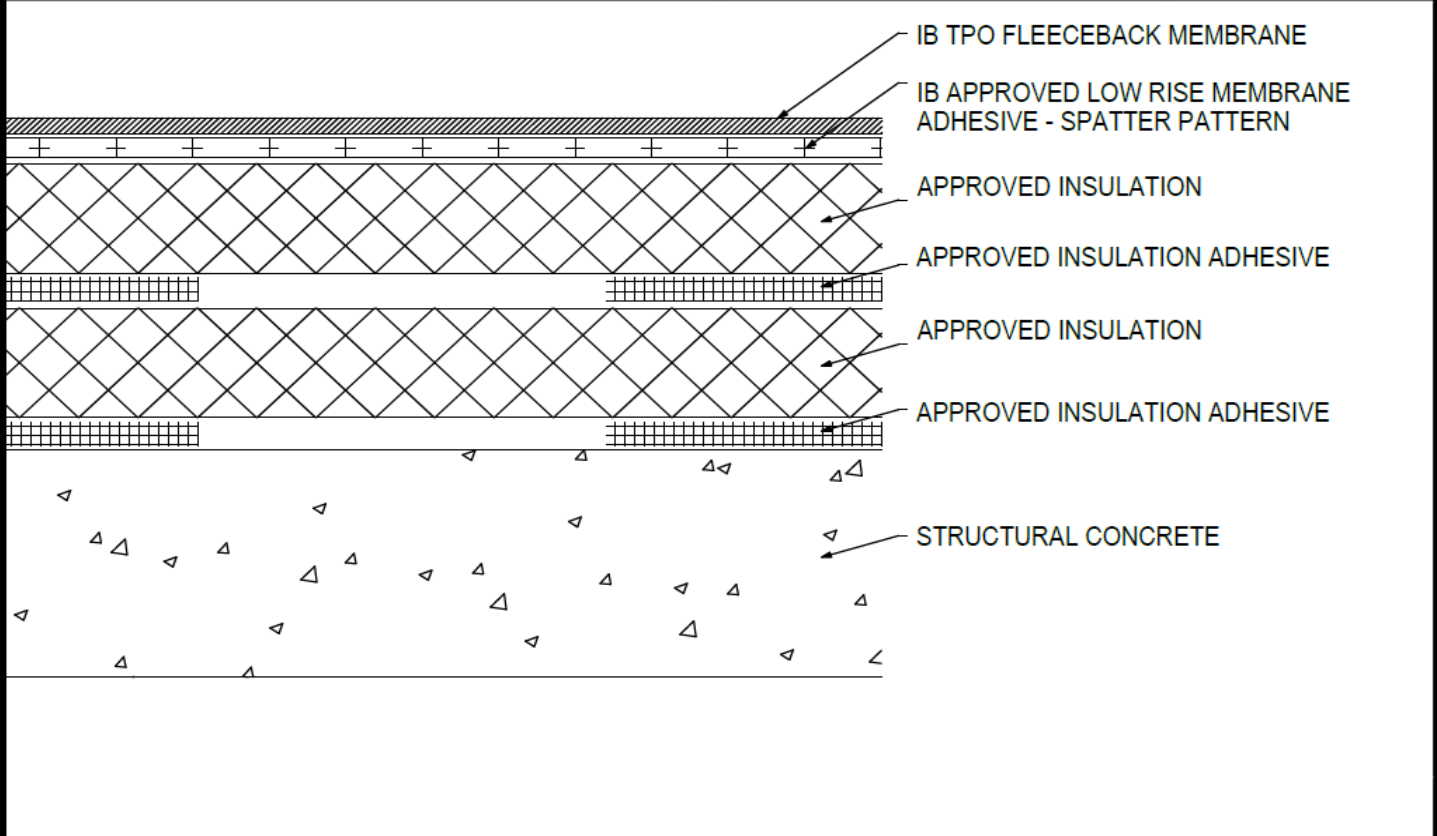
Deck Type	Insulation			IB TPO Fleeceback Membrane Securement**
	Type ^{1,2}	Insulation Adhesive ³	Pattern ^{***}	Attachment ⁴
Structural Concrete	Approved Insulation	Approved Insulation Adhesive	Continuous Ribbons, 12" oc.	IB Approved Low Rise Membrane Adhesive
Structural Concrete	Approved Insulation	Approved Insulation Adhesive	Continuous Ribbons, 6" oc.	IB Approved Low Rise Membrane Adhesive

¹Approved Insulation: IB Energy Board II or III, or IB Approved UL Classified Polyisocyanurate
²The use of some IB Approved Insulations may not achieve UL Classification.
³Approved Insulation Adhesive: Rapid Set Adhesive, Rapid Set PG Foam, Rapid Set ECO Spray Foam, Rapid Set ECO₂ Spray Foam, Millennium One Step, Millennium PG-1 SAF Pump Grade, Millennium PG-1 EF ECO, Millennium PG-1 EF ECO₂, OB500 Adhesive Fastener, OB500 Cannister, or TruFast Roofing Adhesive
⁴Approved Low Rise Membrane Adhesive: IB Rapid Set ECO₂ Spray Foam, Millennium PG-1 EF ECO₂ Adhesive.
⁵The use of some IB Approved Low Rise Membrane Adhesives may not achieve UL Classification
System Uplift Note(s): **Refer to applicable Approval Guide for System Code and/or FM Approvals Information. *Refer to Substrate Resistance Table for required pull-out values.**
 For additional information about IB Roof Systems requirements, recommendations, installation details, approvals, and limitations for the above assemblies, please refer to the latest edition of the IB Roof Systems Specifications Manual. For Technical Services please contact IB Technical Department at 800-426-1626.

Membranes:		Membrane Color:		Warranty Length**			Warranty Type**	
IB TPO FB 115 Mil	White*			10 Year	15 Year	20 Year	Contractor Warranty Only Total Systems - No Dollar Limit (TSW) Warranty Plus (WP) Commercial Limited Material Warranty (CLMW) Residential Limited Material Warranty (RLMW)	
IB TPO FB 135 Mil	White*			15 Year	20 Year	25 Year		
[*] Meets CRRC, Title 24, LEED (SRI)				^{**} Refer to Warranty Selection Guide for Warranty Riders, Term Length Limitations, and eligibility requirements of the IB Warranty Program				

Submitted By:		Project Name:	
Company Name:		Address:	
Email/Phone:		City/State:	

Adhered TPO Membrane (SP) - Insulation (RB) - Insulation (RB) - Concrete Deck (New or Tear-Off)

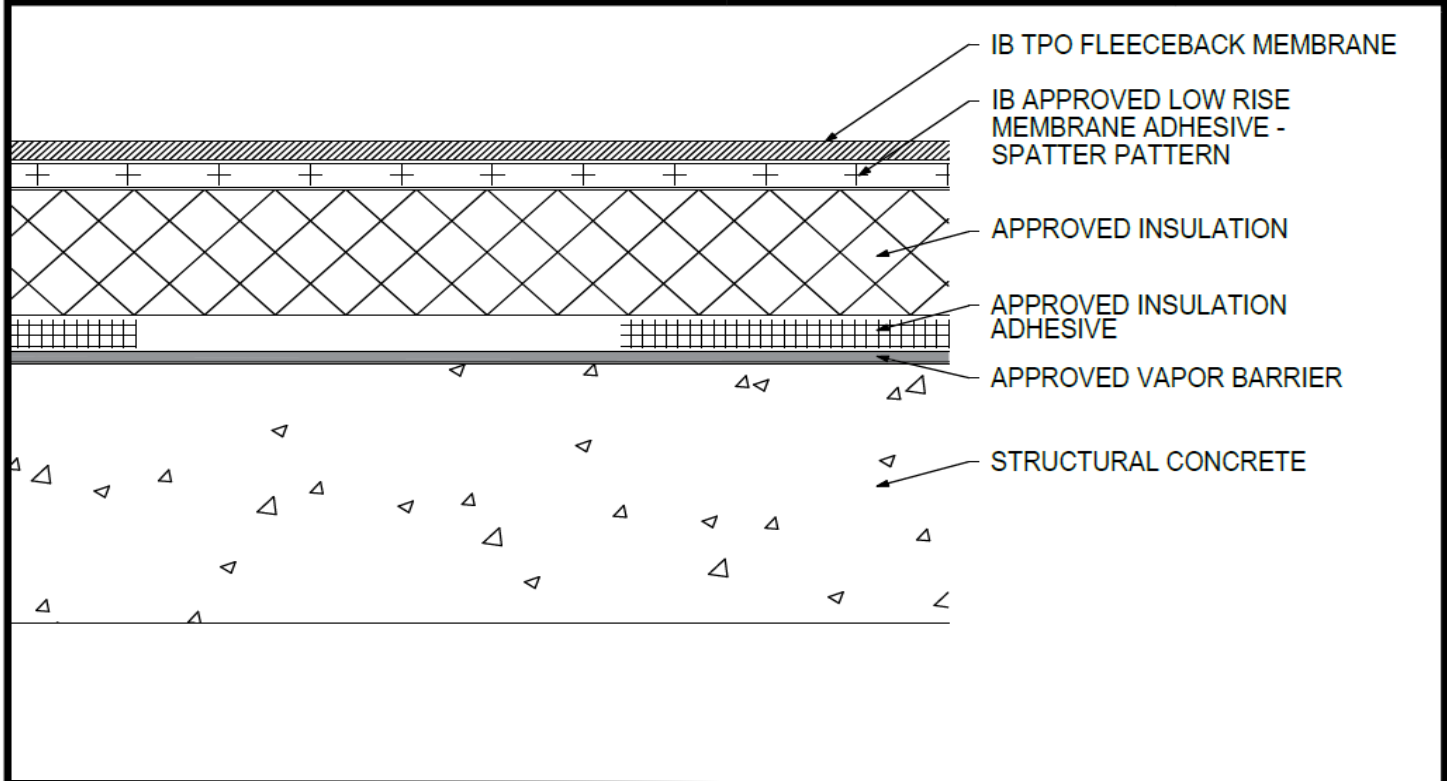


Deck Type	Insulation			Insulation			IB TPO Fleeceback Membrane Securement**
	Type ^{1,2}	Attachment ³	Pattern ^{***}	Type ^{1,2}	Attachment ³	Pattern ^{***}	Attachment ^{4,5}
Structural Concrete	Approved Insulation	Approved Insulation Adhesive	Continuous Ribbons, 12" oc.	Approved Insulation	Approved Insulation Adhesive	Continuous Ribbons, 12" oc.	IB Approved Low Rise Membrane Adhesive
Structural Concrete	Approved Insulation	Approved Insulation Adhesive	Continuous Ribbons, 6" oc.	Approved Insulation	Approved Insulation Adhesive	Continuous Ribbons, 6" oc.	IB Approved Low Rise Membrane Adhesive

¹Approved Insulation: IB Energy Board II or III, or IB Approved UL Classified Polyisocyanurate, IB Approved UL Classified Expanded Polystyrene, IB Approved UL Classified Extruded Polystyrene Insulation.
²The use of some IB Approved Insulations or combinations thereof may not achieve UL Classification.
³Approved Insulation Adhesive: Rapid Set Adhesive, Rapid Set PG Foam, Rapid Set ECO Spray Foam, Rapid Set ECO₂ Spray Foam, Millennium One Step, Millennium PG-1 SAF Pump Grade, Millennium PG-1 EF ECO, Millennium PG-1 EF ECO₂, OB500 Adhesive Fastener, OB500 Cannister, or TruFast Roofing Adhesive.
⁴Approved Low Rise Membrane Adhesive: IB Rapid Set ECO₂ Spray Foam, Millennium PG-1 EF ECO₂ Adhesive.
⁵The use of some IB Approved Low Rise Membrane Adhesives may not achieve UL Classification.
System Uplift Note(s): **Refer to applicable Approval Guide for System Code and/or FM Approvals Information. *Refer to Substrate Resistance Table for required pull-out values.**
For additional information about IB Roof Systems requirements, recommendations, installation details, approvals, and limitations for the above assemblies, please refer to the latest edition of the IB Roof Systems Specifications Manual. For Technical Services please contact IB Technical Department at 800-426-1626.

Membranes:		Membrane Color:		Warranty Length**			Warranty Type**	
IB TPO FB 115 Mil	White*			10 Year	15 Year	20 Year	Contractor Warranty Only Total Systems - No Dollar Limit (TSW) Warranty Plus (WP) Commercial Limited Material Warranty (CLMW) Residential Limited Material Warranty (RLMW)	
IB TPO FB 135 Mil	White*			15 Year	20 Year	25 Year		
[*] Meets CRRC, Title 24, LEED (SRI)				^{**} Refer to Warranty Selection Guide for Warranty Riders, Term Length Limitations, and eligibility requirements of the IB Warranty Program				

Submitted By:	Project Name:
Company Name:	Address:
Email/Phone:	City/State:

Adhered TPO Membrane (SP) - Insulation (RB) - Vapor Barrier - Concrete Deck (New or Tear Off)


Deck Type	Vapor Barrier/Insulation				IB TPO Fleeceback Membrane Securement**
	Vapor Barrier ¹	Type ^{2,3}	Insulation Adhesive ⁴	Pattern	Attachment ⁵
Structural Concrete	Approved Vapor Barrier	Approved Insulation	Approved Insulation Adhesive	Continuous Ribbons, 12" oc.	IB Approved Low Rise Membrane Adhesive
Structural Concrete	Approved Vapor Barrier	Approved Insulation	Approved Insulation Adhesive	Continuous Ribbons, 6" oc.	IB Approved Low Rise Membrane Adhesive

¹Approved Vapor Barrier: IBarrier SA Membrane, IBarrier FG SAR, IBarrier XP SA Membrane, applied using self-adhesive techniques.
²Approved Insulation: IB Energy Board II or III, or IB Approved UL Classified Polyisocyanurate
³The use of some IB Approved Insulations may not achieve UL Classification.
⁴Approved Insulation Adhesive: Rapid Set Adhesive, Rapid Set PG Foam, Rapid Set ECO Spray Foam, Rapid Set ECO₂ Spray Foam, Millennium One Step, Millennium PG-1 SAF Pump Grade, Millennium PG-1 EF ECO, Millennium PG-1 EF ECO₂, OB500 Adhesive Fastener, OB500 Cannister, or TruFast Roofing Adhesive.
⁵Approved Low Rise Membrane Adhesive: IB Rapid Set ECO₂ Spray Foam, Millennium PG-1 EF ECO₂ Adhesive.
⁶The use of some IB Approved Low Rise Membrane Adhesives may not achieve UL Classification
System Uplift Note(s): **Refer to applicable Approval Guide for System Code and/or FM Approvals Information. *Refer to Substrate Resistance Table for required pull-out values.**

For additional information about IB Roof Systems requirements, recommendations, installation details, approvals, and limitations for the above assemblies, please refer to the latest edition of the IB Roof Systems Specifications Manual. For Technical Services please contact IB Technical Department at 800-426-1626.

Membranes:		Membrane Color:		Warranty Length**				Warranty Type**	
IB TPO FB 115 Mil	White*			10 Year	15 Year	20 Year		Contractor Warranty Only	
IB TPO FB 135 Mil	White*			15 Year	20 Year	25 Year		Total Systems - No Dollar Limit (TSW)	
*Meets CRRC, Title 24, LEED (SRI)				**Refer to Warranty Selection Guide for Warranty Riders, Term Length Limitations, and eligibility requirements of the IB Warranty Program					Warranty Plus (WP)
									Commercial Limited Material Warranty (CLMW)
									Residential Limited Material Warranty (RLMW)

Submitted By:		Project Name:	
Company Name:		Address:	
Email/Phone:		City/State:	