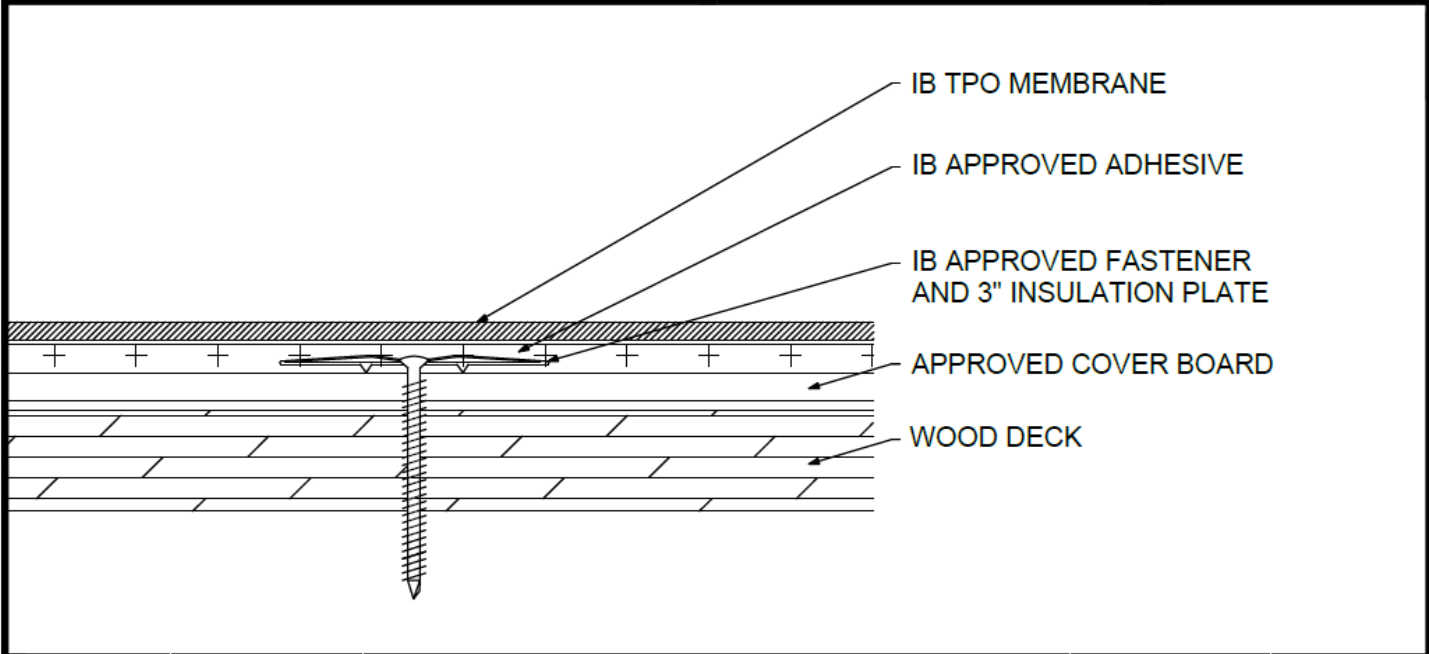


**Adhered TPO Membrane - Cover Board (MA) - Wood Deck (New or Tear-Off)**



Deck Type	Cover Board			IB Membrane Securement**
	Type <sup>1,2</sup>	Attachment	Fastener/Plate***	Attachment <sup>3</sup>
Min. 7/16" OSB	Approved Cover Board	12 per 4' x 8' (1 per 2.67 sq. ft.)	IB SD #12 or HD #14, IB 3" Insulation Plate	IB Approved Adhesive
Min. 7/16" OSB	Approved Cover Board	16 per 4' x 8' (1 per 2.0 sq. ft.)	IB SD #12 or HD #14, IB 3" Insulation Plate	IB Approved Adhesive
Min. 1/2" Plywood	Approved Cover Board	8 per 4' x 8' (1 per 4.0 sq. ft.)	IB SD #12 or HD #14, IB 3" Insulation Plate	IB Approved Adhesive
Min. 1/2" Plywood	Approved Cover Board	10 per 4' x 8' (1 per 3.2 sq. ft.)	IB SD #12 or HD #14, IB 3" Insulation Plate	IB Approved Adhesive
Min. 19/32" Plywood	Approved Cover Board	16 per 4' x 8' (1 per 2.0 sq. ft.)	IB SD #12 or HD #14, IB 3" Insulation Plate	IB Approved Adhesive
Min. 19/32" Plywood	Approved Cover Board	20 per 4' x 8' (1 per 1.6 sq. ft.)	IB SD #12 or HD #14, IB 3" Insulation Plate	IB Approved Adhesive
Min. 19/32" Plywood	Approved Cover Board	24 per 4' x 8' (1 per 1.3 sq. ft.)	IB SD #12 or HD #14, IB 3" Insulation Plate	IB Approved Adhesive

<sup>1</sup>Approved Cover Board: DensDeck Prime, DensDeck ProFast Prime, DensDeck StormX Prime, Securock Ultralight Coated Glass-Mat, Securock Gypsum Fiber Board, or DEXcell FA Glass Mat Roof Board, minimum 1/4" thickness; or minimum 7/16" DEXcell Cement Roof Board; or minimum 1/2" IB HD ISO-J, or 1/2" IB Recovery Energy Board III-J.

<sup>2</sup>The use of some IB Approved Cover Boards may not achieve UL Classification.

<sup>3</sup>Approved Adhesive: IB TPO Water Based Adhesive, IB TPO Bonding Adhesive, IB TPO LVOC Adhesive, IB TPO CA LVOC Adhesive, or IB TPO Spray Contact Adhesive.

Note: IB TPO Bonding Adhesive, IB TPO LVOC Adhesive, and IB TPO CA LVOC Adhesive cannot be used with IB TPO FB Membranes.

System Uplift Note(s): \*\*Refer to applicable Approval Guide for System Code and/or FM Approvals Information. \*\*\*Refer to Substrate Resistance Table for required pull-out values.

For additional information about IB Roof Systems requirements, recommendations, installation details, approvals, and limitations for the above assemblies, please refer to the latest edition of the IB Roof Systems Specifications Manual. For Technical Services please contact IB Technical Department at 800-426-1626.

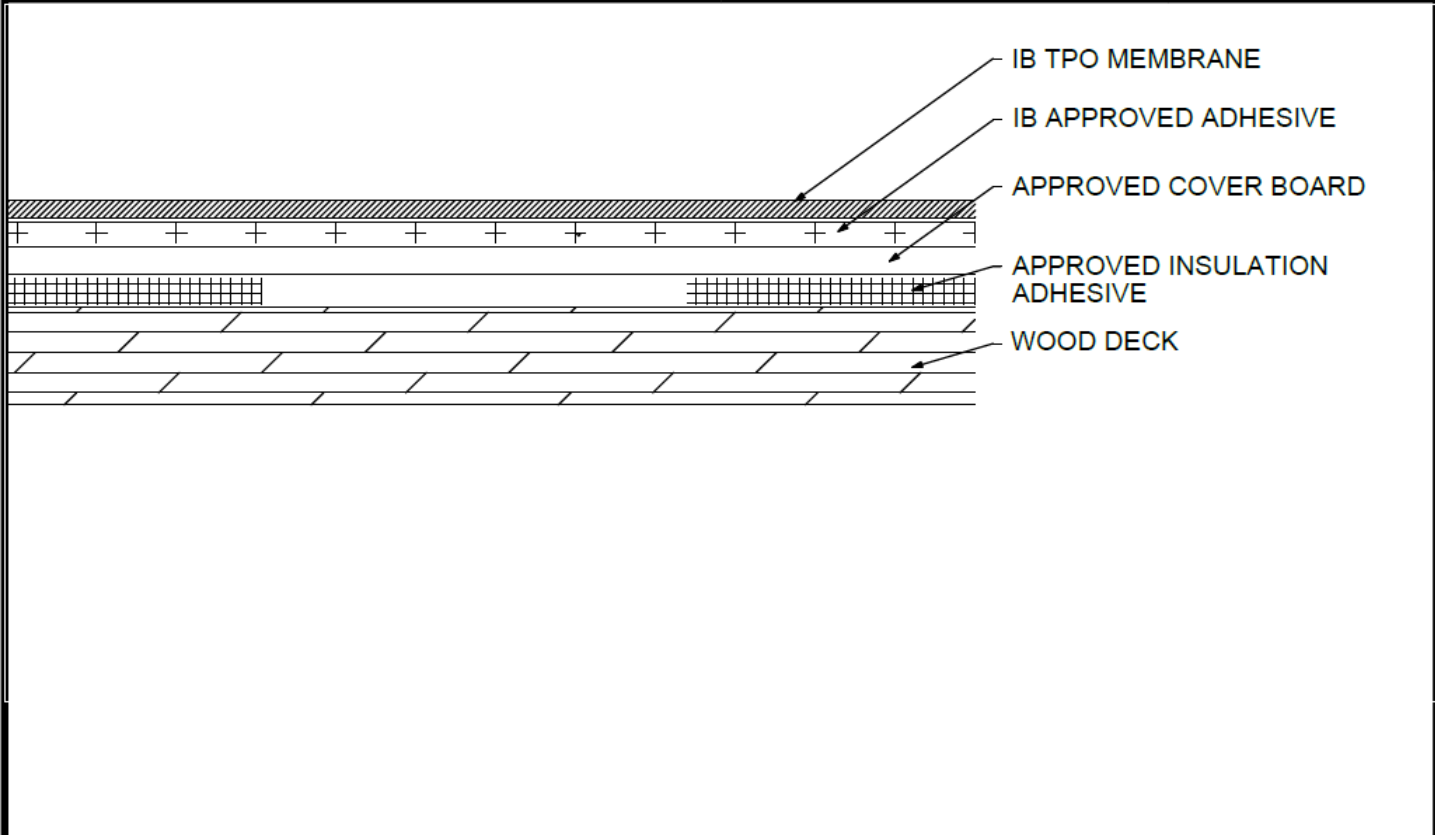
Membranes:	Membrane Color:	Warranty Length**	Warranty Type**
IB TPO SM 60 Mil	White* Gray Tan	10 Year 15 Year 20 Year	Contractor Warranty Only
IB TPO SM 80 Mil	White* Gray Tan	15 Year 20 Year 25 Year	Total Systems - No Dollar Limit (TSW)
IB TPO FB 115 Mil	White*	10 Year 15 Year 20 Year	Warranty Plus (WP)
IB TPO FB 135 Mil	White*	15 Year 20 Year 25 Year	Commercial Limited Material Warranty (CLMW) Residential Limited Material Warranty (RLMW)

\*Meets CRRC, Title 24, LEED (SRI)

\*\*Refer to Warranty Selection Guide for Warranty Riders, Term Length Limitations, and eligibility requirements of the IB Warranty Program

Submitted By:	Project Name:
Company Name:	Address:
Email/Phone:	City/State:

**Adhered TPO Membrane - Cover Board (RB) - Wood Deck (New or Tear-Off)**



Deck Type	Cover Board			IB Membrane Securement**
	Type <sup>1,2</sup>	Insulation Adhesive <sup>3</sup>	Pattern <sup>***</sup>	
Min. 7/16" OSB	Approved Cover Board	Approved Insulation Adhesive	Min. Four Continuous Ribbons, 12" oc.	IB Approved Adhesive
Min. 1/2" Plywood	Approved Cover Board	Approved Insulation Adhesive	Min. Four Continuous Ribbons, 12" oc.	IB Approved Adhesive
Min. 19/32" Plywood	Approved Cover Board	Approved Insulation Adhesive	Min. Four Continuous Ribbons, 12" oc.	IB Approved Adhesive

<sup>1</sup>Approved Cover Board: DensDeck Prime, DensDeck StormX Prime, Securock Ultralight Coated Glass-Mat, Securock Gypsum Fiber Board, or DEXcell FA Glass Mat Roof Board, minimum 1/4" thickness; or minimum 7/16" DEXcell Cement Roof Board; or minimum 1/2" IB HD ISO-J, or 1/2" IB Recovery Energy Board III-J.

<sup>2</sup>The use of some IB Approved Cover Boards may not achieve UL Classification.

<sup>3</sup>Approved Insulation Adhesive: Rapid Set Adhesive, Rapid Set PG Foam, Rapid Set ECO Spray Foam, Rapid Set ECO<sub>2</sub> Spray Foam, Millennium One Step, Millennium PG-1 SAF Pump Grade, Millennium PG-1 EF ECO, Millennium PG-1 EF ECO<sub>2</sub>, OB500 Adhesive Fastener, OB500 Cannister, or TruFast Roofing Adhesive.

<sup>4</sup>Approved Membrane Adhesive: IB TPO Water Based Adhesive, IB TPO Bonding Adhesive, IB TPO LVOC Adhesive, IB TPO CA LVOC Adhesive, or IB TPO Spray Contact Adhesive.

Note: IB TPO Bonding Adhesive, IB TPO LVOC Adhesive, and IB TPO CA LVOC Adhesive cannot be used with IB TPO FB Membranes.

System Uplift Note(s): \*\*Refer to applicable Approval Guide for System Code and/or FM Approvals Information. \*\*\*Refer to Substrate Resistance Table for required pull-out values.

For additional information about IB Roof Systems requirements, recommendations, installation details, approvals, and limitations for the above assemblies, please refer to the latest edition of the IB Roof Systems Specifications Manual. For Technical Services please contact IB Technical Department at 800-426-1626.

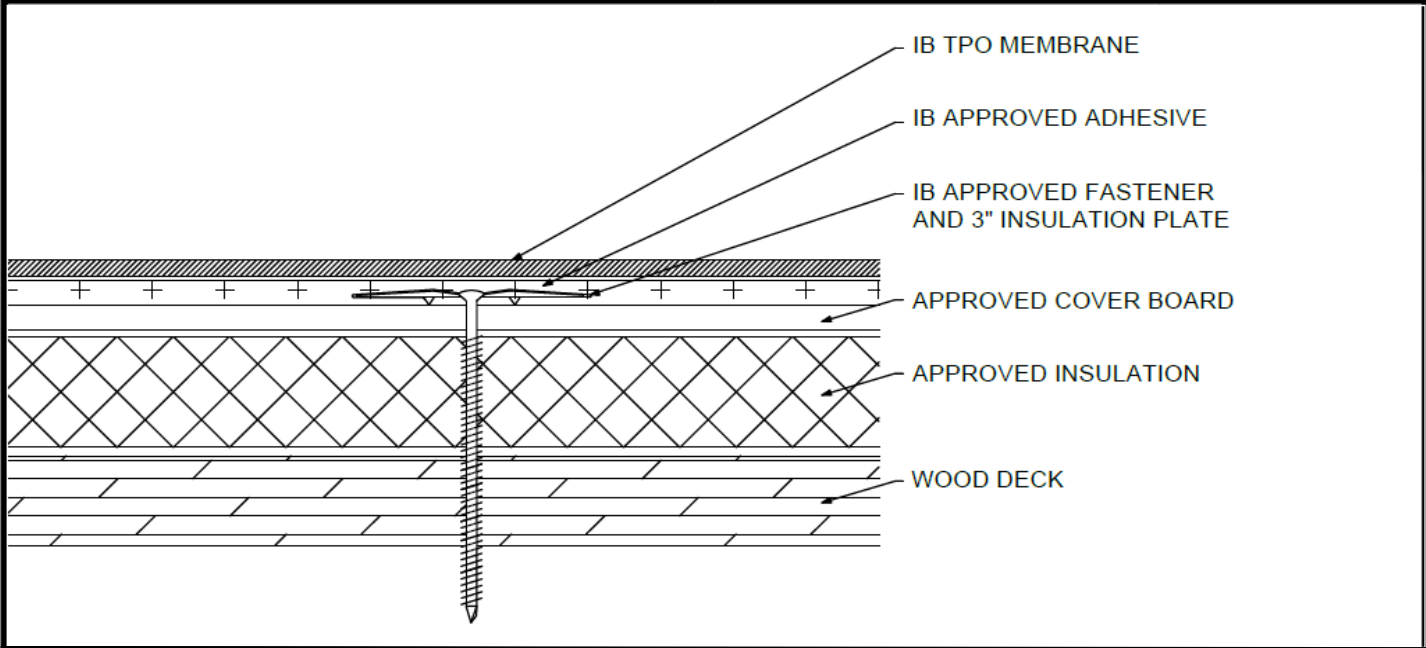
Membranes:		Membrane Color:			Warranty Length**			Warranty Type**	
IB TPO SM 60 Mil	White*	Gray	Tan	10 Year	15 Year	20 Year	Contractor Warranty Only		
IB TPO SM 80 Mil	White*	Gray	Tan	15 Year	20 Year	25 Year	Total Systems - No Dollar Limit (TSW)		
IB TPO FB 115 Mil	White*			10 Year	15 Year	20 Year	Warranty Plus (WP)		
IB TPO FB 135 Mil	White*			15 Year	20 Year	25 Year	Commercial Limited Material Warranty (CLMW)		
							Residential Limited Material Warranty (RLMW)		

\*Meets CRRC, Title 24, LEED (SRI)

\*\*Refer to Warranty Selection Guide for Warranty Riders, Term Length Limitations, and eligibility requirements of the IB Warranty Program

Submitted By:		Project Name:	
Company Name:		Address:	
Email/Phone:		City/State:	

**Adhered TPO Membrane - Cover Board (MA) - Insulation (MA) - Wood Deck (New or Tear-Off)**



Deck Type	Insulation/Cover Board			IB Membrane Securement**
	Type <sup>1,2,3</sup>	Attachment	Fastener/Plate***	Attachment <sup>4</sup>
Min. 7/16" OSB	Approved Insulation & Approved Cover Board	12 per 4' x 8' (1 per 2.67 sq. ft.)	IB SD #12 or HD #14, IB 3" Insulation Plate	IB Approved Adhesive
Min. 7/16" OSB	Approved Insulation & Approved Cover Board	16 per 4' x 8' (1 per 2.0 sq. ft.)	IB SD #12 or HD #14, IB 3" Insulation Plate	IB Approved Adhesive
Min. 1/2" Plywood	Approved Insulation & Approved Cover Board	8 per 4' x 8' (1 per 4.0 sq. ft.)	IB SD #12 or HD #14, IB 3" Insulation Plate	IB Approved Adhesive
Min. 1/2" Plywood	Approved Insulation & Approved Cover Board	10 per 4' x 8' (1 per 3.2 sq. ft.)	IB SD #12 or HD #14, IB 3" Insulation Plate	IB Approved Adhesive
Min. 19/32" Plywood	Approved Insulation & Approved Cover Board	16 per 4' x 8' (1 per 2.0 sq. ft.)	IB SD #12 or HD #14, IB 3" Insulation Plate	IB Approved Adhesive
Min. 19/32" Plywood	Approved Insulation & Approved Cover Board	20 per 4' x 8' (1 per 1.6 sq. ft.)	IB SD #12 or HD #14, IB 3" Insulation Plate	IB Approved Adhesive
Min. 19/32" Plywood	Approved Insulation & Approved Cover Board	24 per 4' x 8' (1 per 1.3 sq. ft.)	IB SD #12 or HD #14, IB 3" Insulation Plate	IB Approved Adhesive

<sup>1</sup>Approved Insulation: IB Energy Board II or III, or IB Approved UL Classified Polyisocyanurate, IB Approved UL Classified Expanded Polystyrene, IB Approved UL Classified Extruded Polystyrene Insulation.  
<sup>2</sup>Approved Cover Board: DensDeck Prime, DensDeck ProFast Prime, DensDeck StormX Prime, Securock Ultralight Coated Glass-Mat, Securock Gypsum Fiber Board, or DEXcell FA Glass Mat Roof Board, minimum 1/4" thickness; or minimum 7/16" DEXcell Cement Roof Board; or minimum 1/2" IB HD ISO-J, or 1/2" IB Recovery Energy Board III-J.  
<sup>3</sup>The use of some IB Approved Cover Boards may not achieve UL Classification.

<sup>4</sup>Approved Adhesive: IB TPO Water Based Adhesive, IB TPO Bonding Adhesive, IB TPO LVOC Adhesive, IB TPO CA LVOC Adhesive, or IB TPO Spray Contact Adhesive.  
 Note: IB TPO Bonding Adhesive, IB TPO LVOC Adhesive, and IB TPO CA LVOC Adhesive cannot be used with IB TPO FB Membranes.

System Uplift Note(s): \*\*Refer to applicable Approval Guide for System Code and/or FM Approvals Information. \*\*\*Refer to Substrate Resistance Table for required pull-out values.

For additional information about IB Roof Systems requirements, recommendations, installation details, approvals, and limitations for the above assemblies, please refer to the latest edition of the IB Roof Systems Specifications Manual. For Technical Services please contact IB Technical Department at 800-426-1626.

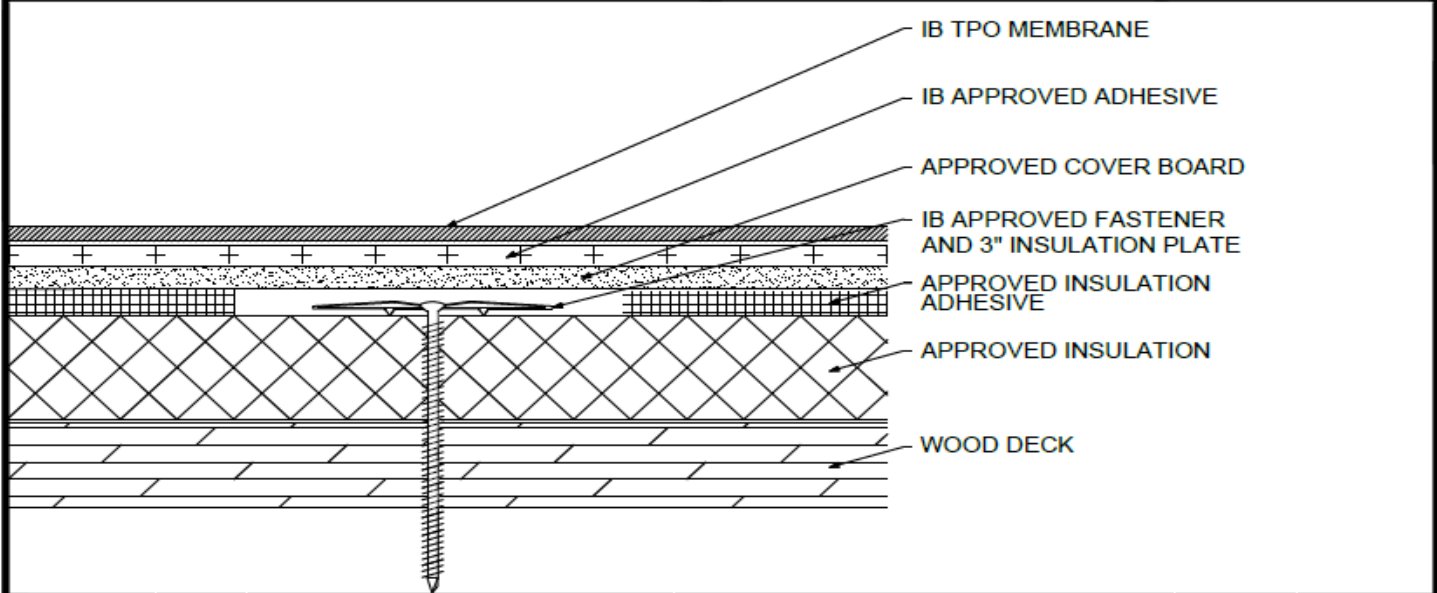
Membranes:	Membrane Color:	Warranty Length**	Warranty Type**
IB TPO SM 60 Mil	White*    Gray    Tan	10 Year    15 Year    20 Year	Contractor Warranty Only
IB TPO SM 80 Mil	White*    Gray    Tan	15 Year    20 Year    25 Year	Total Systems - No Dollar Limit (TSW)
IB TPO FB 115 Mil	White*    Gray    Tan	10 Year    15 Year    20 Year	Warranty Plus (WP)
IB TPO FB 135 Mil	White*    Gray    Tan	15 Year    20 Year    25 Year	Commercial Limited Material Warranty (CLMW) Residential Limited Material Warranty (RLMW)

\*Meets CRRC, Title 24, LEED (SRI)

\*\*Refer to Warranty Selection Guide for Warranty Riders, Term Length Limitations, and eligibility requirements of the IB Warranty Program

Submitted By:	Project Name:
Company Name:	Address:
Email/Phone:	City/State:

**Adhered TPO Membrane - Cover Board (RB) - Insulation (MA) - Wood Deck (New or Tear-Off)**



Deck Type	Insulation			Cover Board			IB Membrane Securement**
	Type <sup>1,3</sup>	Attachment	Fastener/Plate <sup>***</sup>	Type <sup>2,3</sup>	Adhesive Type <sup>4</sup>	Pattern <sup>***</sup>	Attachment <sup>5</sup>
Min. 7/16" OSB	Approved Insulation	12 per 4' x 8' (1 per 2.67 sq. ft.)	IB SD #12 or HD #14, IB 3" Insulation Plate	Approved Cover Board	Approved Insulation Adhesive	Min. Four Continuous Ribbons, 12" oc.	IB Approved Adhesive
Min. 7/16" OSB	Approved Insulation	16 per 4' x 8' (1 per 2.0 sq. ft.)	IB SD #12 or HD #14, IB 3" Insulation Plate	Approved Cover Board	Approved Insulation Adhesive	Min. Eight Continuous Ribbons, 6" oc.	IB Approved Adhesive
Min. 1/2" Plywood	Approved Insulation	8 per 4' x 8' (1 per 4.0 sq. ft.)	IB SD #12 or HD #14, IB 3" Insulation Plate	Approved Cover Board	Approved Insulation Adhesive	Min. Four Continuous Ribbons, 12" oc.	IB Approved Adhesive
Min. 1/2" Plywood	Approved Insulation	10 per 4' x 8' (1 per 3.2 sq. ft.)	IB SD #12 or HD #14, IB 3" Insulation Plate	Approved Cover Board	Approved Insulation Adhesive	Min. Eight Continuous Ribbons, 6" oc.	IB Approved Adhesive
Min. 1/2" Plywood	Approved Insulation	12 per 4' x 8' (1 per 2.67 sq. ft.)	IB SD #12 or HD #14, IB 3" Insulation Plate	Approved Cover Board	Approved Insulation Adhesive	Min. Four Continuous Ribbons, 12" oc.	IB Approved Adhesive
Min. 19/32" Plywood	Approved Insulation	16 per 4' x 8' (1 per 2.0 sq. ft.)	IB SD #12 or HD #14, IB 3" Insulation Plate	Approved Cover Board	Approved Insulation Adhesive	Min. Eight Continuous Ribbons, 6" oc.	IB Approved Adhesive
Min. 19/32" Plywood	Approved Insulation	20 per 4' x 8' (1 per 1.6 sq. ft.)	IB SD #12 or HD #14, IB 3" Insulation Plate	Approved Cover Board	Approved Insulation Adhesive	Min. Four Continuous Ribbons, 12" oc.	IB Approved Adhesive
Min. 19/32" Plywood	Approved Insulation	24 per 4' x 8' (1 per 1.3 sq. ft.)	IB SD #12 or HD #14, IB 3" Insulation Plate	Approved Cover Board	Approved Insulation Adhesive	Min. Eight Continuous Ribbons, 6" oc.	IB Approved Adhesive

<sup>1</sup>Approved Insulation: IB Energy Board II or III, or IB Approved UL Classified Polyisocyanurate, IB Approved UL Classified Expanded Polystyrene, IB Approved UL Classified Extruded Polystyrene Insulation.  
<sup>2</sup>Approved Cover Board: DensDeck Prime, DensDeck StormX Prime, Securock Ultralight Coated Glass-Mat, Securock Gypsum Fiber Board, or DEXcell FA Glass Mat Roof Board, minimum 7/16" DEXcell Cement Roof Board; or minimum 1/2" IB HD ISO-J, or 1/2" IB Recovery Energy Board III-J.  
<sup>3</sup>The use of some IB Approved Insulations and/or Cover Boards or combinations thereof may not achieve UL Classification.  
<sup>4</sup>Approved Insulation Adhesive: Rapid Set Adhesive, Rapid Set PG Foam, Rapid Set ECO Spray Foam, Rapid Set ECO<sub>2</sub> Spray Foam, Millennium One Step, Millennium PG-1 SAF Pump Grade, Millennium PG-1 EF ECO, Millennium PG-1 EF ECO<sub>2</sub>, OB500 Adhesive Fastener, OB500 Cannister, or TruFast Roofing Adhesive.  
<sup>5</sup>Approved Adhesive: IB TPO Water Based Adhesive, IB TPO Bonding Adhesive, IB TPO LVOC Adhesive, IB TPO CA LVOC Adhesive, or IB TPO Spray Contact Adhesive.  
**Note: IB TPO Bonding Adhesive, IB TPO LVOC Adhesive, IB TPO CA LVOC Adhesive cannot be used with IB TPO FB Membranes.**  
**System Uplift Note(s): \*\*Refer to applicable Approval Guide for System Code and/or FM Approvals Information. \*\*\*Refer to Substrate Resistance Table for required pull-out values.**

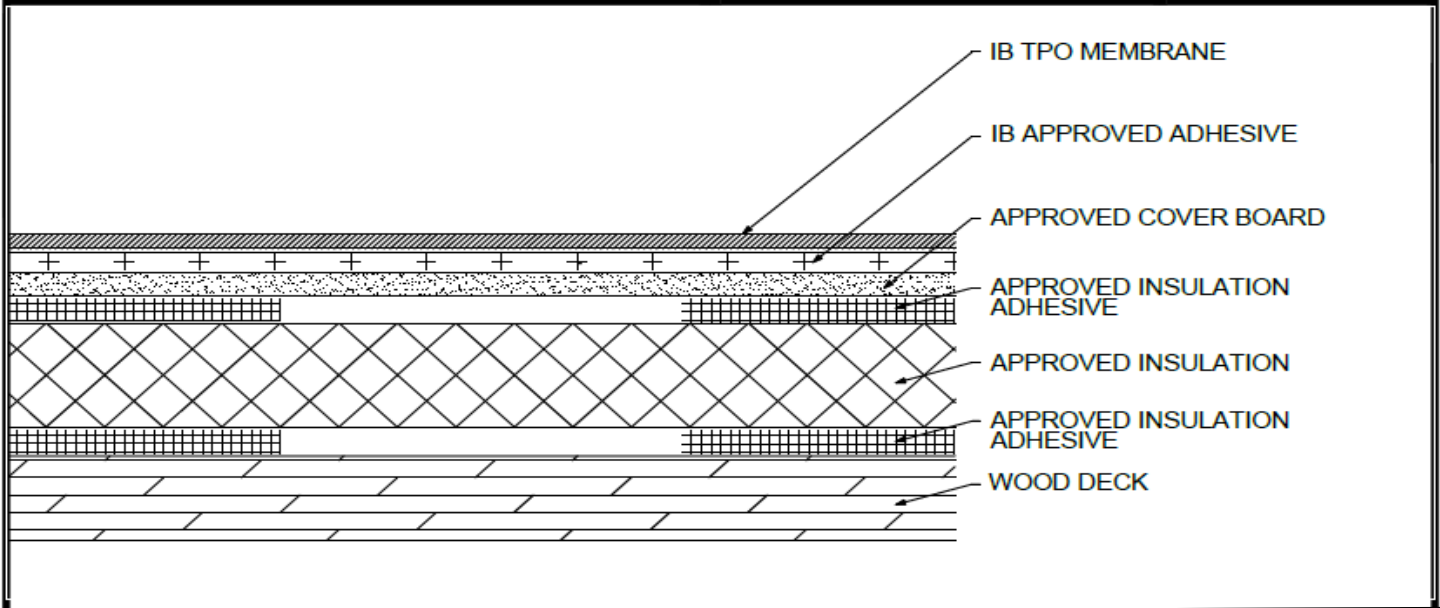
For additional information about IB Roof Systems requirements, recommendations, installation details, approvals, and limitations for the above assemblies, please refer to the latest edition of the IB Roof Systems Specifications Manual. For Technical Services please contact IB Technical Department at 800-426-1626.

Membranes:	Membrane Color:	Warranty Length**			Warranty Type**
IB TPO SM 60 Mil	White*      Gray      Tan	10 Year	15 Year	20 Year	Contractor Warranty Only Total Systems - No Dollar Limit (TSW) Warranty Plus (WP) Commercial Limited Material Warranty (CLMW) Residential Limited Material Warranty (RLMW)
IB TPO SM 80 Mil	White*      Gray      Tan	15 Year	20 Year	25 Year	
IB TPO FB 115 Mil	White*      Gray      Tan	10 Year	15 Year	20 Year	
IB TPO FB 135 Mil	White*      Gray      Tan	15 Year	20 Year	25 Year	

\*Meets CRRC, Title 24, LEED (SRI)

\*\*Refer to Warranty Selection Guide for Warranty Riders, Term Length Limitations, and eligibility requirements of the IB Warranty Program

Submitted By:	Project Name:
Company Name:	Address:
Email/Phone:	City/State:

**Adhered TPO Membrane - Cover Board (RB) - Insulation (RB) - Wood Deck (New or Tear-Off)**


Deck Type	Insulation			Cover Board			IB Membrane Securement**
	Type <sup>1,3</sup>	Attachment	Fastener/Plate <sup>***</sup>	Type <sup>2,3</sup>	Adhesive Type <sup>4</sup>	Pattern <sup>***</sup>	Attachment <sup>5</sup>
Min. 7/16" OSB	Approved Insulation	Approved Insulation Adhesive	Min. Four Continuous Ribbons, 12" oc.	Approved Cover Board	Approved Insulation Adhesive	Min. Four Continuous Ribbons, 12" oc.	IB Approved Adhesive
Min. 7/16" OSB	Approved Insulation	Approved Insulation Adhesive	Min. Eight Continuous Ribbons, 6" oc.	Approved Cover Board	Approved Insulation Adhesive	Min. Eight Continuous Ribbons, 6" oc.	IB Approved Adhesive
Min. 1/2" Plywood	Approved Insulation	Approved Insulation Adhesive	Min. Four Continuous Ribbons, 12" oc.	Approved Cover Board	Approved Insulation Adhesive	Min. Four Continuous Ribbons, 12" oc.	IB Approved Adhesive
Min. 1/2" Plywood	Approved Insulation	Approved Insulation Adhesive	Min. Eight Continuous Ribbons, 6" oc.	Approved Cover Board	Approved Insulation Adhesive	Min. Eight Continuous Ribbons, 6" oc.	IB Approved Adhesive
Min. 19/32" Plywood	Approved Insulation	Approved Insulation Adhesive	Min. Four Continuous Ribbons, 12" oc.	Approved Cover Board	Approved Insulation Adhesive	Min. Four Continuous Ribbons, 12" oc.	IB Approved Adhesive
Min. 19/32" Plywood	Approved Insulation	Approved Insulation Adhesive	Min. Eight Continuous Ribbons, 6" oc.	Approved Cover Board	Approved Insulation Adhesive	Min. Eight Continuous Ribbons, 6" oc.	IB Approved Adhesive

<sup>1</sup>Approved Insulation: IB Energy Board II or III, or IB Approved UL Classified Polyisocyanurate, IB Approved UL Classified Expanded Polystyrene, IB Approved UL Classified Extruded Polystyrene Insulation.  
<sup>2</sup>Approved Cover Board: DensDeck Prime, DensDeck StormX Prime, Securock Ultralight Coated Glass-Mat, Securock Gypsum Fiber Board, or DEXcell FA Glass Mat Roof Board, minimum 1/4" thickness; or minimum 7/16" DEXcell Cement Roof Board; or minimum 1/2" IB HD ISO-J, or 1/2" IB Recovery Energy Board III-J.  
<sup>3</sup>The use of some IB Approved Insulations and/or Cover Boards or combinations thereof may not achieve UL Classification.  
<sup>4</sup>Approved Insulation Adhesive: Rapid Set Adhesive, Rapid Set PG Foam, Rapid Set ECO Spray Foam, Rapid Set ECO<sub>2</sub> Spray Foam, Millennium One Step, Millennium PG-1 SAF Pump Grade, Millennium PG-1 EF ECO, Millennium PG-1 EF ECO<sub>2</sub>, OB500 Adhesive Fastener, OB500 Cannister, or TruFast Roofing Adhesive.  
<sup>5</sup>Approved Adhesive: IB TPO Water Based Adhesive, IB TPO Bonding Adhesive, IB TPO LVOC Adhesive, IB TPO CA LVOC Adhesive, or IB TPO Spray Contact Adhesive.  
**Note: IB TPO Bonding Adhesive, IB TPO LVOC Adhesive, and IB TPO CA LVOC Adhesive cannot be used with IB TPO FB Membranes.**  
**System Uplift Note(s): \*\*Refer to applicable Approval Guide for System Code and/or FM Approvals Information. \*\*\*Refer to Substrate Resistance Table for required pull-out values.**  
**For additional information about IB Roof Systems requirements, recommendations, installation details, approvals, and limitations for the above assemblies, please refer to the latest edition of the IB Roof Systems Specifications Manual. For Technical Services please contact IB Technical Department at 800-426-1626.**

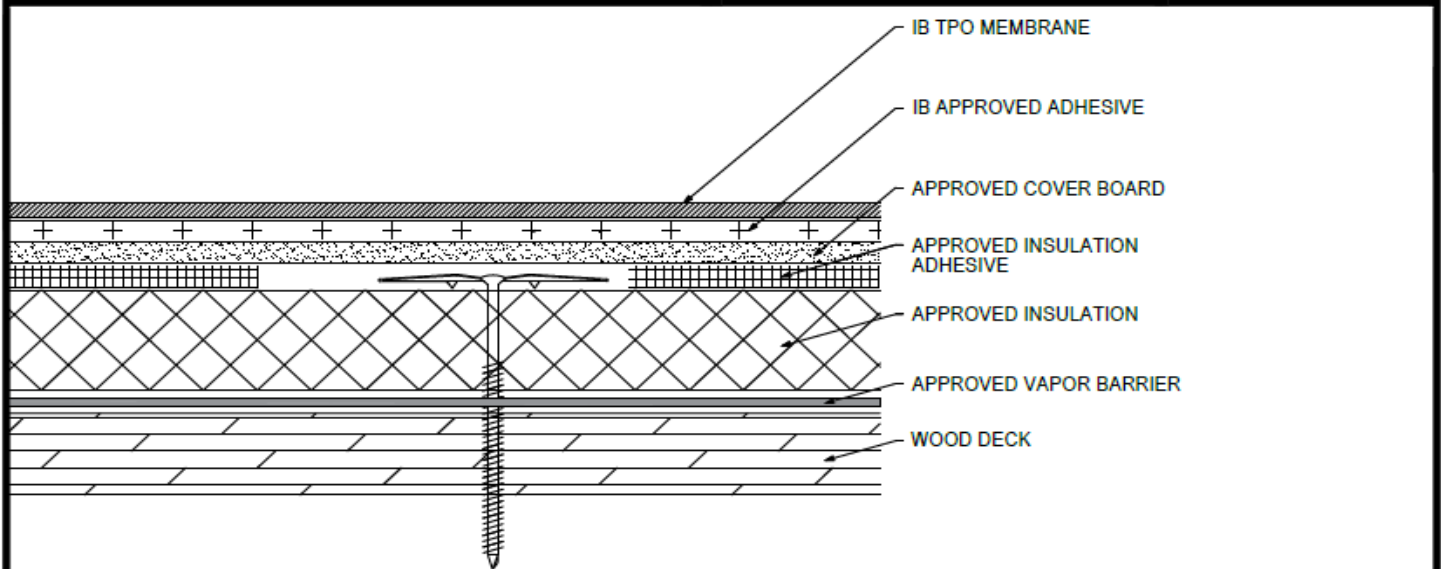
Membranes:	Membrane Color:	Warranty Length**	Warranty Type**
IB TPO SM 60 Mil	White* Gray Tan	10 Year 15 Year 20 Year	Contractor Warranty Only Total Systems - No Dollar Limit (TSW) Warranty Plus (WP) Commercial Limited Material Warranty (CLMW) Residential Limited Material Warranty (RLMW)
IB TPO SM 80 Mil	White* Gray Tan	15 Year 20 Year 25 Year	
IB TPO FB 115 Mil	White*	10 Year 15 Year 20 Year	
IB TPO FB 135 Mil	White*	15 Year 20 Year 25 Year	

\*Meets CRRC, Title 24, LEED (SRI)

\*\*Refer to Warranty Selection Guide for Warranty Riders, Term Length Limitations, and eligibility requirements of the IB Warranty Program

Submitted By:	Project Name:
Company Name:	Address:
Email/Phone:	City/State:

**Adhered TPO Membrane - Cover Board (RB) - Insulation (MA) - Vapor Barrier - Wood Deck (New or Tear-Off)**



Deck Type	Insulation/Vapor Barrier			Cover Board			IB Membrane Securement**
	Type <sup>1,2,4</sup>	Attachment	Fastener/Plate <sup>***</sup>	Type <sup>3,4</sup>	Adhesive Type <sup>5</sup>	Pattern <sup>***</sup>	Attachment <sup>6</sup>
Min. 7/16" OSB	Approved Insulation & Approved Vapor Barrier	12 per 4' x 8' (1 per 2.67 sq. ft.)	IB SD #12 or HD #14, IB 3" Insulation Plate	Approved Cover Board	Approved Insulation Adhesive	Min. Four Continuous Ribbons, 12" oc.	IB Approved Adhesive
Min. 7/16" OSB	Approved Insulation & Approved Vapor Barrier	16 per 4' x 8' (1 per 2.0 sq. ft.)	IB SD #12 or HD #14, IB 3" Insulation Plate	Approved Cover Board	Approved Insulation Adhesive	Min. Eight Continuous Ribbons, 6" oc.	IB Approved Adhesive
Min. 1/2" Plywood	Approved Insulation & Approved Vapor Barrier	8 per 4' x 8' (1 per 4.0 sq. ft.)	IB SD #12 or HD #14, IB 3" Insulation Plate	Approved Cover Board	Approved Insulation Adhesive	Min. Four Continuous Ribbons, 12" oc.	IB Approved Adhesive
Min. 1/2" Plywood	Approved Insulation & Approved Vapor Barrier	10 per 4' x 8' (1 per 3.2 sq. ft.)	IB SD #12 or HD #14, IB 3" Insulation Plate	Approved Cover Board	Approved Insulation Adhesive	Min. Eight Continuous Ribbons, 6" oc.	IB Approved Adhesive
Min. 1/2" Plywood	Approved Insulation & Approved Vapor Barrier	16 per 4' x 8' (1 per 2.0 sq. ft.)	IB SD #12 or HD #14, IB 3" Insulation Plate	Approved Cover Board	Approved Insulation Adhesive	Min. Four Continuous Ribbons, 12" oc.	IB Approved Adhesive
Min. 1/2" Plywood	Approved Insulation & Approved Vapor Barrier	16 per 4' x 8' (1 per 2.0 sq. ft.)	IB SD #12 or HD #14, IB 3" Insulation Plate	Approved Cover Board	Approved Insulation Adhesive	Min. Eight Continuous Ribbons, 6" oc.	IB Approved Adhesive
Min. 19/32" Plywood	Approved Insulation & Approved Vapor Barrier	20 per 4' x 8' (1 per 1.6 sq. ft.)	IB SD #12 or HD #14, IB 3" Insulation Plate	Approved Cover Board	Approved Insulation Adhesive	Min. Four Continuous Ribbons, 12" oc.	IB Approved Adhesive
Min. 19/32" Plywood	Approved Insulation & Approved Vapor Barrier	20 per 4' x 8' (1 per 1.6 sq. ft.)	IB SD #12 or HD #14, IB 3" Insulation Plate	Approved Cover Board	Approved Insulation Adhesive	Min. Eight Continuous Ribbons, 6" oc.	IB Approved Adhesive
Min. 19/32" Plywood	Approved Insulation & Approved Vapor Barrier	24 per 4' x 8' (1 per 1.3 sq. ft.)	IB SD #12 or HD #14, IB 3" Insulation Plate	Approved Cover Board	Approved Insulation Adhesive	Min. Four Continuous Ribbons, 12" oc.	IB Approved Adhesive
Min. 19/32" Plywood	Approved Insulation & Approved Vapor Barrier	24 per 4' x 8' (1 per 1.3 sq. ft.)	IB SD #12 or HD #14, IB 3" Insulation Plate	Approved Cover Board	Approved Insulation Adhesive	Min. Eight Continuous Ribbons, 6" oc.	IB Approved Adhesive

<sup>1</sup>Approved Vapor Barrier: IBarrier SA Membrane, IBarrier FG SAR, IBarrier XP SA Membrane, applied using self-adhesive techniques.  
<sup>2</sup>Approved Insulation: IB Energy Board II or III, or IB Approved UL Classified Polyisocyanurate, IB Approved UL Classified Expanded Polystyrene, IB Approved UL Classified Extruded Polystyrene Insulation.  
<sup>3</sup>Approved Cover Board: DensDeck Prime, DensDeck ProFast Prime, DensDeck StormX Prime, Securock Ultralight Coated Glass-Mat, Securock Gypsum Fiber Board, or DEXcell FA Glass Mat Roof Board, minimum 1/4" thickness; or minimum 7/16" DEXcell Cement Roof Board; or minimum 1/2" IB HD ISO-J, or 1/2" IB Recovery Energy Board III-J.  
<sup>4</sup>The use of some IB Approved Insulations and/or Cover Boards or combinations thereof may not achieve UL Classification.  
<sup>5</sup>Approved Insulation Adhesive: Rapid Set Adhesive, Rapid Set PG Foam, Rapid Set ECO Spray Foam, Rapid Set ECO<sub>2</sub> Spray Foam, Millennium One Step, Millennium PG-1 SAF Pump Grade, Millennium PG-1 EF ECO, Millennium PG-1 EF ECO<sub>2</sub>, OB500 Adhesive Fastener, OB500 Cannister, or TruFast Roofing Adhesive.  
<sup>6</sup>Approved Membrane Adhesive: IB TPO Water Based Adhesive, IB TPO Bonding Adhesive, IB TPO LVOC Adhesive, IB TPO CA LVOC Adhesive, or IB TPO Spray Contact Adhesive.  
**Note: IB TPO Bonding Adhesive, IB TPO LVOC Adhesive, and IB TPO CA LVOC Adhesive cannot be used with IB TPO FB Membranes.**  
**System Uplift Note(s): \*\*Refer to applicable Approval Guide for System Code and/or FM Approvals Information. \*\*\*Refer to Substrate Resistance Table for required pull-out values.**  
 For additional information about IB Roof Systems requirements, recommendations, installation details, approvals, and limitations for the above assemblies, please refer to the latest edition of the IB Roof Systems Specifications Manual. For Technical Services please contact IB Technical Department at 800-426-1626.

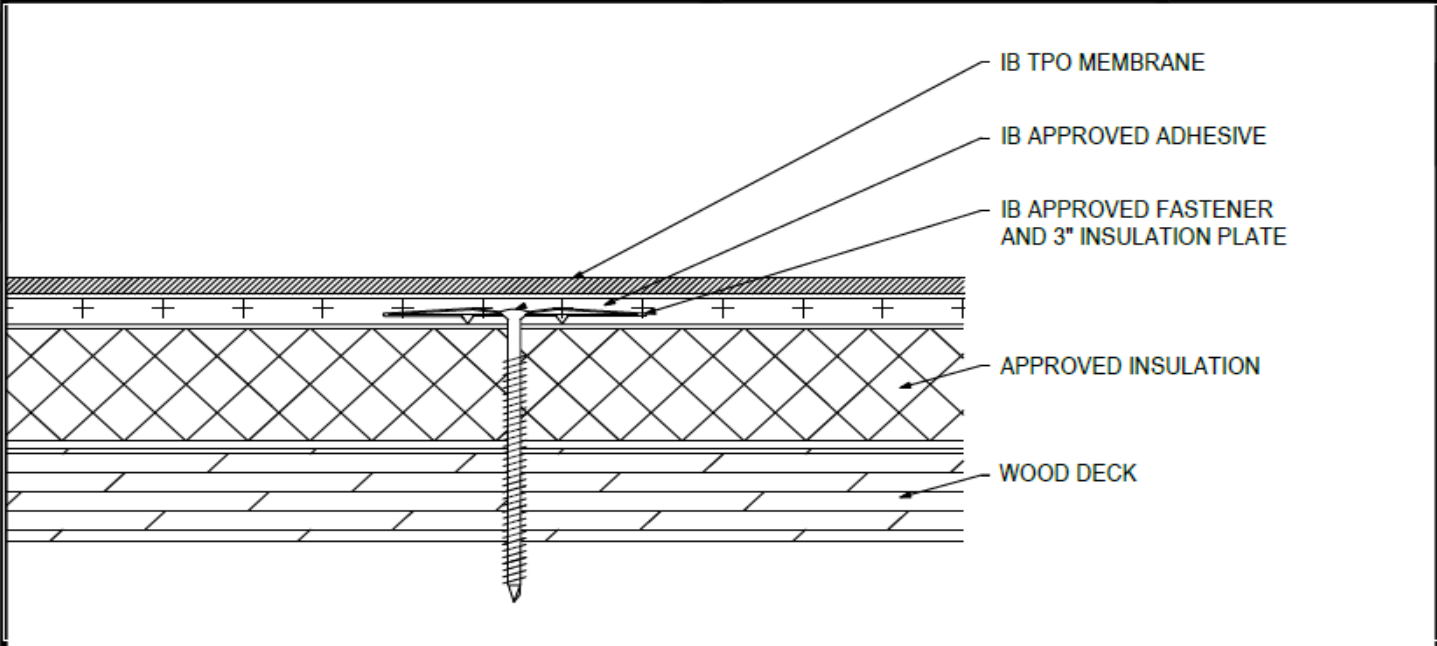
Membranes:		Membrane Color:			Warranty Length**			Warranty Type**	
IB TPO SM 60 Mil		White*	Gray	Tan	10 Year	15 Year	20 Year	Contractor Warranty Only	
IB TPO SM 80 Mil		White*	Gray	Tan	15 Year	20 Year	25 Year	Total Systems - No Dollar Limit (TSW)	
IB TPO FB 115 Mil		White*			10 Year	15 Year	20 Year	Warranty Plus (WP)	
IB TPO FB 135 Mil		White*			15 Year	20 Year	25 Year	Commercial Limited Material Warranty (CLMW)	
								Residential Limited Material Warranty (RLMW)	

\*Meets CRRC, Title 24, LEED (SRI)

\*\*Refer to Warranty Selection Guide for Warranty Riders, Term Length Limitations, and eligibility requirements of the IB Warranty Program

Submitted By:		Project Name:	
Company Name:		Address:	
Email/Phone:		City/State:	

**Adhered TPO Membrane - Insulation (MA) - Wood Deck (New or Tear-Off)**



Deck Type	Insulation			IB Membrane Securement**
	Type <sup>1,2</sup>	Attachment	Fastener/Plate***	Attachment <sup>3</sup>
Min. 7/16" OSB	Approved Insulation	12 per 4' x 8' (1 per 2.67 sq. ft.)	IB SD #12 or HD #14, IB 3" Insulation Plate	IB Approved Adhesive
Min. 7/16" OSB	Approved Insulation	16 per 4' x 8' (1 per 2.0 sq. ft.)	IB SD #12 or HD #14, IB 3" Insulation Plate	IB Approved Adhesive
Min. 1/2" Plywood	Approved Insulation	8 per 4' x 8' (1 per 4.0 sq. ft.)	IB SD #12 or HD #14, IB 3" Insulation Plate	IB Approved Adhesive
Min. 1/2" Plywood	Approved Insulation	10 per 4' x 8' (1 per 3.2 sq. ft.)	IB SD #12 or HD #14, IB 3" Insulation Plate	IB Approved Adhesive
Min. 19/32" Plywood	Approved Insulation	16 per 4' x 8' (1 per 2.0 sq. ft.)	IB SD #12 or HD #14, IB 3" Insulation Plate	IB Approved Adhesive
Min. 19/32" Plywood	Approved Insulation	20 per 4' x 8' (1 per 1.6 sq. ft.)	IB SD #12 or HD #14, IB 3" Insulation Plate	IB Approved Adhesive
Min. 19/32" Plywood	Approved Insulation	24 per 4' x 8' (1 per 1.3 sq. ft.)	IB SD #12 or HD #14, IB 3" Insulation Plate	IB Approved Adhesive

<sup>1</sup>Approved Insulation: IB Energy Board II or III, or IB Approved UL Classified Polyisocyanurate

<sup>2</sup>The use of some IB Approved Insulations may not achieve UL Classification.

<sup>3</sup>Approved Membrane Adhesive: IB TPO Water Based Adhesive, IB TPO Bonding Adhesive, IB TPO LVOC Adhesive, IB TPO CA LVOC Adhesive, or IB TPO Spray Contact Adhesive.

Note: IB TPO Bonding Adhesive, IB TPO LVOC Adhesive, and IB TPO CA LVOC Adhesive cannot be used with IB TPO FB Membranes.

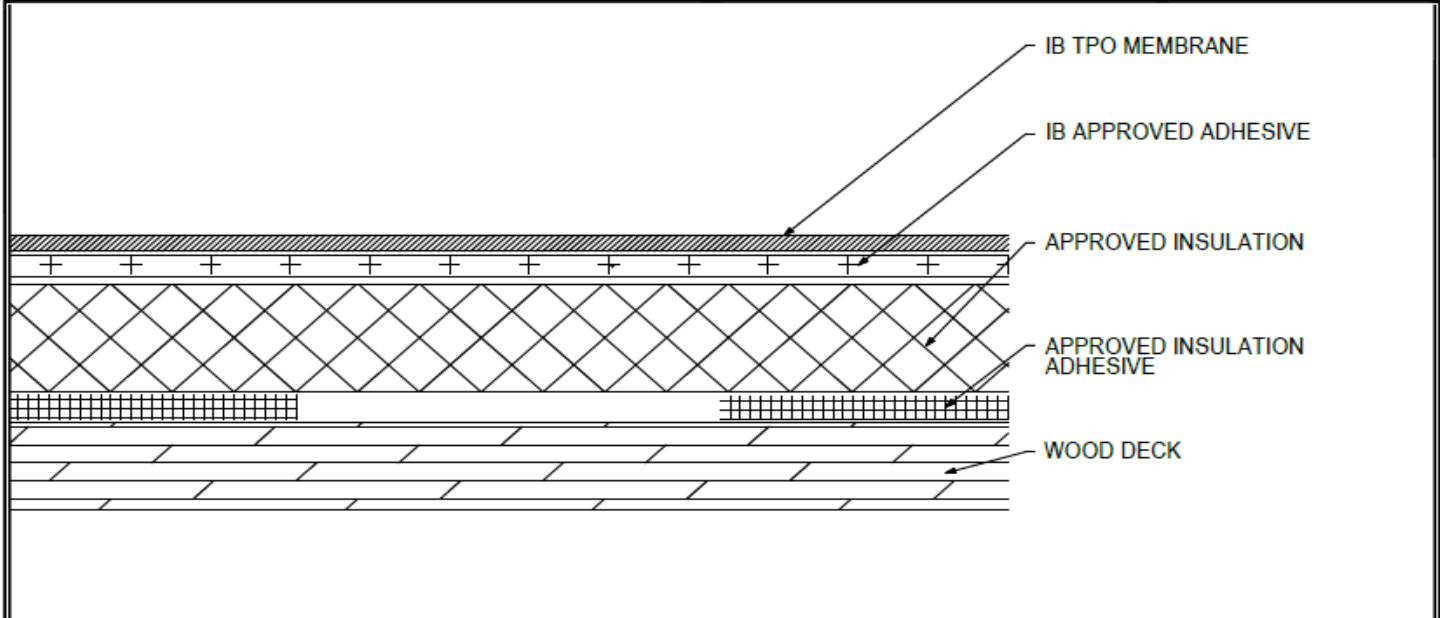
System Uplift Note(s): \*\*Refer to applicable Approval Guide for System Code and/or FM Approvals Information. \*\*\*Refer to Substrate Resistance Table for required pull-out values.

For additional information about IB Roof Systems requirements, recommendations, installation details, approvals, and limitations for the above assemblies, please refer to the latest edition of the IB Roof Systems Specifications Manual. For Technical Services please contact IB Technical Department at 800-426-1626.

Membranes:		Membrane Color:			Warranty Length**				Warranty Type**		
IB TPO SM 60 Mil	White*	Gray	Tan	10 Year	15 Year	20 Year	Contractor Warranty Only				
IB TPO SM 80 Mil	White*	Gray	Tan	15 Year	20 Year	25 Year	Total Systems - No Dollar Limit (TSW)				
IB TPO FB 115 Mil	White*				10 Year	15 Year	20 Year				Warranty Plus (WP)
IB TPO FB 135 Mil	White*				15 Year	20 Year	25 Year				Commercial Limited Material Warranty (CLMW)
*Meets CRRC, Title 24, LEED (SRI)								Residential Limited Material Warranty (RLMW)			
**Refer to Warranty Selection Guide for Warranty Riders, Term Length Limitations, and eligibility requirements of the IB Warranty Program											

Submitted By:	Project Name:
Company Name:	Address:
Email/Phone:	City/State:

**Adhered TPO Membrane - Insulation (RB) - Wood Deck (New or Tear-Off)**



Deck Type	Insulation			IB Membrane Securement**
	Type <sup>1,2</sup>	Insulation Adhesive <sup>3</sup>	Pattern	
Min. 7/16" OSB	Approved Insulation	Approved Insulation Adhesive	Min. Four Continuous Ribbons, 12" oc.	IB Approved Adhesive
Min. 1/2" Plywood	Approved Insulation	Approved Insulation Adhesive	Min. Four Continuous Ribbons, 12" oc.	IB Approved Adhesive
Min. 19/32" Plywood	Approved Insulation	Approved Insulation Adhesive	Min. Four Continuous Ribbons, 12" oc.	IB Approved Adhesive

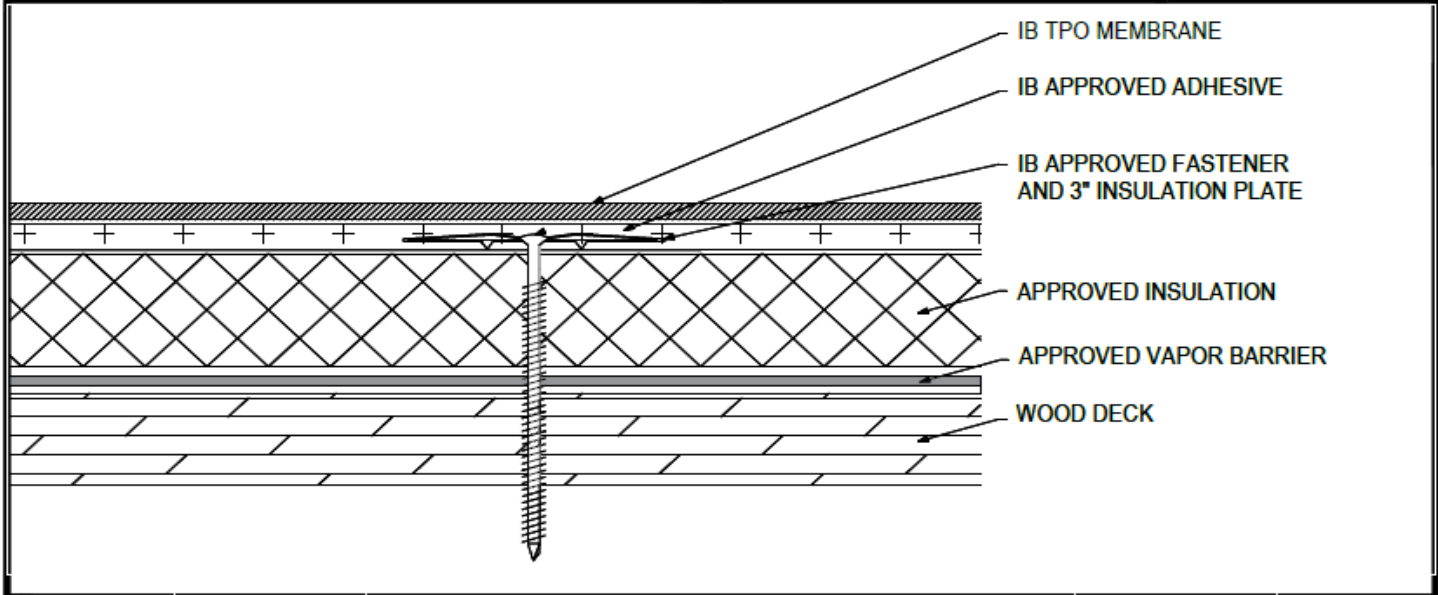
<sup>1</sup>Approved Insulation: IB Energy Board II or III, or IB Approved UL Classified Polyisocyanurate  
<sup>2</sup>The use of some IB Approved Insulations may not achieve UL Classification.  
<sup>3</sup>Approved Insulation Adhesive: Rapid Set Adhesive, Rapid Set PG Foam, Rapid Set ECO Spray Foam, Rapid Set ECO<sub>2</sub> Spray Foam, Millennium One Step, Millennium PG-1 SAF Pump Grade, Millennium PG-1 EF ECO, Millennium PG-1 EF ECO<sub>2</sub>, OB500 Adhesive Fastener, OB500 Cannister, or TruFast Roofing Adhesive  
<sup>4</sup>Approved Membrane Adhesive: IB TPO Water Based Adhesive, IB TPO Bonding Adhesive, IB TPO LVOC Adhesive, IB TPO CA LVOC Adhesive, or IB TPO Spray Contact Adhesive.  
**Note: IB TPO Bonding Adhesive, IB TPO LVOC Adhesive, and IB TPO CA LVOC Adhesive cannot be used with IB TPO FB Membranes.**  
**System Uplift Note(s): \*\*Refer to applicable Approval Guide for System Code and/or FM Approvals Information. \*\*\*Refer to Substrate Resistance Table for required pull-out values.**  
 For additional information about IB Roof Systems requirements, recommendations, installation details, approvals, and limitations for the above assemblies, please refer to the latest edition of the IB Roof Systems Specifications Manual. For Technical Services please contact IB Technical Department at 800-426-1626.

Membranes:	Membrane Color:	Warranty Length**			Warranty Type**
IB TPO SM 60 Mil	White*    Gray    Tan	10 Year	15 Year	20 Year	Contractor Warranty Only Total Systems - No Dollar Limit (TSW) Warranty Plus (WP) Commercial Limited Material Warranty (CLMW) Residential Limited Material Warranty (RLMW)
IB TPO SM 80 Mil	White*    Gray    Tan	15 Year	20 Year	25 Year	
IB TPO FB 115 Mil	White*	10 Year	15 Year	20 Year	
IB TPO FB 135 Mil	White*	15 Year	20 Year	25 Year	

\*Meets CRRC, Title 24, LEED (SRI)  
 \*\*Refer to Warranty Selection Guide for Warranty Riders, Term Length Limitations, and eligibility requirements of the IB Warranty Program

Submitted By:	Project Name:
Company Name:	Address:
Email/Phone:	City/State:

**Adhered TPO Membrane - Insulation (MA) - Vapor Barrier - Wood Deck (New or Tear-Off)**



Deck Type	Insulation/Vapor Barrier			IB Membrane Securement**
	Type <sup>1,2,3</sup>	Attachment	Fastener/Plate***	Attachment <sup>4</sup>
Min. 7/16" OSB	Approved Insulation & Approved Vapor Barrier	12 per 4' x 8' (1 per 2.67 sq. ft.)	IB SD #12 or HD #14, IB 3" Insulation Plate	IB Approved Adhesive
Min. 7/16" OSB	Approved Insulation & Approved Vapor Barrier	16 per 4' x 8' (1 per 2.0 sq. ft.)	IB SD #12 or HD #14, IB 3" Insulation Plate	IB Approved Adhesive
Min. 1/2" Plywood	Approved Insulation & Approved Vapor Barrier	8 per 4' x 8' (1 per 4.0 sq. ft.)	IB SD #12 or HD #14, IB 3" Insulation Plate	IB Approved Adhesive
Min. 1/2" Plywood	Approved Insulation & Approved Vapor Barrier	10 per 4' x 8' (1 per 3.2 sq. ft.)	IB SD #12 or HD #14, IB 3" Insulation Plate	IB Approved Adhesive
Min. 1/2" Plywood	Approved Insulation & Approved Vapor Barrier	12 per 4' x 8' (1 per 2.67 sq. ft.)	IB SD #12 or HD #14, IB 3" Insulation Plate	IB Approved Adhesive
Min. 19/32" Plywood	Approved Insulation & Approved Vapor Barrier	16 per 4' x 8' (1 per 2.0 sq. ft.)	IB SD #12 or HD #14, IB 3" Insulation Plate	IB Approved Adhesive
Min. 19/32" Plywood	Approved Insulation & Approved Vapor Barrier	20 per 4' x 8' (1 per 1.6 sq. ft.)	IB SD #12 or HD #14, IB 3" Insulation Plate	IB Approved Adhesive
Min. 19/32" Plywood	Approved Insulation & Approved Vapor Barrier	24 per 4' x 8' (1 per 1.3 sq. ft.)	IB SD #12 or HD #14, IB 3" Insulation Plate	IB Approved Adhesive

<sup>1</sup>Approved Vapor Barrier: IBarrier SA Membrane, IBarrier FG SAR, IBarrier XP SA Membrane, applied using self-adhesive techniques.

<sup>2</sup>Approved Insulation: IB Energy Board II or III, or IB Approved UL Classified Polyisocyanurate.

<sup>3</sup>The use of some IB Approved Insulations may not achieve UL Classification.

<sup>4</sup>Approved Membrane Adhesive: IB TPO Water Based Adhesive, IB TPO Bonding Adhesive, IB TPO LVOC Adhesive, IB TPO CA LVOC Adhesive, or IB TPO Spray Contact Adhesive.

Note: IB TPO Bonding Adhesive, IB TPO LVOC Adhesive, and IB TPO CA LVOC Adhesive cannot be used with IB TPO FB Membranes.

System Uplift Note(s): \*\*Refer to applicable Approval Guide for System Code and/or FM Approvals Information. \*\*\*Refer to Substrate Resistance Table for required pull-out values.

For additional information about IB Roof Systems requirements, recommendations, installation details, approvals, and limitations for the above assemblies, please refer to the latest edition of the IB Roof Systems Specifications Manual. For Technical Services please contact IB Technical Department at 800-426-1626.

Membranes:		Membrane Color:			Warranty Length**				Warranty Type**	
IB TPO SM 60 Mil	White*	Gray	Tan	10 Year	15 Year	20 Year	Contractor Warranty Only			
IB TPO SM 80 Mil	White*	Gray	Tan	15 Year	20 Year	25 Year	Total Systems - No Dollar Limit (TSW)			
IB TPO FB 115 Mil	White*				10 Year	15 Year	20 Year	Warranty Plus (WP)		
IB TPO FB 135 Mil	White*				15 Year	20 Year	25 Year	Commercial Limited Material Warranty (CLMW)		
								Residential Limited Material Warranty (RLMW)		

\*Meets CRRC, Title 24, LEED (SRI)

\*\*Refer to Warranty Selection Guide for Warranty Riders, Term Length Limitations, and eligibility requirements of the IB Warranty Program

Submitted By:	Project Name:
Company Name:	Address:
Email/Phone:	City/State: