

IB® TPO CLAD STAINLESS STEEL DRIP EDGE



Product Description:

IB TPO Clad Stainless Steel Drip Edge is fabricated with a 24-gauge, SAE 304 coated stainless steel sheet metal with a durable 25-mil non-reinforced IB TPO film laminated to the top surface. It is formed into a standard metal drip edge profile with an open-hem kick-out at the bottom to provide a corrosion resistant, heat weld-able perimeter roof edge termination for the roof membrane.

Features:

- Factory fabricated edge metal ready to install onsite
- Durable 25-mil IB TPO non-reinforced film laminated to corrosion resistant 24-gauge, SAE 304 coated stainless steel sheet metal
- Additional sizes and profiles available through custom order to your specifications

Available Clad Colors:



*Gray and tan are special order only

Sizes:

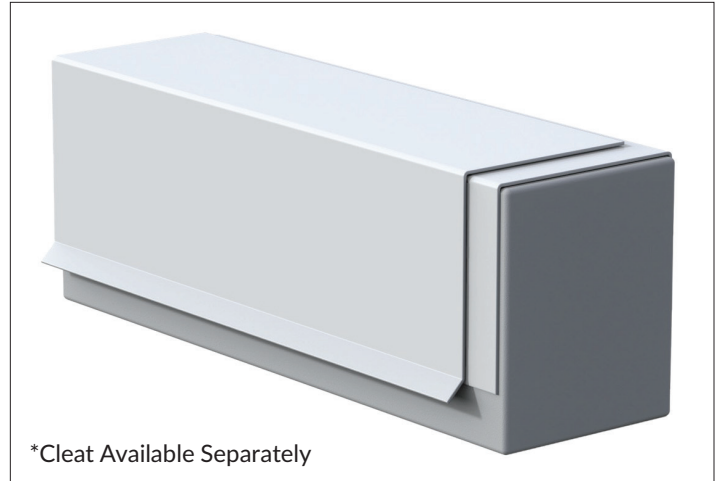
Standard sizes available in 2.5" and 4" drip edge. Custom sizes available as a special order.

Packaging:

- Sold per 10' section
- Available in 10-piece cardboard box

Accessory Metal Cleat:

Factory fabricated 22-gauge SAE 304 coated stainless steel sheet metal cleats are sold separately and are custom manufactured for use with IB® TPO Clad Stainless Steel Drip Stop produced for installations requiring a continuous cleat. They are formed to profile with a 1-1/2" deck flange.



Product details stated are nominal as manufactured, and the results of tests and/or calculations and therefore are non-binding and do not represent a guarantee or warranted characteristics. User and/or designer are responsible for confirming suitable performance for specific application and conforming with all applicable laws and regulations.

ANSI/SPRI/ FM4435 ES-1 Tested Metals (Report # 09092021-73465-2)

Product ID	Attachment	Max. Load / Max. Design Pressure
2.5" Clad Drip Edge Metal with CS Steel G90 22 ga. cleat	Min. two (2) 1-1/2" long galvanized roofing nail 3" oc. staggered in two rows 0.5" offset from each other. Cleat secured 1-3/4" above kick using 1.25" long galvanized roofing nail at 6" oc.	350 psf / 233 MDP
4" Clad Drip Edge Metal with G90 CS Steel 22 ga. cleat		350 psf / 233 MDP
6" Clad Drip Edge Metal with G90 CS Steel 22 ga. cleat		350 psf / 233 MDP
8" Clad Drip Edge Metal with G90 CS Steel 22 ga. cleat		350 psf / 233 MDP

*Reflects safety factor of 2 applied. Building owner, project designer, engineer, or contractor is responsible to determine appropriate safety factor for project design conditions.

	GRAVEL STOP	2.5"	4"
	A - FLANGE	4"	4"
	B - COVERAGE	2"	3.5"
	C - FACE	2.5"	4"
	D - HEM	.50"	.50"
LENGTH		10'	10'
WEIGHT		5.5 LBS	7.5 LBS

Go to <https://ibroof.com/tds> for the most up-to-date version of this document.

Toll Free: 800-426-1626

Care has been taken to ensure that the contents of this publication are accurate, however IB Roof Systems and any subsidiary companies do not accept responsibility for errors or for information that is found to be misleading. Suggestions for, or description of, the end use of application of products or methods of working, are for information only and IB Roof systems and any subsidiary accept no responsibility in respect thereof.



Quality Products



Exceptional Service



Technical Expertise

IBroof.com

510910038 1/27/2026