



Product Description:

IB TPO Overflow Retrofit Drain is designed as an overflow drain option for installation into various sized existing leader pipes. It is constructed from marine grade spun aluminum. The strainer is made from cast aluminum and is secured with a stainless-steel bolt and designed as an all-in-one clamping ring. The IB TPO Overflow Retrofit Drain has a 2" overflow collar and a factory applied IB TPO target sheet that can be hot air welded directly to an installed IB TPO membrane. It features a patented super seal gasket to make a watertight connection between the installed drain and the drain leader and requires no special tools to install.

Features:

- One-piece seamless heavy-duty body manufactured from marine grade spun aluminum
- Extra-large 15-17" diameter aluminum drain flange
- Heavy duty aluminum strainer dome
- Heavy duty cast aluminum 2" tall collar
- 12" long drain stem, can be cut to a minimum 2.5" length
- Simple and easy to install. No additional tools required
- Includes EPDM super seal gasket

Available Membrane Colors:



Sizes:

2", 3", 4", 5" and 6"

Packaging:

Sold in individual units

Approvals:

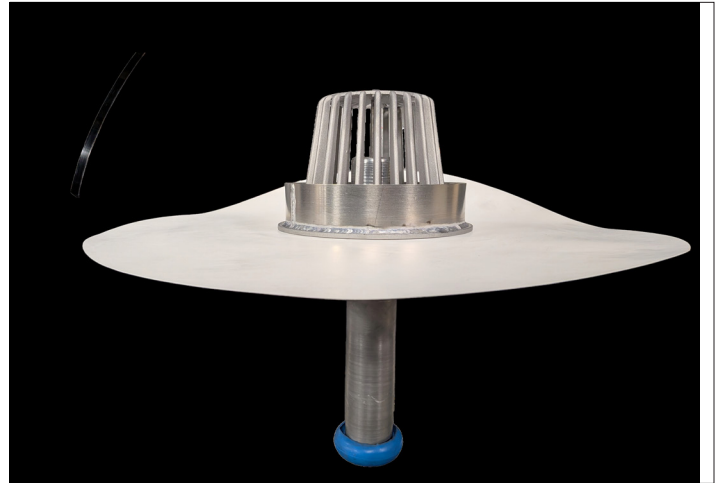
Meets ANSI/SPRI RD-1

Storage:

Store IB TPO Retrofit Drain indoors, out of direct sunlight, in original unopened containers and away from objects that could cause physical damage or create punctures as well as ignition sources. The membrane is flammable and will catch fire when exposed to open flame.

Application:

Refer to IB TPO Specifications and Construction Details for installation requirements and additional information for specific uses. Prior to application, use the IB Membrane Cleaner to ensure no oil, dirt, moisture, or other foreign materials are present on either the receiving substrate or the drain area that



IB TPO Overflow Retrofit Drain Product Data					
Drain Size	Drain Outlet OD	Outlet Base Dia.	Target Flashing Dia.	Standard Retrofit Drain Weight w/ Target	Flow Capacity GPM
2"	1.37"	15"	24"	9 lbs	10
3"	2.35"	17"	24"	9 lbs	41
4"	3.32"	17"	24"	9 lbs	109
5"	4.34"	17"	24"	9 lbs	228
6"	5.26"	17"	24"	9 lbs	397
*Above drains were able to perform at the peak rates with a head of water of 3-1/4" or less.					

Product details stated are nominal as manufactured, and the results of tests and/or calculations and therefore are non-binding and do not represent a guarantee or warranted characteristics. User and/or designer are responsible for confirming suitable performance for specific application and conforming with all applicable laws and regulations.

could damage to the drain insert. Ensure super seal is properly seated at bottom of drain throat. Ensure super seal is properly seated at bottom of drain throat and apply silicone lubricant (provided by others) to super seal to ease as you insert into drain pipe. Insert the IB TPO Overflow Retrofit Drain completely into drain pipe. Lift membrane flange and fasten spun aluminum base flange with approved fasteners (supplied by others). Heat-weld the flange of the drain flashing to the TPO membrane to fuse them together and use a roller to ensure a proper weld. After the flashing has cooled, probe for any locations that have not been fully welded in the seam area. Apply IB TPO Cut Edge Sealant 360 degrees around outer flange. Complete the drain installation by securing the strainer in place and tighten to create compression of the target sheet.

Refer to www.ibroof.com for additional installation instructions. Membranes must not be applied during adverse weather or without precautionary measures in temperatures below 40°F (4°C). All surfaces should be clean, dry, free of dirt, dust, debris, oils, soaps, coatings, and other contaminants that may inhibit bonding.

Go to <https://ibroof.com/tds> for the most up-to-date version of this document.

Toll Free: 800-426-1626

Care has been taken to ensure that the contents of this publication are accurate, however IB Roof Systems and any subsidiary companies do not accept responsibility for errors or for information that is found to be misleading. Suggestions for, or description of, the end use of application of products or methods of working, are for information only and IB Roof systems and any subsidiary accept no responsibility in respect thereof.