



Product Description:

IB TPO Pitch Pans are fabricated from IB TPO Clad Metal constructed with a 24-gauge, G90 coated galvanized sheet metal with a durable 30-mil non-reinforced IB TPO film, laminated to the top surface. Pitch pans are custom fabricated to your exact specification. A factory welded; reinforced IB TPO Single Ply target flashing is bonded to the clad which allows for easy application over the newly installed IB roof system. They are intended to be used in conjunction with M-1 Sealant and One-Part Pourable Penetration Sealant or filled with IB Sealer.

Features:

- Split pan format for ease of installation
- Factory welded reinforced membrane target
- Integral flanges for securement
- Custom orders available for a variety of membrane thicknesses and color options

Available Clad Colors:



*Gray and tan are special order only

Available Membrane Colors:



*Gray and tan are special order only

Sizes:

All pitch pans are custom made to order.

Packaging:

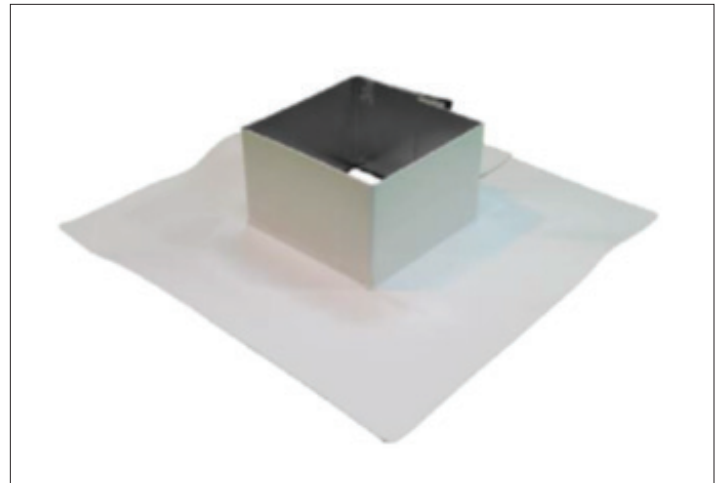
Sold in individual units

Storage:

Store IB TPO Pitch Pans indoors, out of direct sunlight, in original unopened containers and away from objects that could cause physical damage or create punctures as well as ignition sources. The membrane is flammable and will catch fire when exposed to open flame.

Safety Precautions:

Use proper equipment and assistance when moving, lifting, handling, or transporting membrane rolls to avoid personal injuries as well as damage to the membrane. Refer to the Product Safety Data Sheet for additional safety information.



Required Information for Ordering Custom Pitch Pan Fabrication

Color	
Pan Length Upper	
Pan Width Upper	
Pan Height	
Split (Y/N)	
Custom Membrane Target Flashing Size	
Quantity	
Special Instructions:	

Product details stated are nominal as manufactured, and the results of tests and/or calculations and therefore are non-binding and do not represent a guarantee or warranted characteristics. User and/or designer are responsible for confirming suitable performance for specific application and conforming with all applicable laws and regulations.

Application:

Refer to IB TPO Specifications and Construction Details for installation requirements and additional information for approved substrates and specific uses. IB TPO Pitch Pans are intended to be used in conjunction with M-1 Sealant (sold separately) and One-Part Pourable Penetration Sealant (sold separately), or IB Sealer (sold separately). IB TPO Pitch Pans must be secured in place over the installed membrane with IB Fasteners approved for the substrate type. Split pan seams must be sealed with a continuous bead of M-1 Sealant or IB Sealer and closed with pop-rivets spaced approximately 1" oc. (not supplied).

Refer to www.ibroof.com for additional installation instructions. Membranes must not be applied during adverse weather or without precautionary measures in temperatures below 40°F (4°C). All surfaces should be clean, dry, free of dirt, dust, debris, oils, soaps, coatings, and other contaminants that may inhibit bonding.

Go to <https://ibroof.com/tds> for the most up-to-date version of this document.

Toll Free: 800-426-1626

Care has been taken to ensure that the contents of this publication are accurate, however IB Roof Systems and any subsidiary companies do not accept responsibility for errors or for information that is found to be misleading. Suggestions for, or description of, the end use of application of products or methods of working, are for information only and IB Roof systems and any subsidiary accept no responsibility in respect thereof.