



Product Description:

IB TPO Penetration Curbs consists of a two-piece adjustable injection molded profiles used in conjunction with compatible pourable sealants to form a durable, waterproof seal around penetrations.

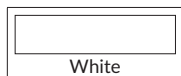
Use:

- For use around roof top penetrations such as pipe, conduit, gas lines, and other types of structural supports.
- Adjustable lengths range from 6" to 12".
- Smaller sizes may be achieved by cutting along vertical guidelines to remove excess material and heat-welding the joints together along both the vertical and horizontal overlaps.

Thickness:

60 mil

Available Colors:



Sizes:

6" l x 6" w x 2" h to 12" l x 6" w x 2" h

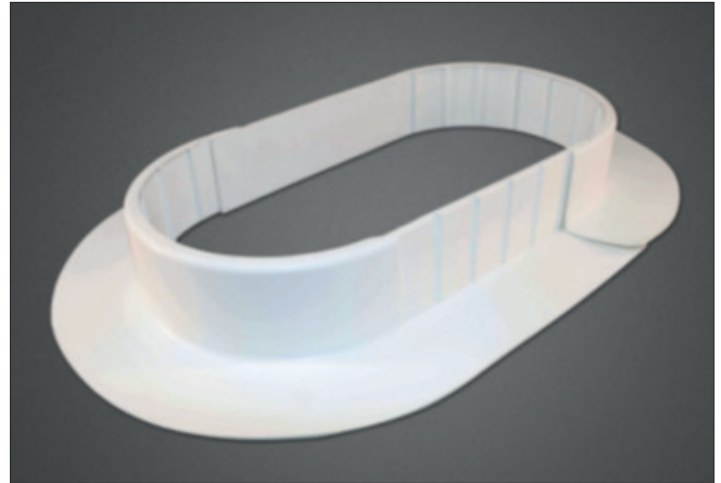
Packaging:

Each box contains six (6) curbs units.

Box weight = 7.2 lbs.

Application:

Refer to IB TPO Specifications and Construction Details for installation requirements and additional information for specific uses. Install at ambient temperatures of 40°F and rising. Prior to application, use the IB TPO Cleaner to ensure no oil, dirt, moisture, or other foreign materials are present on the receiving substrate. Before installation of the IB TPO Penetration Curbs, be sure to seal around the penetration to prevent the One-Part Pourable Sealer from potentially flowing into the roofing system or the building. Fit both pieces of the TPO Penetration Curb together around the penetration. If a smaller size is required, the penetration pocket may be cut along vertical guidelines to remove excess material. The remaining pieces must be heat-welded together along both the vertical and horizontal overlaps. Center the penetration curb around the penetration and weld the flange to the TPO membrane. After installation of the IB TPO Penetration Curb, use the IB TPO Primer to prime all surfaces where the



Product details stated are nominal as manufactured, and the results of tests and/or calculations and therefore are non-binding and do not represent a guarantee or warranted characteristics. User and/or designer are responsible for confirming suitable performance for specific application and conforming with all applicable laws and regulations.

One-Part Pourable Sealer will come in contact with. Allow the primer to flash off before applying the One-Part Pourable Sealer. Remove the cap from the One-Part Pourable Sealer and dispense into the penetration curb by rolling the pouch from back to front until the penetration pocket is filled at least 2" (50.8 mm). When resealing the pouch, ensure no air is trapped inside. One-Part Pourable Sealer is a moisture-curing formulation and timing to fully cure will vary based on ambient conditions.

Refer to www.ibroof.com for additional installation instructions. Membranes must not be applied during adverse weather or without precautionary measures in temperatures below 40°F (4°C). All surfaces should be clean, dry, free of dirt, dust, debris, oils, soaps, coatings, and other contaminants that may inhibit bonding.

Storage:

Store IB TPO Penetration Curbs indoors, out of direct sunlight, in original unopened containers and away from objects that could cause physical damage or create punctures as well as ignition sources. The membrane is flammable and will catch fire when exposed to open flame.

Safety Precautions:

Use proper equipment and assistance when moving, lifting, handling, or transporting membrane rolls to avoid personal injuries as well as damage to the membrane. Refer to the Product Safety Data Sheet for additional safety information.

Go to <https://ibroof.com/tds> for the most up-to-date version of this document.

Toll Free: 800-426-1626

Care has been taken to ensure that the contents of this publication are accurate, however IB Roof Systems and any subsidiary companies do not accept responsibility for errors or for information that is found to be misleading. Suggestions for, or description of, the end use of application of products or methods of working, are for information only and IB Roof systems and any subsidiary accept no responsibility in respect thereof.



Quality Products



Exceptional Service



Technical Expertise

IBroof.com

510910018 1/15/2026