



## Product Description:

The IB TPO Dryer / Exhaust Vent is a heavy-duty metal two-piece general-purpose roof exhaust vent consisting of a Kynar 500® finished vent hood with internal backdraft dampers shipped with a ready to install galvanized flanged metal base. Fits many common powered air exhaust duct and vent fan applications. IB Dryer / Exhaust Vent comes equipped with an integral clamping band for easy, quick installation over factory fabricated IB TPO No Cone Flashing. The vent hood can be removed as required for general maintenance or periodic cleaning.

## Features:

- Built-in backdraft dampers close vent opening when not in use
- Heavy 26-gauge galvanized metal construction
- Can be used for dryer, kitchen, and bath exhaust vent Applications
- Baffles and gaskets reduce cold air intrusion, condensation, and noise
- 4" under flange drop for easy connection to exhaust duct

## Thickness:

60 mil

## Available Colors:



\*Gray and tan are special order only

## Sizes/Packaging:

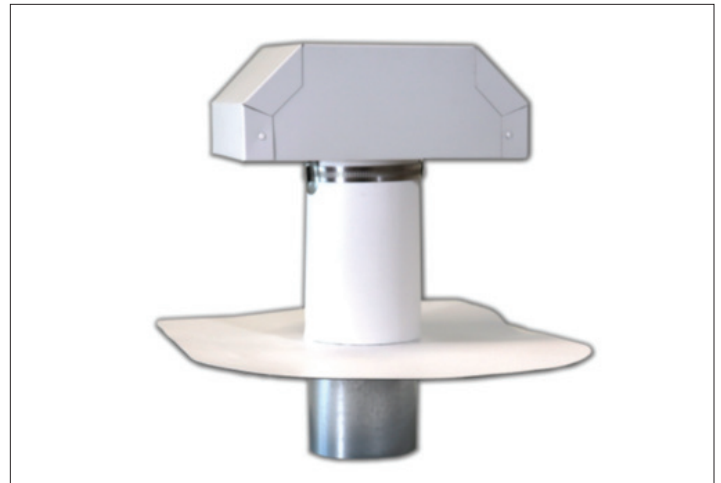
Size	Box Qty.	Box Wt.	Dimensions
4"	6	33 lbs.	24" x 24" x 20"
6"	4	30 lbs.	24" x 24" x 20"
8"	2	20 lbs.	24" x 24" x 20"
10"	1	10 lbs.	24" x 24" x 20"

## Storage:

Store indoors, out of direct sunlight, in original unopened containers and away from objects that could cause physical damage or create punctures as well as ignition sources. The membrane is flammable and will catch fire when exposed to open flame.

## Safety Precautions:

Use proper equipment and assistance when moving, lifting, handling, or transporting membrane rolls to avoid personal injuries as well as damage to the membrane. Refer to the Product Safety Data Sheet for additional safety information.



**Note: Not intended for use over plumbing vents, furnaces, chimneys, water heater or other gas-fired equipment, or roof ventilation purposes.**

Product details stated are nominal as manufactured, and the results of tests and/or calculations and therefore are non-binding and do not represent a guarantee or warranted characteristics. User and/or designer are responsible for confirming suitable performance for specific application and conforming with all applicable laws and regulations.

## Application:

Refer to IB TPO Specifications and Construction Details for installation requirements and additional information for specific uses. Place vent base into position.

1. Insert short side of sub-base stem into vent opening in roof substrate.
2. Attach sub-base flange to roof substrate using fasteners.
3. From below the roof deck, connect vent ducting to sub-base stem using hose clamp or HVAC tape (provided by others).
4. From above the roof deck, place TPO flashing over 8" tall portion of sub-base.
5. Completely weld TPO flange to existing eld membrane.
6. Place hood and hinged base assembly over the flashing and stem.
7. Tighten hose clamp collar until hood is secure. Apply duct tape where both pipes connect if necessary, to prevent any exhaust leakage.
8. Omit screen inserts if used in a dryer vent application to help prevent debris build-up.

Refer to [www.ibroof.com](http://www.ibroof.com) for additional installation instructions. Membranes must not be applied during adverse weather or without precautionary measures in temperatures below 40°F (4°C). All surfaces should be clean, dry, free of dirt, dust, debris, oils, soaps, coatings, and other contaminants that may inhibit bonding.

Go to <https://ibroof.com/tds> for the most up-to-date version of this document.

Toll Free: 800-426-1626

Care has been taken to ensure that the contents of this publication are accurate, however IB Roof Systems and any subsidiary companies do not accept responsibility for errors or for information that is found to be misleading. Suggestions for, or description of, the end use of application of products or methods of working, are for information only and IB Roof systems and any subsidiary accept no responsibility in respect thereof.