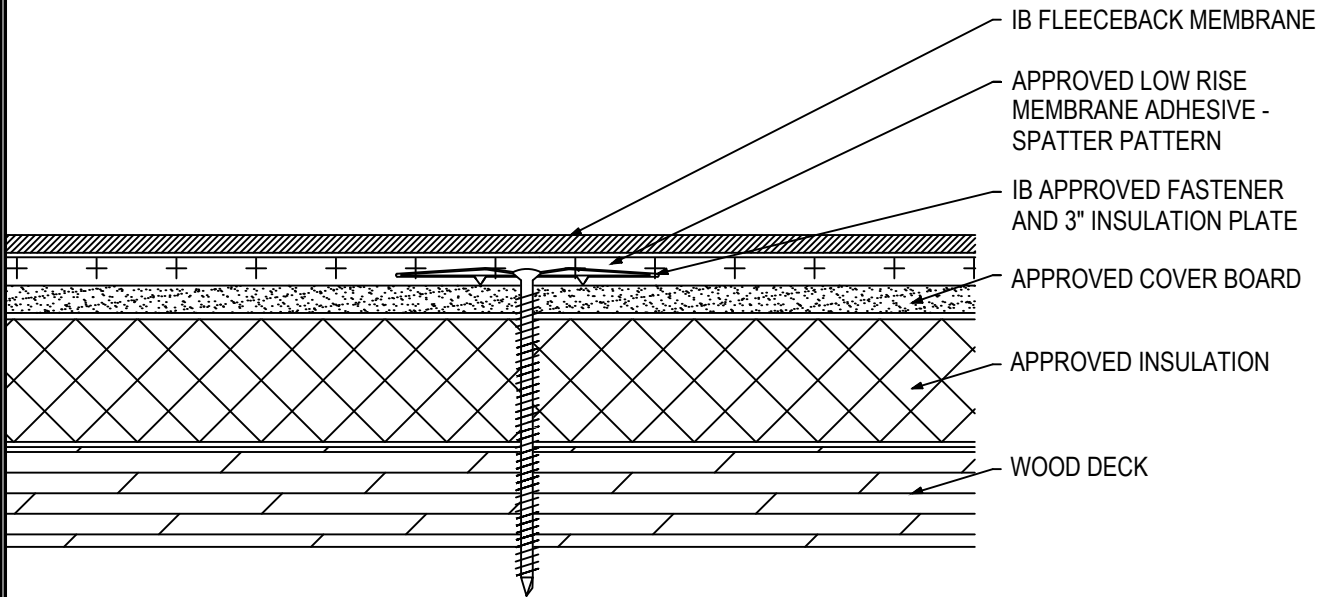


Fully Adhered Membrane (SP) - Cover Board (MA) - Insulation (MA) - Wood Deck (New or Tear-Off)


Fire Rating / Max. Slope	Deck Type	Insulation/Cover Board			IB Fleeceback Membrane Attachment	Max. Design Pressure**
		Type	Attachment	Fasteners		
<input type="checkbox"/> 'Class 'A' Unlimited	7/16" OSB	Min. Approved 1/4" Cover Board & Approved Insulation	16 per 4' x 8' (1 per 2 sq. ft.)	IB SD #12 or HD #14, IB 3" Insulation Plate	CR-20 Spatter Pattern 3.75 lbs/square	Minimum Req. for IB Warranty
<input type="checkbox"/> 'Class 'A' Unlimited	7/16" OSB	Min. Approved 1/2" Cover Board & Approved Insulation	12 per 4' x 8' (1 per 2.67 sq. ft.)	IB SD #12 or HD #14, IB 3" Insulation Plate	CR-20 Spatter Pattern 3.75 lbs/square	Minimum Req. for IB Warranty
<input type="checkbox"/> 'Class 'A' Unlimited	1/2" Plywood	Min. Approved 1/4" Cover Board & Approved Insulation	12 per 4' x 8' (1 per 2.67 sq. ft.)	IB SD #12 or HD #14, IB 3" Insulation Plate	CR-20 Spatter Pattern 3.75 lbs/square	Minimum Req. for IB Warranty
<input type="checkbox"/> 'Class 'A' Unlimited	1/2" Plywood	Min. Approved 1/2" Cover Board & Approved Insulation	10 per 4' x 8' (1 per 3.2 sq. ft.)	IB SD #12 or HD #14, IB 3" Insulation Plate	CR-20 Spatter Pattern 3.75 lbs/square	Minimum Req. for IB Warranty
<input type="checkbox"/> 'Class 'A' Unlimited	19/32" Plywood	Min. Approved 1/4" Cover Board & Approved Insulation	20 per 4' x 8' (1 per 1.6 sq. ft.)	IB SD #12 or HD #14, IB 3" Insulation Plate	CR-20 Spatter Pattern 3.75 lbs/square	-45.0 psf (Class 90)
<input type="checkbox"/> 'Class 'A' Unlimited	19/32" Plywood	Min. Approved 1/4" Cover Board & Approved Insulation	24 per 4' x 8' (1 per 1.3 sq. ft.)	IB XHD #15, IB 3" Insulation Plate	CR-20 Spatter Pattern 3.75 lbs/square	-75.0 psf (Class 150)

Approved Insulation: IB EnergyBoard II or III, or IB Approved UL Classified Polyisocyanurate, IB Approved UL Classified Expanded Polystyrene, IB Approved UL Classified Extruded Polystyrene Insulation

Approved Cover Board: DensDeck Prime, Securock Gypsum Fiber Board, minimum 1/4" thickness; or minimum 1/2" IB HD ISO; or minimum 1/2" thick Structodek HD Primed

Fire Classification Note(s): ¹UL Class 'A' up with unlimited slope when utilized with minimum 1/4" gypsum cover board listed above. ²UL Class 'A' up to 1/2":12" when utilized with minimum 1/2" IB HD ISO or H-Shield HD ISO. ³The use of other IB Approved Cover Boards may not achieve UL classification.

** Refer to Substrate Resistance table for required pull-out values.

For additional information about IB Roof Systems requirements, recommendations, installation details, approvals and limitations for the above assemblies, please refer to the latest edition of the IB Roof Systems Specifications Manual. For Technical Services please contact us at 800-426-1626.

Membranes:	Membrane Color:	Warranty Length***	Warranty Type***
<input type="checkbox"/> IB PVC Single-Ply FB 50 Mil	<input type="checkbox"/> White*	<input type="checkbox"/> 10 Year <input type="checkbox"/> 15 Year <input type="checkbox"/> 20 Year	<input type="checkbox"/> Total System - No Dollar Limit (NDL)
<input type="checkbox"/> IB PVC Single-Ply FB 60 Mil	<input type="checkbox"/> White*	<input type="checkbox"/> 15 Year <input type="checkbox"/> 20 Year <input type="checkbox"/> 25 Year	<input type="checkbox"/> Warranty Plus (WP)
<input type="checkbox"/> IB PVC Single-Ply FB 80 Mil	<input type="checkbox"/> White*	<input type="checkbox"/> 20 Year <input type="checkbox"/> 25 Year <input type="checkbox"/> 30 Year	<input type="checkbox"/> Commercial Limited Material Warranty (CLMW)
			<input type="checkbox"/> Residential Limited Material Warranty (RLMW)

* Meets CRRC, Title-24, & EnergyStar Standards

*** Refer to Warranty Selection Guide for Warranty Riders, Term Length Limitations, and eligibility requirements of the Warranty Program

Submitted By: Address: Email:	Project Name: Address:
--	---