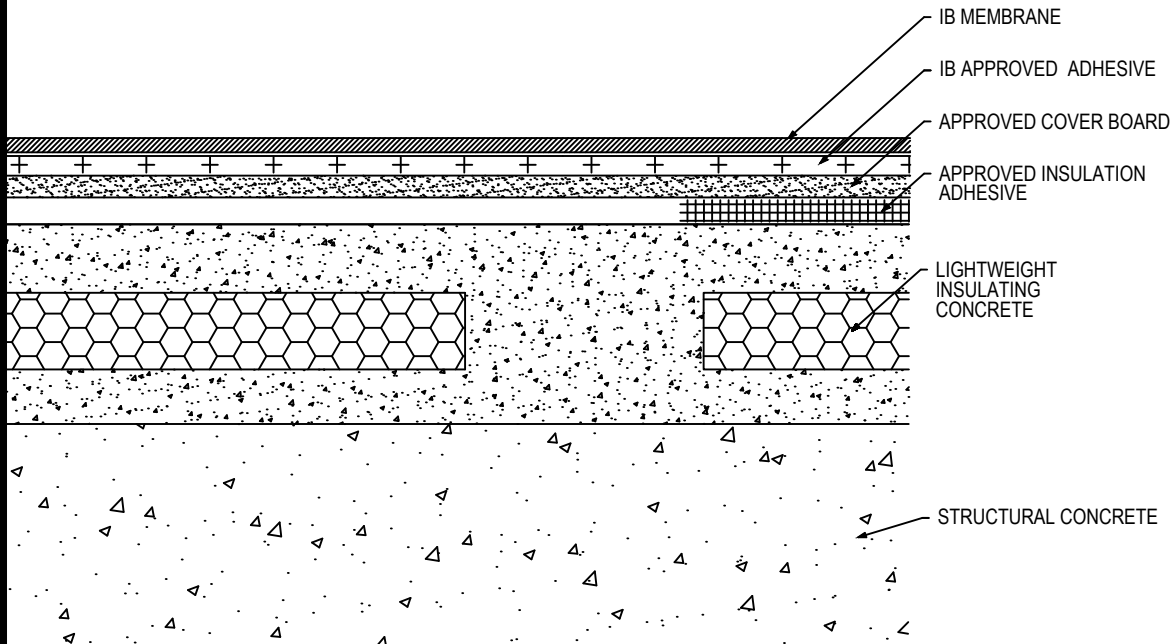


## Fully Adhered Membrane - Cover Board (RB) - LWIC Deck (Tear-Off)



Fire Rating / Max. Slope		Deck Type		Cover Board			IB Membrane Attachment	Max. Design Pressure**
		Sub-Deck	LWIC	Type	Insulation Adhesive	Pattern		
<input type="checkbox"/>	1Class "A" Unlimited	Structural Concrete	Lightweight Concrete	Approved Cover Board	BM, CR20, OB500, OSFA, PG1, or RSIA	Four continuous ribbons, 12" o.c.	IB Approved Adhesive	Minimum Req. for IB Warranty
<input type="checkbox"/>	1Class "A" Unlimited	Structural Concrete	Min 200 psi, 2" thick, Celcore	1/4" DensDeck Prime or 1/4" Securock Gypsum Fiber Board	CR20	Four continuous ribbons, 12" o.c.	IB Approved Adhesive	-222.5 psf (Class 445)
<input type="checkbox"/>	1Class "A" Unlimited	Structural Concrete	Min 200 psi, 2" thick, Elastizell	1/4" DensDeck Prime or 1/4" Securock Gypsum Fiber Board	CR20	Four continuous ribbons, 12" o.c.	IB Approved Adhesive	-180.0 psf (Class 360)
<input type="checkbox"/>	1Class "A" Unlimited	Structural Concrete	Min 200 psi, 2" thick, Elastizell	1/4" DensDeck Prime or 1/4" Securock Gypsum Fiber Board	OB500	Four continuous ribbons, 12" o.c.	IB Approved Adhesive	-225.0 psf (Class 500)
<input type="checkbox"/>	1Class "A" Unlimited	Structural Concrete	Min 200 psi, 2" thick, Mearlcrete	1/4" DensDeck Prime or 1/4" Securock Gypsum Fiber Board	CR20	Four continuous ribbons, 12" o.c.	IB Approved Adhesive	-240.0 psf (Class 480)

**Approved Lightweight Concrete:** Celcore = Min. 200 psi, min. 2" thick Celcore Cellular Concrete over Structural Concrete, Elastizell = Min 200 psi, min 2" thick Elastizell Lightweight Insulating Concrete over Structural Concrete, Mearlcrete = Min 200 psi, min. 2" thick Mearlcrete over Structural Concrete.

**Approved Cover Board:** DensDeck Prime, DexCell FA Glass Mat Roof Board, Securock Coated Glass Mat Roof Board, Securock Gypsum Fiber Board, minimum 1/4" thickness; 7/16" DexCell Cement Board, or minimum 1/2" IB HD ISO; or minimum 1/2" thick Structodek HD Primed.

**Approved Insulation Adhesive:** BM = Polyset BoardMax, CR-20 = Polyset CR-20, OB500 = OlyBond 500 Adhesive Fastener, OSFA = Millennium One-Step Foamable Adhesive; PG-1 = Millennium PG-1 Pump Grade Adhesive; or RSIA = IB Rapid Set Insulation Adhesive; maximum bead spacing 12" o.c.

**Fire Classification Note(s):** 1UL Class 'A' with unlimited slope when utilized with any of the following gypsum cover boards: minimum 1/4" Securock Coated Glass Mat Roof Board, or DexCell FA Glass Mat Roof Board and membrane adhered using IB Vertibond 432 Bonding Adhesive. 2UL Class 'A' up to 3":12" when utilized with 1/2" Securock Gypsum-Fiber Roof Board and membrane adhered using IB Vertibond 432 Bonding Adhesive. 3UL Class 'A' up to 1/2":12" when utilized with minimum 1/2" IB HD ISO or H-Shield HD ISO. 4The use of other IB Approved Cover Boards may not achieve UL classification.

\*\* Refer to Substrate Resistance table for required pull-out values.

For additional information about IB Roof Systems requirements, recommendations, installation details, approvals and limitations for the above assemblies, please refer to the latest edition of the IB Roof Systems Specifications Manual. For Technical Services please contact us at 800-426-1626.

Membranes:	Membrane Color:	Warranty Length***	Warranty Type***
<input type="checkbox"/> IB PVC Single-Ply 50 Mil	<input type="checkbox"/> White* <input type="checkbox"/> Gray <input type="checkbox"/> Tan <input type="checkbox"/> Bronze <input type="checkbox"/> ChemGuard*	<input type="checkbox"/> 10 Year <input type="checkbox"/> 15 Year <input type="checkbox"/> 20 Year	<input type="checkbox"/> Total System - No Dollar Limit (NDL)
<input type="checkbox"/> IB PVC Single-Ply 60 Mil	<input type="checkbox"/> White* <input type="checkbox"/> Cool Sand* <input type="checkbox"/> Cool Stone* <input type="checkbox"/> Gray <input type="checkbox"/> Tan	<input type="checkbox"/> 15 Year <input type="checkbox"/> 20 Year <input type="checkbox"/> 25 Year	<input type="checkbox"/> Warranty Plus (WP)
<input type="checkbox"/> IB PVC Single-Ply 80 Mil	<input type="checkbox"/> White* <input type="checkbox"/> Gray <input type="checkbox"/> Tan <input type="checkbox"/> Bronze <input type="checkbox"/> ChemGuard*	<input type="checkbox"/> 20 Year <input type="checkbox"/> 25 Year <input type="checkbox"/> 30 Year	<input type="checkbox"/> Commercial Limited Material Warranty (CLMW)
			<input type="checkbox"/> Residential Limited Material Warranty (RLMW)

\* Meets CRRC, Title-24, & EnergyStar Standards

\*\*\* Refer to Warranty Selection Guide for Warranty Riders, Term Length Limitations, and eligibility requirements of the Warranty Program

Submitted By:  
Address:  
Email:

Project Name:  
Address: