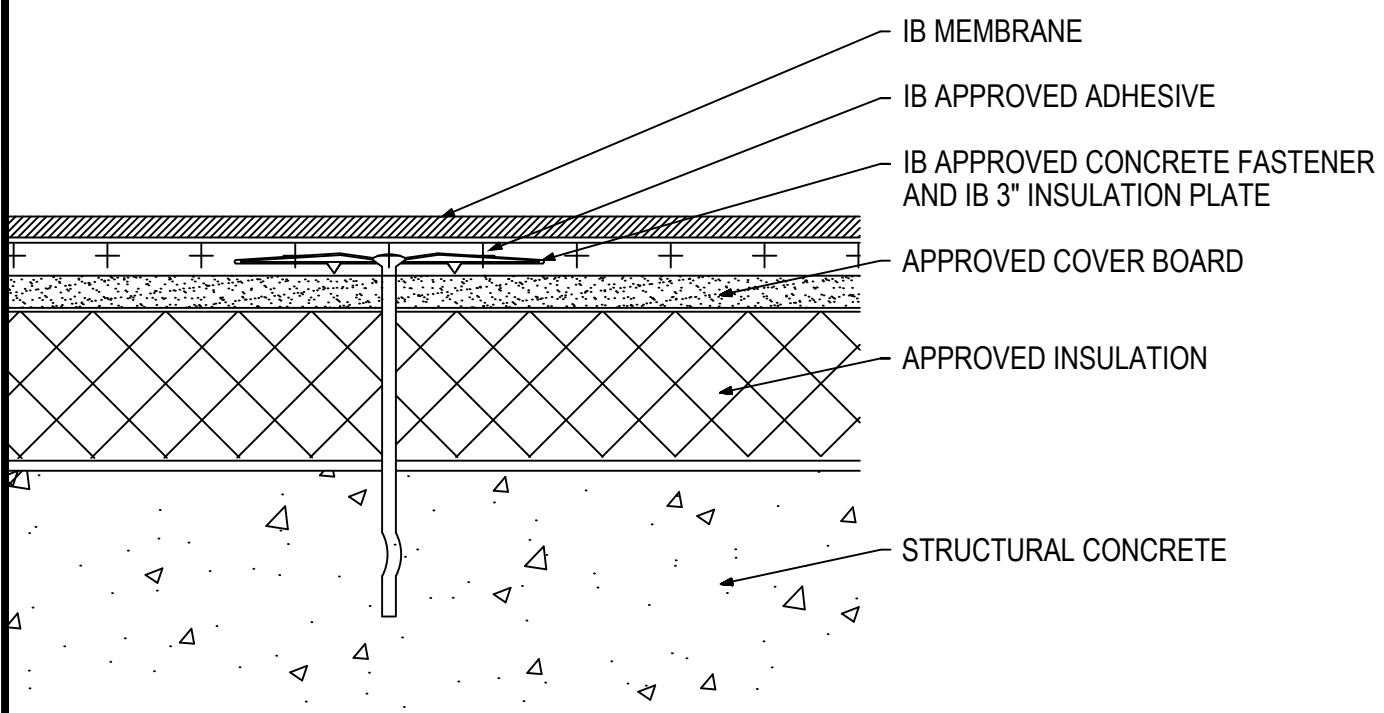


Fully Adhered Membrane - Cover Board (MA) - Insulation (MA) - Concrete Deck (New or Tear-Off)



Fire Rating / Max. Slope	Deck Type	Insulation/Cover Board			IB Membrane Attachment	Max. Design Pressure**
		Type	Attachment	Fasteners		
<input type="checkbox"/> 'Class 'A' Unlimited	Structural Concrete	Min. 1.5" Approved Insulation & min. 1/4" Cover Board	10 per 4' x 8' (1 per 3.2 sq. ft.)	IB HD #14, CD-10 or DekSpike, IB 3" Insulation Plate	IB Approved Adhesive	-30.0 psf (Class 60)
<input type="checkbox"/> 'Class 'A' Unlimited	Structural Concrete	Min. 1.5" Approved Insulation & min. 1/4" Cover Board	10 per 4' x 8' (1 per 3.2 sq. ft.)	IB HD #14, CD-10 or DekSpike, IB 3" Insulation Plate	IB Approved Adhesive	-30.0 psf (Class 60)
<input type="checkbox"/> 'Class 'A' Unlimited	Structural Concrete	Min. 1.5" Approved Insulation & min. 1/4" Cover Board	8 per 4' x 8' (1 per 4.0 sq. ft.)	IB HD #14, CD-10 or DekSpike, IB 3" Insulation Plate	IB Approved Adhesive	-45.0 psf (Class 90)
<input type="checkbox"/> 'Class 'A' Unlimited	Structural Concrete	Min. 2" Approved Insulation & min. 1/4" Cover Board	16 per 4' x 8' (1 per 2.0 sq. ft.)	IB HD #14, CD-10 or DekSpike, IB 3" Insulation Plate	IB Approved Adhesive	-45.0 psf (Class 90)
<input type="checkbox"/> 'Class 'A' Unlimited	Structural Concrete	Min. 1.5" Approved Insulation & min. 1/4" Cover Board	24 per 4' x 8' (1 per 1.3 sq. ft.)	IB HD #14, CD-10 or DekSpike, IB 3" Insulation Plate	IB Approved Adhesive	-75.0 psf (Class 150)

Approved Insulation: Minimum 1-inch thickness - IB EnergyBoard II or III, H-Shield or H-Shield CG; or IB Approved UL Classified Polyisocyanurate, IB Approved UL Classified Expanded Polystyrene, IB Approved UL Classified Extruded Polystyrene Insulation

Approved Cover Board: DensDeck Prime, Securock Ultralight Coated Glass-Mat Roof Board, Securock Gypsum Fiber Board, DexCell FA Glass Mat Roof Board, minimum 1/4" thickness; or minimum 7/16-in. thick DexCell Cement Board or minimum 1/2" IB HD ISO; or minimum 1/2" thick Structodek HD Primed

Fire Classification Note(s): ¹UL Class 'A' up to unlimited slope when utilized with any UL Classified insulation, any thickness and minimum 1/4" DensDeck Prime, Securock Ultralight Coated Glass-Mat Roof Board, or DexCell FA Glass Mat Roof Board, or minimum 7/16-in. thick DexCell Cement Board, mechanically attached and membrane adhered with IB Vertibond 432 Bonding Adhesive at 1-gal/60-ft² or IB Water Borne 636 Adhesive at 1-gal/140-ft²

²UL Class 'A' up to 1/2":12" when utilized with minimum 1/2" IB HD ISO or H-Shield HD ISO.³The use of other IB Approved Cover Boards may not achieve UL classification.

** Refer to Substrate Resistance table for required pull-out values.

For additional information about IB Roof Systems requirements, recommendations, installation details, approvals and limitations for the above assemblies, please refer to the latest edition of the IB Roof Systems Specifications Manual. For Technical Services please contact us at 800-426-1626.

Membranes:	Membrane Color:	Warranty Length***	Warranty Type***
<input type="checkbox"/> IB PVC Single-Ply 50 Mil	<input type="checkbox"/> White* <input type="checkbox"/> Gray <input type="checkbox"/> Tan <input type="checkbox"/> Bronze <input type="checkbox"/> ChemGuard*	<input type="checkbox"/> 10 Year <input type="checkbox"/> 15 Year <input type="checkbox"/> 20 Year	<input type="checkbox"/> Total System - No Dollar Limit (NDL)
<input type="checkbox"/> IB PVC Single-Ply 60 Mil	<input type="checkbox"/> White* <input type="checkbox"/> Cool Sand* <input type="checkbox"/> Cool Stone* <input type="checkbox"/> Gray <input type="checkbox"/> Tan	<input type="checkbox"/> 15 Year <input type="checkbox"/> 20 Year <input type="checkbox"/> 25 Year	<input type="checkbox"/> Warranty Plus (WP)
<input type="checkbox"/> IB PVC Single-Ply 80 Mil	<input type="checkbox"/> White* <input type="checkbox"/> Gray <input type="checkbox"/> Tan <input type="checkbox"/> Bronze <input type="checkbox"/> ChemGuard*	<input type="checkbox"/> 20 Year <input type="checkbox"/> 25 Year <input type="checkbox"/> 30 Year	<input type="checkbox"/> Commercial Limited Material Warranty (CLMW)
			<input type="checkbox"/> Residential Limited Material Warranty (RLMW)

* Meets CRRC, Title-24, & EnergyStar Standards

*** Refer to Warranty Selection Guide for Warranty Riders, Term Length Limitations, and eligibility requirements of the Warranty Program

Submitted By:

Address:

Email:

Project Name:

Address: