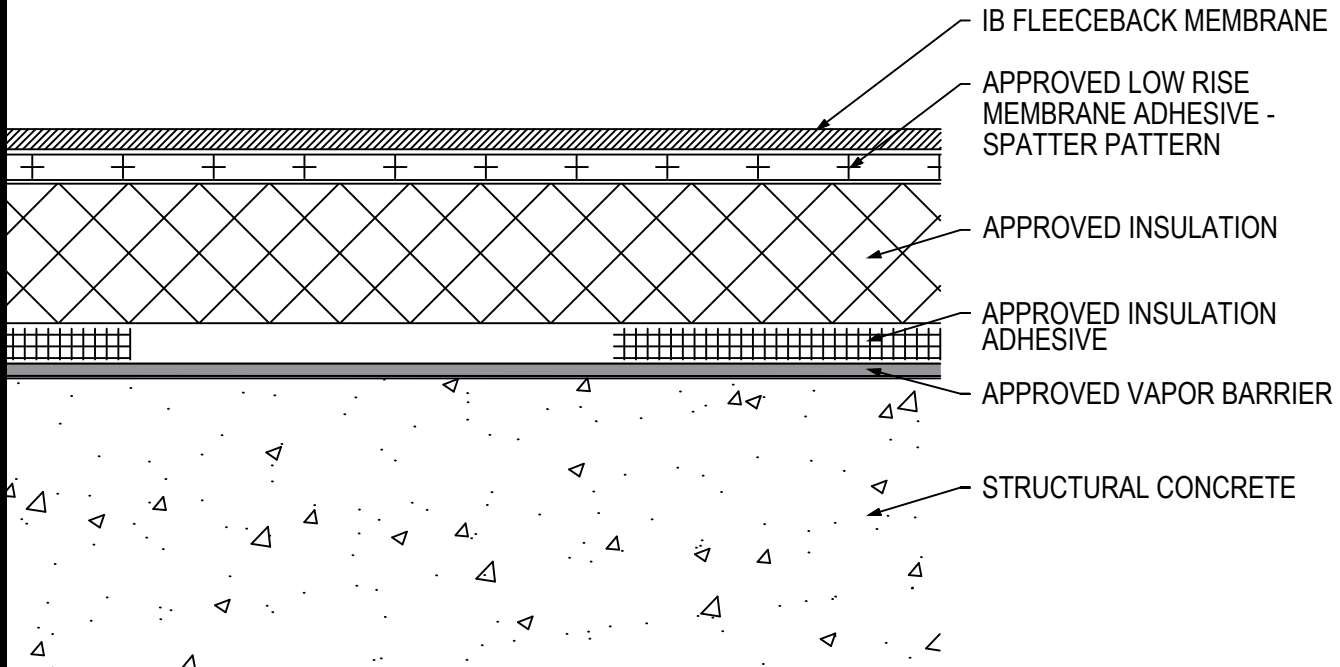


## Fully Adhered Membrane (SP) - Insulation (RB) - Vapor Barrier - Concrete Deck (New or Tear Off)



Fire Rating / Max. Slope	Deck Type	Insulation/Vapor Barrier			IB Fleeceback Membrane Attachment	Max. Design Pressure**
		Type	Insulation Adhesive	Pattern		
<input type="checkbox"/> 'Class 'A' Unlimited	Structural Concrete	1" Approved Insulation	BM, CR20	Four continuous ribbons, 12" o.c.	CR-20 Spatter Pattern 3.75 lbs/square	Minimum Req for Warranty
<input type="checkbox"/> 'Class 'A' Unlimited	Structural Concrete	1" Approved Insulation	OB500	Four continuous ribbons, 12" o.c.	CR-20 Spatter Pattern 3.75 lbs/square	-307.5 psf (Class 615)
<input type="checkbox"/> 'Class 'A' Unlimited	Structural Concrete	1" Approved Insulation	OSFA, PG1, or RSIA	Four continuous ribbons, 12" o.c.	CR-20 Spatter Pattern 3.75 lbs/square	-327.5 psf (Class 655)

**Approved Vapor Barrier:** IBBarrier SA Membrane, SopraVap'r SA, applied using self-adhesive techniques

**Approved Insulation:** IB EnergyBoard II or III, AC Foam II or AC Foam III, H-Shield or H-Shield CG, or IB Approved UL Classified Polyisocyanurate

**Approved Insulation Adhesive:** BM = Polyset BoardMax, CR-20 = Polyset CR-20, OB500 = OlyBond 500 Adhesive Fastener, OSFA = Millennium One-Step Foamable Adhesive; PG-1 = Millennium PG-1 Pump Grade Adhesive; or RSIA = IB Rapid Set Insulation Adhesive; maximum bead spacing 12" o.c.

**Fire Classification Note(s):** <sup>1</sup>UL Class 'A' up with unlimited slope when utilized with any of the following IB Approved ISO insulations: IB Energy Board II, IB Energy Board III, AC Foam II, or AC Foam III, any thickness adhered with any UL Classified insulation adhesive. <sup>2</sup>UL Class 'A' up to 1/4":12" when utilized with minimum 1" thickness H-Shield CG. <sup>3</sup>UL Class 'C' Classification with an unlimited slope when utilized with minimum 1" thickness H-Shield ISO.

<sup>4</sup>Other IB Approved Insulations or lesser thicknesses may not achieve UL Classification.

\*\* Refer to Substrate Resistance table for required pull-out values.

For additional information about IB Roof Systems requirements, recommendations, installation details, approvals and limitations for the above assemblies, please refer to the latest edition of the IB Roof Systems Specifications Manual. For Technical Services please contact us at 800-426-1626.

Membranes:	Membrane Color:	Warranty Length***	Warranty Type***
<input type="checkbox"/> IB PVC Single-Ply FB 50 Mil	<input type="checkbox"/> White*	<input type="checkbox"/> 10 Year <input type="checkbox"/> 15 Year <input type="checkbox"/> 20 Year	<input type="checkbox"/> Total System - No Dollar Limit (NDL)
<input type="checkbox"/> IB PVC Single-Ply FB 60 Mil	<input type="checkbox"/> White*	<input type="checkbox"/> 15 Year <input type="checkbox"/> 20 Year <input type="checkbox"/> 25 Year	<input type="checkbox"/> Warranty Plus (WP)
<input type="checkbox"/> IB PVC Single-Ply FB 80 Mil	<input type="checkbox"/> White*	<input type="checkbox"/> 20 Year <input type="checkbox"/> 25 Year <input type="checkbox"/> 30 Year	<input type="checkbox"/> Commercial Limited Material Warranty (CLMW)
			<input type="checkbox"/> Residential Limited Material Warranty (RLMW)

\* Meets CRRC, Title-24, & EnergyStar Standards

\*\*\* Refer to Warranty Selection Guide for Warranty Riders, Term Length Limitations, and eligibility requirements of the Warranty Program

Submitted By:

Address:

Email:

Project Name:

Address: